

The quantitative assessment of the secreted immunoglobulin G repertoire after recall to evaluate the quality of immunizations¹

Running title: Quantitative assessment of the secreted IgG-repertoire

Klaus Eyer*†, Carlos Castrillon‡§¶, Guilhem Chenon*, Jérôme Bibette*, Pierre Bruhns‡, Andrew D. Griffiths§, Jean Baudry*

* ‘Laboratoire Colloïdes et Matériaux Divisés’ (LCMD), ESPCI Paris, PSL Research University, CNRS UMR8231 Chimie Biologie Innovation, F-75005 Paris, France.

† Laboratory for Functional Immune Repertoire Analysis, Institute of Pharmaceutical Sciences, D-CHAB, ETH Zürich, Zürich.

‡ Unit of Antibodies in Therapy and Pathology, Institute Pasteur, UMR1222 INSERM, F-75015 Paris, France.

§ ‘Laboratoire de Biochimie’ (LBC), ESPCI Paris, PSL Research University, CNRS UMR8231 Chimie Biologie Innovation, F-75005 Paris, France.

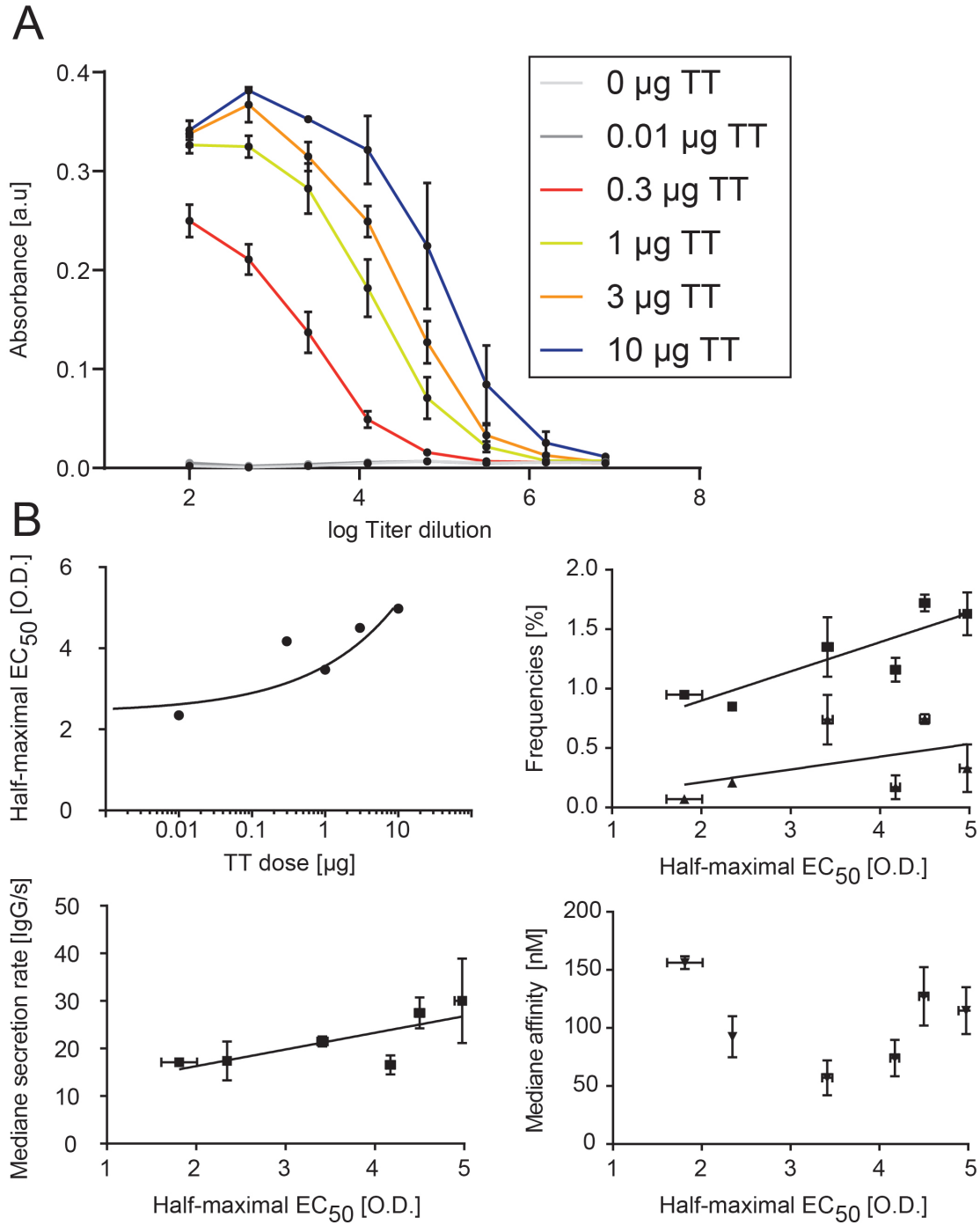
¶ Sorbonne Université, Collège doctoral, F-75005 Paris, France

Corresponding author: Prof. Dr. Eyer Klaus. klaus.eyer@pharma.ethz.ch

¹ E.K. acknowledges generous funding from the ‘The Branco Weiss Fellowship – Society in Science’ and received funding from the European Research Council (ERC) under the European Union’s Horizon 2020 research and innovation program (Grant agreement No. 80336). This work has further received the support of the "Institute Pierre-Gilles de Gennes" through the "laboratoire d'excellence", “Investissements d’avenir” programs ANR-10-IDEX-0001-02 PSL, ANR-10- EQPX-34 and ANR-10-LABX-31, and the European Research Council (ERC)–Seventh Framework Program (ERC-2013-CoG 616050 to P.B.). C.C. acknowledges financial support from CONCYTEC, Peru.

Table 1. Number of cells analyzed per condition.

Condition	n IgG-SCs	n TT IgG-SCs
1 week primary	574	101
2 week primary	1725	576
4 week primary	2067	635
8 week primary	1067	298
TT dose 0 µg	779	86
TT dose 0.01 µg	243	104
TT dose 0.1 µg	371	153
TT dose 0.3 µg	470	71
TT dose 1 µg	1287	866
TT dose 10 µg	2067	635



SI Figure 1: Titer measurements for CFA/IFA immunizations, and its correlation with various parameters. A) Titer was measured for all animals that were analyzed 24h after antigen. Data is shown here, where the standard deviation depicts the mouse-to-mouse variation (n=3 for each point). B) Correlation of half-maximal ED_{50} with various parameters, such as dose (left, up), the frequencies of Ig-SCs and antigen-affine IgG-SCs (right, up), median secretion rates (left, bottom) and median affinity (bottom, right) extracted using DropMap. Data points represent the mean value over the mouse triplicate for each condition.