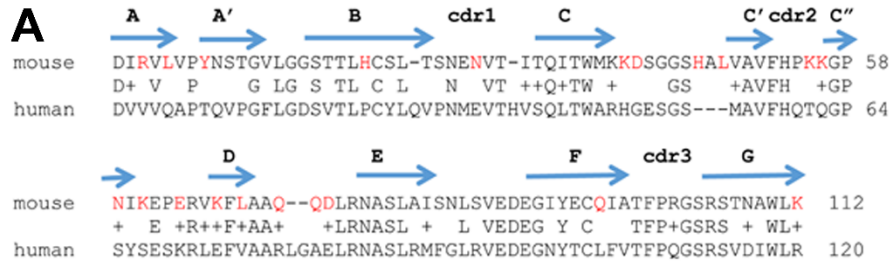


## Supplementary figures

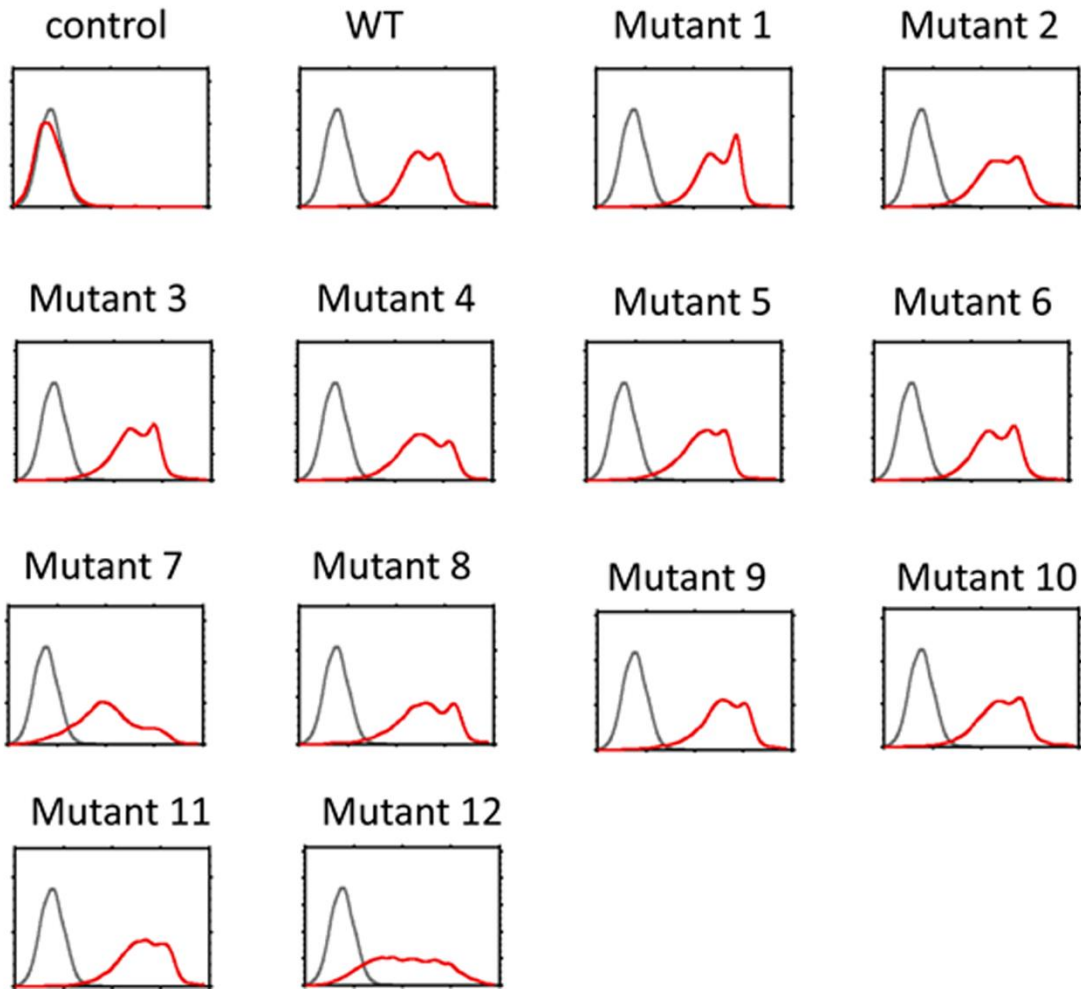


## B

List of mCD155 surface mutations

	Mutations	Secondary structure
1.	R <sup>31</sup> VL → VVQ	A
2.	Y36 → T	A'
3.	H49 → P	B
4.	N57 → E	CDR1
5.	K <sup>68</sup> D → HG	CC'-loop
6.	H <sup>74</sup> AL → AAA	CC'-loop
7.	K <sup>83</sup> K → TQ	CDR2
8.	N <sup>87</sup> IK → SIS	C''
9.	E92 → K	C''D-loop
10.	K <sup>95</sup> FL → EFV	D
11.	Q <sup>100</sup> QD → RLGAE	DE-loop
12.	Q124 → L	F

**Supplementary figure S1.** (A) Sequence alignment of human and mouse CD155 with structural beta-strands indicated in the first Ig domain. Non-conserved residues are highlighted in red. (B) 12 patch mutation sites on mouse CD155 according to the corresponding residues of human CD155 were spread on different secondary structures of the first Ig domain.



**Supplementary figure S2.** Surface expressions of wild type and mutant CD155 (red) by flow cytometry on transfected 293T cells. Isotype control is shown in gray.