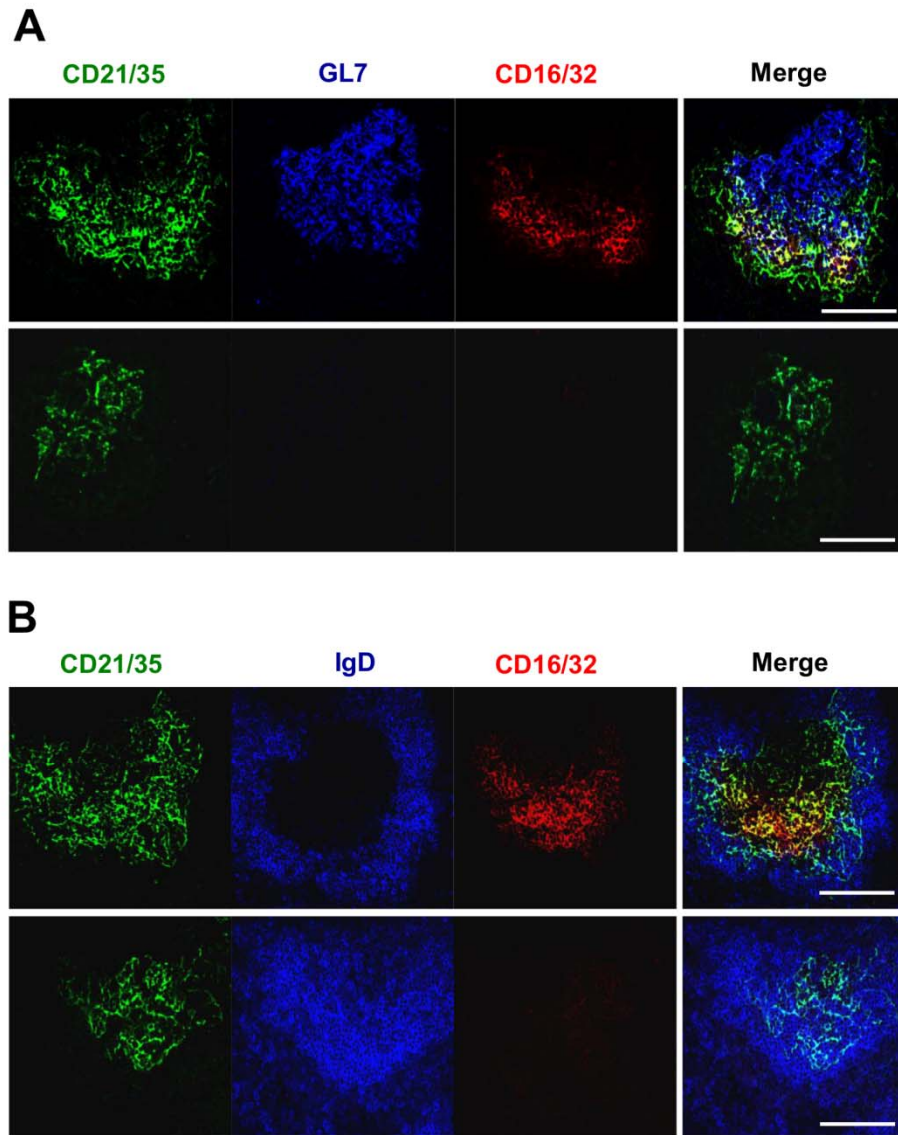


**Supplementary Figure 1.**

Confocal microscopy analysis to detect FDCs (CD21/35), SCSMs (CD169) and PE of one LN out of three from the experiment reported in figure 3C (upper panel). Signals which localize CD21/35 or CD169 expression and PE are shown separately or merged as indicated. The image of one section is shown, in each panel, as example of consecutive sections of a whole LN. Blow up: 5X. Scale bar: 100  $\mu\text{m}$ .



**Supplementary Figure 2.**

A, B. Mice were immunized i.m. three times with 10  $\mu$ g of Rrgb protein from *S. Pneumoniae* pilus in presence or absence of MF59. 10 d after the third immunization, inguinal draining LNs were collected and analyzed by confocal microscopy to detect FDCs (CD21/35) or Fc $\gamma$ RII/III (CD16/32) expression and GC formation through the up-regulation of GL7 (A) and down-regulation of IgD (B). Signals which localize CD21/35, CD16/32 and GL7 or IgD expression are shown separately or merged as indicated.

Sequential LN sections, differentially labeled, are reported in order to show the complementary up-regulation of GL7 or down-regulation of IgD. The image of one section is shown, in each panel, as example of consecutive sections of a whole LN. Images reported here are representative of follicles within LNs from several mice. Blow up: 40X. Scale bar: 100  $\mu$ m.