

## Supplemental Figure Legends

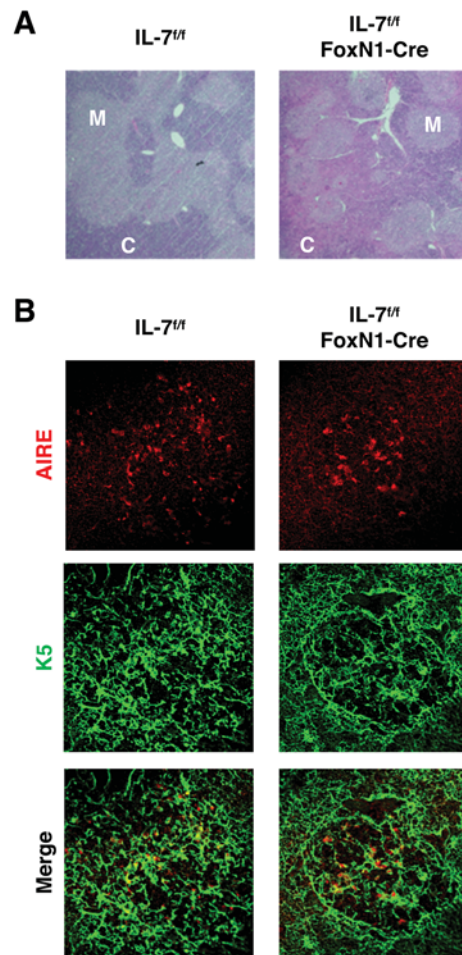
**Supplemental Figure S1.** Thymic architecture of IL-7<sup>fl/fl</sup> FoxN1-Cre mice.

(A) Histological analysis of the thymus from 4-week-old IL-7<sup>fl/fl</sup> and IL-7<sup>fl/fl</sup> FoxN1-Cre littermate mice. Thymus sections were stained with hematoxylin and eosin. C, cortex; M, medulla. (B) AIRE expression in the thymus. mTECs were stained with anti-AIRE and anti-K5 Abs. The data represent two independent experiments with similar results.

**Supplemental Figure S2.** T cells are partially recovered in spleen of IL-7<sup>fl/fl</sup> FoxN1-Cre mice.

(A) Flow cytometric analysis of spleen cells isolated from 4-week-old IL-7<sup>fl/fl</sup> and IL-7<sup>fl/fl</sup> FoxN1-Cre littermate mice. The data represent four to seven independent experiments with similar results. (B) Absolute numbers of total spleen and indicated cells. Values are the mean  $\pm$  S.E. of four to seven mice. (C) Flow cytometric analysis of CD44 and CD62L. The data represent five independent experiments with similar results. (D) The percentage of naïve (CD44<sup>-</sup>CD62L<sup>+</sup>), memory (CD44<sup>+</sup>CD62L<sup>+</sup>) and activated (CD44<sup>+</sup>CD62L<sup>-</sup>) phenotypes of CD4 and CD8 T cells. Values are the mean  $\pm$  S.E. of four mice. \*,  $p < 0.05$ ; \*\*,  $p < 0.01$ ; \*\*\*,  $p < 0.001$ .

**Fig. S1**



**Fig. S2**

