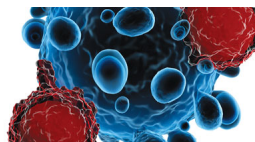


**SONY**

**Accelerating discovery**

Delivering innovation to transform your discoveries and advance human health



Learn more

#CYTO2022



**208 (11)**

*J Immunol* 2022; 208:2445-2593; ;  
<http://www.jimmunol.org/content/208/11>

This information is current as of June 25, 2022.

**Why *The JI*? [Submit online.](#)**

- **Rapid Reviews! 30 days\*** from submission to initial decision
- **No Triage!** Every submission reviewed by practicing scientists
- **Fast Publication!** 4 weeks from acceptance to publication

*\*average*

**Subscription** Information about subscribing to *The Journal of Immunology* is online at:  
<http://jimmunol.org/subscription>

**Permissions** Submit copyright permission requests at:  
<http://www.aai.org/About/Publications/JI/copyright.html>

**Email Alerts** Receive free email-alerts when new articles cite this article. Sign up at:  
<http://jimmunol.org/alerts>

*The Journal of Immunology* is published twice each month by  
The American Association of Immunologists, Inc.,  
1451 Rockville Pike, Suite 650, Rockville, MD 20852  
All rights reserved.  
Print ISSN: 0022-1767 Online ISSN: 1550-6606.



## PRESIDENT'S ADDRESS

- 2445 The All-Encompassing Importance of Innate Immunity  
*Jenny P.-Y. Ting*
- 2450 The Regulation of Immunity  
*Jeremy M. Boss*

## TOP READS

- 2457 **Immunotherapy for Lupus Nephritis** *See article p. 2467*  
**Anti-Idiotypic Abs Keep Autoantibodies in Check** *See article p. 2497*  
**High-Cholesterol Diet Exacerbates Flu** *See article p. 2523*  
**ATM Kinase Diversifies the TCR $\beta$  Repertoire** *See article p. 2583*

## PILLARS OF IMMUNOLOGY

- 2459 CCR5: The Receptor That Unlocks the Door for HIV Entry into Cells  
*Derya Unutmaz*

## CUTTING EDGE

- 2461 Cutting Edge: T Cell Responses to B.1.1.529 (Omicron) SARS-CoV-2 Variant Induced by COVID-19 Infection and/or mRNA Vaccination Are Largely Preserved  
*Mladen Jergović, Christopher P. Coplen, Jennifer L. Uhrlaub, Shawn C. Beitel, Jefferey L. Burgess, Karen Lutrick, Katherine D. Ellingson, Makiko Watanabe, and Janko Nikolic-Žugich*

## AUTOIMMUNITY

- 2467 Restoration of Follicular T Regulatory/Helper Cell Balance by OX40L–JAG1 Cotreatment Suppresses Lupus Nephritis in NZBWF1/j Mice  
*Prabhakaran Kumar, Sivasangari Balakrishnan, Swarali Surendra Lele, Suman Setty, Shaurya Dhingra, Alan L. Epstein, and Bellur S. Prabhakar*

On the cover: A composite image showing multiplexed immunohistochemical staining of seven complement proteins simultaneously from the knee joint synovial biopsy of an early rheumatoid arthritis patient. Color coding key is as follows: C3c, red; CFB, pink; CFH, cyan; CFHR4, magenta; MBL2, green; FCN3, white; C5b-9 (MAC), yellow. Banda, N. K., K. D. Deane, E. A. Bemis, C. Strickland, J. Seifert, K. Jordan, K. Goldman, Accelerating Medicines Partnership (AMP) RA/SLE Network, B. P. Morgan, L. W. Moreland, M. J. Lewis, C. Pitzalis, and V. M. Holers. 2022. Analysis of complement gene expression, clinical associations, and biodistribution of complement proteins in the synovium of early rheumatoid arthritis patients reveals unique pathophysiologic features. *J. Immunol.* 208: 2482–2496.

*The Journal of Immunology* (ISSN 0022-1767) is published twice each month by The American Association of Immunologists, Inc., 1451 Rockville Pike, Suite 650, Rockville, MD 20852, Phone: 301-634-7197, Fax: 301-246-8401. Subscription terms: New subscriptions and renewals begin January 1 and expire one year later (see <http://www.jimmunol.org/subscription> for prices and details). A special rate is available to members of The American Association of Immunologists, Inc. (see <http://www.aai.org/membership>). The American Association of Immunologists, Inc., is not responsible for undeliverable issues. Replacement issues can be obtained, if available, at the regular price of single issues (see <http://www.jimmunol.org/Subscription/Claims>). Reprints of individual articles are available only from authors. Periodicals postage paid at Rockville, MD 20852, and at additional mailing offices. Country of origin U.S.A. Printed on acid-free recyclable paper. Postmaster: Send address changes 60 days in advance to *The Journal of Immunology*, Subscription Department, 1451 Rockville Pike, Suite 650, Rockville, MD 20852. Copyright © 2022 by The American Association of Immunologists, Inc.



## CLINICAL AND HUMAN IMMUNOLOGY

- 2482 Analysis of Complement Gene Expression, Clinical Associations, and Biodistribution of Complement Proteins in the Synovium of Early Rheumatoid Arthritis Patients Reveals Unique Pathophysiologic Features  
*Nirmal K. Banda, Kevin D. Deane, Elizabeth A. Bemis, Colin Strickland, Jennifer Seifert, Kimberly Jordan, Katriona Goldman, Accelerating Medicines Partnership (AMP) RA/SLE Network, B. Paul Morgan, Larry W. Moreland, Myles J. Lewis, Costantino Pitzalis, and V. Michael Holers*

## IMMUNE REGULATION

- 2497 Naturally Occurring Anti-Idiotypic Antibodies Portray a Largely Private Repertoire in Immune-Mediated Thrombotic Thrombocytopenic Purpura  
*Silvan R. Heeb, Monica Schaller, and Johanna A. Kremer Hovinga*

## IMMUNOGENETICS

- 2508 Genome-Wide Mapping of Plasma IgG N-Glycan Quantitative Trait Loci Identifies a Potentially Causal Association between IgG N-Glycans and Rheumatoid Arthritis  
*Di Liu, Jing Dong, Jie Zhang, Xizhu Xu, Qiuyue Tian, Xiaoni Meng, Lijuan Wu, Deqiang Zheng, Xi Chu, Wei Wang, Qun Meng, and Youxin Wang*

## INFECTIOUS DISEASE AND HOST RESPONSE

- 2515 Activation of CD4<sup>+</sup> T Cell–Derived Cannabinoid Receptor 2 Signaling Exacerbates Sepsis via Inhibiting IL-10  
*Jincheng Chen, Fuxiang Wang, Su Zhang, Qiao Lin, Hui Xu, Tengfei Zhu, Ling Peng, Fulan Cen, Fang Li, Zhaoqin Wang, Carl G. Feng, Zhinan Yin, Yingxia Liu, and Guoliang Zhang*
- 2523 Dietary Cholesterol Causes Inflammatory Imbalance and Exacerbates Morbidity in Mice Infected with Influenza A Virus  
*Allison Y. Louie, Joseph Tingling, Evan Dray, Jamal Hussain, Daniel B. McKim, Kelly S. Swanson, and Andrew J. Steelman*
- 2540 Translationally Controlled Tumor Protein–Mediated Stabilization of Host Antiapoptotic Protein MCL-1 Is Critical for Establishment of Infection by Intramacrophage Parasite *Leishmania donovani*  
*Jayeeta Giri, Moumita Basu, Shalini Roy, Tarun Mishra, Kuladip Jana, Ajit Chande, and Anindita Ukil*
- 2549 Cyclooxygenase-Derived Prostaglandin E<sub>2</sub> Drives IL-1–Independent *Mycobacterium bovis* Bacille Calmette-Guérin–Triggered Skin Dendritic Cell Migration to Draining Lymph Node  
*Veronika Krmeska, Juliana Bernardi Aggio, Susanne Nylén, Priscilla Fanini Wowk, and Antonio Gigliotti Rothfuchs*
- 2558 miR-146a Maintains Immune Tolerance of Kupffer Cells and Facilitates Hepatitis B Virus Persistence in Mice  
*Yongai Liu, Lijuan Qin, Jiuru Wang, Xialin Xie, Yu Zhang, Changfei Li, Zeliang Guan, Liyuan Qian, Lizhao Chen, Jun Hu, and Songdong Meng*
- 2573 Clonotypic IgH Response against Systemic Viral Infection in Pronephros and Spleen of a Teleost Fish  
*Rosario Castro, Susana Magadán, Luc Jouneau, Vanessa Mhana, Hang-Phuong Pham, Encarnita Mariotti-Ferrandiz, Adrien Six, François Huetz, and Pierre Boudinot*

## MOLECULAR AND STRUCTURAL IMMUNOLOGY

- 2583 Poor-Quality V $\beta$  Recombination Signal Sequences and the DNA Damage Response ATM Kinase Collaborate to Establish TCR $\beta$  Gene Repertoire and Allelic Exclusion  
*Glendon S. Wu, Erica J. Culberson, Brittney M. Allyn, and Craig H. Bassing*



## CORRECTIONS

- 2593 Correction: Myeloid-Specific Deficiency of *Long-Chain Acyl CoA Synthetase 4* Reduces Inflammation by Remodeling Phospholipids and Reducing Production of Arachidonic Acid-Derived Proinflammatory Lipid Mediators

*Andrew R. Reeves, Brian E. Sansbury, Meixia Pan, Xianlin Han, Matthew Spite, and Andrew S. Greenberg*

- 2594 AUTHOR INDEX

