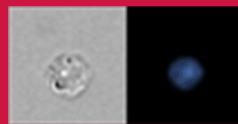


View your cells with clarity:

Amnis® FlowSight® Imaging Flow Cytometer

Learn More >



Luminex
complexity simplified.



203 (12)

J Immunol 2019; 203:3089-3461; ;
<http://www.jimmunol.org/content/203/12>

This information is current as
of May 19, 2022.

Why *The JI*? [Submit online.](#)

- **Rapid Reviews! 30 days*** from submission to initial decision
- **No Triage!** Every submission reviewed by practicing scientists
- **Fast Publication!** 4 weeks from acceptance to publication

**average*

Subscription Information about subscribing to *The Journal of Immunology* is online at:
<http://jimmunol.org/subscription>

Permissions Submit copyright permission requests at:
<http://www.aai.org/About/Publications/JI/copyright.html>

Email Alerts Receive free email-alerts when new articles cite this article. Sign up at:
<http://jimmunol.org/alerts>

The Journal of Immunology is published twice each month by
The American Association of Immunologists, Inc.,
1451 Rockville Pike, Suite 650, Rockville, MD 20852
All rights reserved.
Print ISSN: 0022-1767 Online ISSN: 1550-6606.



TOP READS

- 3089 **Where Has All the CCL2 Gone?** *See article p. 3157*
Editing Autoimmune-Associated Genes in Primary Human T Cells *See article p. 3166*
Seeking Heterogeneity in Human Naive T Cells *See article p. 3179*
ROR α Preserves ILC3s *See article p. 3209*
Stumbling of CD8⁺ T Cell Memory in Drunk Mice *See article p. 3313*
A TCR β -Chain Motif for CD1 *See article p. 3395*

LETTERS TO THE EDITOR

- 3091 Comment on “Cutting Edge: Role of MASP-3 in the Physiological Activation of Factor D of the Alternative Complement Pathway”
Péter Gál, József Dobó, and Gábor Pál
- 3091 Response to Comment on “Cutting Edge: Role of MASP-3 in the Physiological Activation of Factor D of the Alternative Complement Pathway”
Takeshi Machida, Manabu Hayashi, Teizo Fujita, and Hideharu Sekine
- 3092 Comment on “IL-1 β Induces the Rapid Secretion of the Antimicrobial Protein IL-26 from Th17 Cells”
Jonghoon Kang
- 3093 Response to Comment on “IL-1 β Induces the Rapid Secretion of the Antimicrobial Protein IL-26 from Th17 Cells”
Robert L. Modlin

BRIEF REVIEWS

- 3095 The Plasticity of Newly Formed B Cells
Natalia V. Giltiay, Daniela Giordano, and Edward A. Clark

On the cover: Representative image of a histologic small intestine section stained with DAPI (blue) and BODIPY FL dye (green) from mice fed a high-fat diet demonstrating an accumulation of lipid droplets in the villi within 14 wk of high-fat diet administration. Park, C., K. P. Cheung, N. Limon, A. Costanzo, C. Barba, N. Miranda, S. Gargas, A. M. F. Johnson, J. M. Olefsky, and J. M. Jameson. 2019. Obesity modulates intestinal intraepithelial T cell persistence, CD103 and CCR9 expression, and outcome in dextran sulfate sodium–induced colitis. *J. Immunol.* 203: 3427–3435.

The Journal of Immunology (ISSN 0022-1767) is published twice each month by The American Association of Immunologists, Inc., 1451 Rockville Pike, Suite 650, Rockville, MD 20852, Phone: 301-634-7197, Fax: 301-246-8401. Subscription terms: New subscriptions and renewals begin January 1 and expire one year later (see <http://www.jimmunol.org/subscription> for prices and details). A special rate is available to members of The American Association of Immunologists, Inc. (see <http://www.aai.org/membership>). The American Association of Immunologists, Inc., is not responsible for undeliverable issues. Replacement issues can be obtained, if available, at the regular price of single issues (see <http://www.jimmunol.org/Subscription/Claims>). Reprints of individual articles are available only from authors. Periodicals postage paid at Rockville, MD 20852, and at additional mailing offices. Country of origin U.S.A. Printed on acid-free recyclable paper. Postmaster: Send address changes 60 days in advance to *The Journal of Immunology*, Subscription Department, 1451 Rockville Pike, Suite 650, Rockville, MD 20852. Copyright © 2019 by The American Association of Immunologists, Inc.

CUTTING EDGE

- 3107 Cutting Edge: Involvement of the Immunoreceptor CD300c2 on Alveolar Macrophages in Bleomycin-Induced Lung Fibrosis
Yuta Nakazawa, Shigeo Ohtsuka, Chigusa Nakahashi-Oda, and Akira Shibuya

ALLERGY AND OTHER HYPERSENSITIVITIES

- 3113 The *Pglyrp1*-Regulated Microbiome Enhances Experimental Allergic Asthma
Sunil Banskar, Ashley A. Detzner, Maria D. Juarez-Rodriguez, Iztok Hozo, Dipika Gupta, and Roman Dziarski

ANTIGEN RECOGNITION AND RESPONSES

- 3126 Functional Attributes of Antibodies, Effector Cells, and Target Cells Affecting NK Cell–Mediated Antibody-Dependent Cellular Cytotoxicity
A. Robin Temming, Steven W. de Taeye, Erik L. de Graaf, Louise A. de Neef, Gillian Dekkers, Christine W. Bruggeman, Jana Koers, Peter Ligthart, Sietsje Q. Nagelkerke, James C. Zimring, Taco W. Kuijpers, Manfred Wubrer, Theo Rispens, and Gestur Vidarsson

AUTOIMMUNITY

- 3136 Targeting the Immune Complex–Bound Complement C3d Ligand as a Novel Therapy for Lupus
Liudmila Kulik, Jennifer Laskowski, Brandon Renner, Rachel Woolaver, Lian Zhang, Taras Lyubchenko, Zhiying You, Joshua M. Thurman, and V. Michael Holers

CLINICAL AND HUMAN IMMUNOLOGY

- 3148 TNF-Producing Th1 Cells Are Selectively Expanded in Liver Infiltrates of Patients with Autoimmune Hepatitis
Claudia S. Bovenstegen, Miriam Schakat, Marcial Sebode, Roman Zenouzi, Johannes Hartl, Moritz Peiseler, Jun Li, Lara Henze, Anna Woestemeier, Christoph Schramm, Ansgar W. Lohse, Johannes Herkel, and Christina Weiler-Normann
- 3157 CCR2-Mediated Uptake of Constitutively Produced CCL2: A Mechanism for Regulating Chemokine Levels in the Blood
Bin N. Zhao, James J. Campbell, Catherina L. Salanga, Linda S. Ertl, Yu Wang, Simon Yau, Ton Dang, Yibin Zeng, Jeffrey P. McMahon, Antoni Krasinski, Penglie Zhang, Irina Kufareva, Tracy M. Handel, Israel F. Charo, Rajinder Singh, and Thomas J. Schall
- 3166 Efficient CRISPR/Cas9 Disruption of Autoimmune-Associated Genes Reveals Key Signaling Programs in Primary Human T Cells
Warren Anderson, Jerill Thorpe, S. Alice Long, and David J. Rawlings
- 3179 CXCR3 Identifies Human Naive CD8⁺ T Cells with Enhanced Effector Differentiation Potential
Gabriele De Simone, Emilia M. C. Mazza, Antonino Cassotta, Alexey N. Davydov, Mirela Kuka, Veronica Zanon, Federica De Paoli, Eloise Scamardella, Maria Metsger, Alessandra Roberto, Karolina Pilipow, Federico S. Colombo, Elena Tenedini, Enrico Tagliafico, Luca Gattinoni, Domenico Mavilio, Clelia Peano, David A. Price, Satya P. Singh, Joshua M. Farber, Valentina Serra, Francesco Cucca, Francesco Ferrari, Valeria Orrù, Edoardo Fiorillo, Matteo Iannacone, Dmitriy M. Chudakov, Federica Sallusto, and Enrico Lugli
- 3190 Intermediate Monocytes in Acute Alcoholic Hepatitis Are Functionally Activated and Induce IL-17 Expression in CD4⁺ T Cells
Ashwin D. Dhanda, Emily L. Williams, Euan Yates, Philippa J. P. Lait, Lauren P. Schewitz-Bowers, Doha Hegazy, Matthew E. Cramp, Peter L. Collins, and Richard W. J. Lee

IMMUNE REGULATION

- 3199 Invariant NKT Cells Functionally Link Microbiota-Induced Butyrate Production and Joint Inflammation
Sangsin Lee, Jaemoon Koh, Yuna Chang, Hye Young Kim, and Doo Hyun Chung
- 3209 The Transcription Factor ROR α Preserves ILC3 Lineage Identity and Function during Chronic Intestinal Infection
Bernard C. Lo, Diana Canals Hernaez, R. Wilder Scott, Michael R. Hughes, Samuel B. Shin, T. Michael Underhill, Fumio Takei, and Kelly M. McNagny

- 3216 CD31 Acts as a Checkpoint Molecule and Is Modulated by Fc γ R-Mediated Signaling in Monocytes
Giovanna Merchand-Reyes, Frank H. Robledo-Avila, Nathaniel J. Buteyn, Shalini Gautam, Ramasamy Santhanam, Kavin Fatehchand, Xiaokui Mo, Santiago Partida-Sanchez, Jonathan P. Butchar, and Susbeela Tridandapani
- 3225 OX40L-JAG1-Induced Expansion of Lineage-Stable Regulatory T Cells Involves Noncanonical NF- κ B Signaling
Prabhakaran Kumar, Swarali Surendra Lele, Vandhana K. Ragothaman, Divya Raghunathan, Alan L. Epstein, Shigeru Chiba, and Bellur S. Prabhakar
- 3237 Neuropilin-1 Expression on CD4 T Cells Is Atherogenic and Facilitates T Cell Migration to the Aorta in Atherosclerosis
Dalia E. Gaddis, Lindsey E. Padgett, Runpei Wu, and Catherine C. Hedrick
- 3247 Adenosine Receptor Signaling Targets Both PKA and Epac Pathways to Polarize Dendritic Cells to a Suppressive Phenotype
Merve Kayhan, Altay Koyas, Imran Akdemir, Ali Can Savas, and Caglar Cekic

IMMUNE SYSTEM DEVELOPMENT

- 3256 miR-183-96-182 Cluster Is Involved in Invariant NKT Cell Development, Maturation, and Effector Function
Jie Wang, Guihua Li, Xiaojun Wu, Queping Liu, Congcong Yin, Stephen L. Brown, Shunbin Xu, Qing-Sheng Mi, and Li Zhou
- 3268 Cross-Reactivity to Kynureninase Tolerizes B Cells That Express the HIV-1 Broadly Neutralizing Antibody 2F5
Joel Finney, Guang Yang, Masayuki Kuraoka, Shengli Song, Takuya Nojima, Laurent Verkoczy, Daisuke Kitamura, Barton F. Haynes, and Garnett Kelsoe

IMMUNOTHERAPY AND VACCINES

- 3282 Immune-Focusing Properties of Virus-like Particles Improve Protective IgA Responses
Taishi Onodera, Kana Hashi, Rajni Kant Shukla, Motohiro Miki, Reiko Takai-Todaka, Akira Fujimoto, Masayuki Kuraoka, Tatsuya Miyoshi, Kazuo Kobayashi, Hideki Hasegawa, Manabu Ato, Garnett Kelsoe, Kazuhiko Katayama, and Yoshimasa Takahashi
- 3293 Early Protection against Pertussis Induced by Live Attenuated *Bordetella pertussis* BPZE1 Depends on TLR4
Anne-Sophie Debrie, Nathalie Mielcarek, Sophie Lecher, Xavier Roux, Jean-Claude Sirard, and Camille Loch

INFECTIOUS DISEASE AND HOST RESPONSE

- 3301 Pathogenic Role of an IL-23/ $\gamma\delta$ T17/Neutrophil Axis in Coxsackievirus B3-Induced Pancreatitis
Kepeng Yan, Jie Yang, Qian Qian, Dan Xu, Hui Liu, Lin Wei, Min Li, and Wei Xu
- 3313 Chronic Ethanol Consumption Reduces Existing CD8 T Cell Memory and Is Associated with Lesions in Protection against Secondary Influenza A Virus Infections
Zeb R. Zacharias and Kevin L. Legge

INNATE IMMUNITY AND INFLAMMATION

- 3325 STAT3 and STAT5 Signaling Thresholds Determine Distinct Regulation for Innate Receptor-Induced Inflammatory Cytokines, and *STAT3/STAT5* Disease Variants Modulate These Outcomes
Matija Hedl, Rui Sun, Chen Huang, and Clara Abraham
- 3339 Regulatory Role for NK Cells in a Mouse Model of Systemic Juvenile Idiopathic Arthritis
Jessica Vandenhoute, Anneleen Avau, Jessica Filtjens, Bert Malengier-Devlies, Maya Imbrechts, Nathalie Van den Berghe, Kourosh Ahmadzadeh, Tania Mitera, Louis Boon, Georges Leclercq, Carine Wouters, and Patrick Matthys
- 3349 *Staphylococcus aureus*-Derived PSM α Peptides Activate Neutrophil FPR2 but Lack the Ability to Mediate β -Arrestin Recruitment and Chemotaxis
Martina Sundqvist, Karin Christenson, Michael Gabl, André Holdfeldt, Karin Jennbacken, Thor C. Møller, Claes Dahlgren, and Huamei Forsman
- 3361 IFN-Stimulated Genes in Zebrafish and Humans Define an Ancient Arsenal of Antiviral Immunity
Jean-Pierre Levrard, Luc Jouneau, Valérie Briolat, Valerio Laghi, and Pierre Boudinot

- 3374 Binding of the Duck Tembusu Virus Protease to STING Is Mediated by NS2B and Is Crucial for STING Cleavage and for Impaired Induction of IFN- β
Zhen Wu, Wei Zhang, Yuanyuan Wu, Tao Wang, Shaoxiong Wu, Mingshu Wang, Renyong Jia, Dekang Zhu, Mafeng Liu, Xinxin Zhao, Qiao Yang, Ying Wu, Shaiqu Zhang, Yunya Liu, Ling Zhang, Yanling Yu, Leichang Pan, Andres Merits, Shun Chen, and Anchun Cheng

MOLECULAR AND STRUCTURAL IMMUNOLOGY

- 3386 Structural and Functional Basis for LILRB Immune Checkpoint Receptor Recognition of HLA-G Isoforms
Kimiko Kuroki, Haruki Matsubara, Ryo Kanda, Naoyuki Miyashita, Mitsunori Shiroishi, Yuko Fukunaga, Jun Kamishikiryo, Atsushi Fukunaga, Hideo Fukuhara, Kaoru Hirose, Joan S. Hunt, Yuji Sugita, Shunsuke Kita, Toyoyuki Ose, and Katsumi Maenaka
- 3395 A TCR β -Chain Motif Biases toward Recognition of Human CD1 Proteins
Peter Reinink, Adam Shabine, Stephanie Gras, Tan-Yun Cheng, Rachel Farquhar, Katty Lopez, Sara A. Suliman, Josephine F. Reijneveld, Jérôme Le Nours, Li Lynn Tan, Segundo R. León, Judith Jimenez, Roger Calderon, Leonid Lecca, Megan B. Murray, Jamie Rossjohn, D. Branch Moody, and Ildiko Van Rhijn

MUCOSAL IMMUNOLOGY

- 3407 Activation of NLRX1 by NX-13 Alleviates Inflammatory Bowel Disease through Immunometabolic Mechanisms in CD4⁺ T Cells
Andrew Leber, Raquel Hontecillas, Victoria Zoccoli-Rodriguez, Catherine Bienert, Jyoti Chauhan, and Josep Bassaganya-Riera
- 3416 Macrophages Are a Potent Source of *Streptococcus*-Induced IFN- β
Reinhild Feuerstein, Vitka Gres, Núria Elias Perdigó, Sebastian Baasch, Mirjam Freudenhammer, Roland Elling, and Philipp Henneke
- 3427 Obesity Modulates Intestinal Intraepithelial T Cell Persistence, CD103 and CCR9 Expression, and Outcome in Dextran Sulfate Sodium-Induced Colitis
Christa Park, Kitty P. Cheung, Natalie Limon, Anne Costanzo, Cindy Barba, Nadia Miranda, Shannon Gargas, Andrew M. F. Johnson, Jerrold M. Olefsky, and Julie M. Jameson

TRANSPLANTATION

- 3436 A Novel Immunosuppressant, Luteolin, Modulates Alloimmunity and Suppresses Murine Allograft Rejection
Shulin Ye, Huazhen Liu, Yuchao Chen, Feifei Qiu, Chun-Ling Liang, Qunfang Zhang, Haiding Huang, Sumei Wang, Zhong-De Zhang, Weihui Lu, and Zhenhua Dai

TUMOR IMMUNOLOGY

- 3447 Exosomes Produced by Mesenchymal Stem Cells Drive Differentiation of Myeloid Cells into Immunosuppressive M2-Polarized Macrophages in Breast Cancer
Subir Biswas, Gunjan Mandal, Sougata Roy Chowdhury, Suman Purohit, Kyle K. Payne, Carmen Anadon, Arnab Gupta, Patricia Swanson, Xiaqing Yu, José R. Conejo-Garcia, and Arindam Bhattacharyya

CORRECTIONS

- 3461 Correction: T Cell-Dependent Maturation of Pathogen-Specific Igs in the Antrum of Chronically *Helicobacter pylori*-Infected Patients
Laura Neumann, Verena Moos, Claudia Giesecke-Thiel, Thomas Dörner, Ralf Ignatius, Kristina Allers, Toni Aebischer, and Thomas Schneider

3462 AUTHOR INDEX

3464 AD HOC REVIEWERS

3471 AUTHOR INDEX TO VOLUME 203