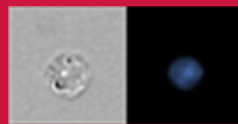


View your cells with clarity:

Amnis® FlowSight® Imaging Flow Cytometer

Learn More >

For Research Use Only. Not for use in diagnostic procedures.



Luminex
complexity simplified.



Correction: Dendritic Cell RIPK1 Maintains Immune Homeostasis by Preventing Inflammation and Autoimmunity

This information is current as of May 21, 2022.

Joanne A. O'Donnell, Jesse Lehman, Justine E. Roderick, Dalia Martinez-Marin, Matija Zelic, Ciara Doran, Nicole Hermance, Stephen Lyle, Manolis Pasparakis, Katherine A. Fitzgerald, Ann Marshak-Rothstein and Michelle A. Kelliher

J Immunol 2018; 200:3020-3021; Prepublished online 12 March 2018;

doi: 10.4049/jimmunol.1800240

<http://www.jimmunol.org/content/200/8/3020>

Why *The JI*? [Submit online.](#)

- **Rapid Reviews! 30 days*** from submission to initial decision
- **No Triage!** Every submission reviewed by practicing scientists
- **Fast Publication!** 4 weeks from acceptance to publication

**average*

Subscription Information about subscribing to *The Journal of Immunology* is online at: <http://jimmunol.org/subscription>

Permissions Submit copyright permission requests at: <http://www.aai.org/About/Publications/JI/copyright.html>

Email Alerts Receive free email-alerts when new articles cite this article. Sign up at: <http://jimmunol.org/alerts>

The Journal of Immunology is published twice each month by The American Association of Immunologists, Inc., 1451 Rockville Pike, Suite 650, Rockville, MD 20852
Copyright © 2018 by The American Association of Immunologists, Inc. All rights reserved.
Print ISSN: 0022-1767 Online ISSN: 1550-6606.



Corrections

O'Donnell, J. A., J. Lehman, J. E. Roderick, D. Martinez-Marin, M. Zelic, C. Doran, N. Hermance, S. Lyle, M. Pasparakis, K. A. Fitzgerald, A. Marshak-Rothstein, and M. A. Kelliher. 2018. Dendritic cell RIPK1 maintains immune homeostasis by preventing inflammation and autoimmunity. *J. Immunol.* 200: 737–748.

In the version of this article originally published, incorrect versions of Fig. 3F and Supplemental Fig. 3B, without data from *Ripk1^{DC KO}* *Mkl1^{-/-}* and littermate controls, were inadvertently included. A revised version of Fig. 3 is shown below. The legend for Fig. 3 was correct as published and is shown below for reference.

Supplemental Fig. 3B has been updated in the supplemental material online. Fig. 3 has also been corrected in the online version of the article, which now differs from the print version as originally published.

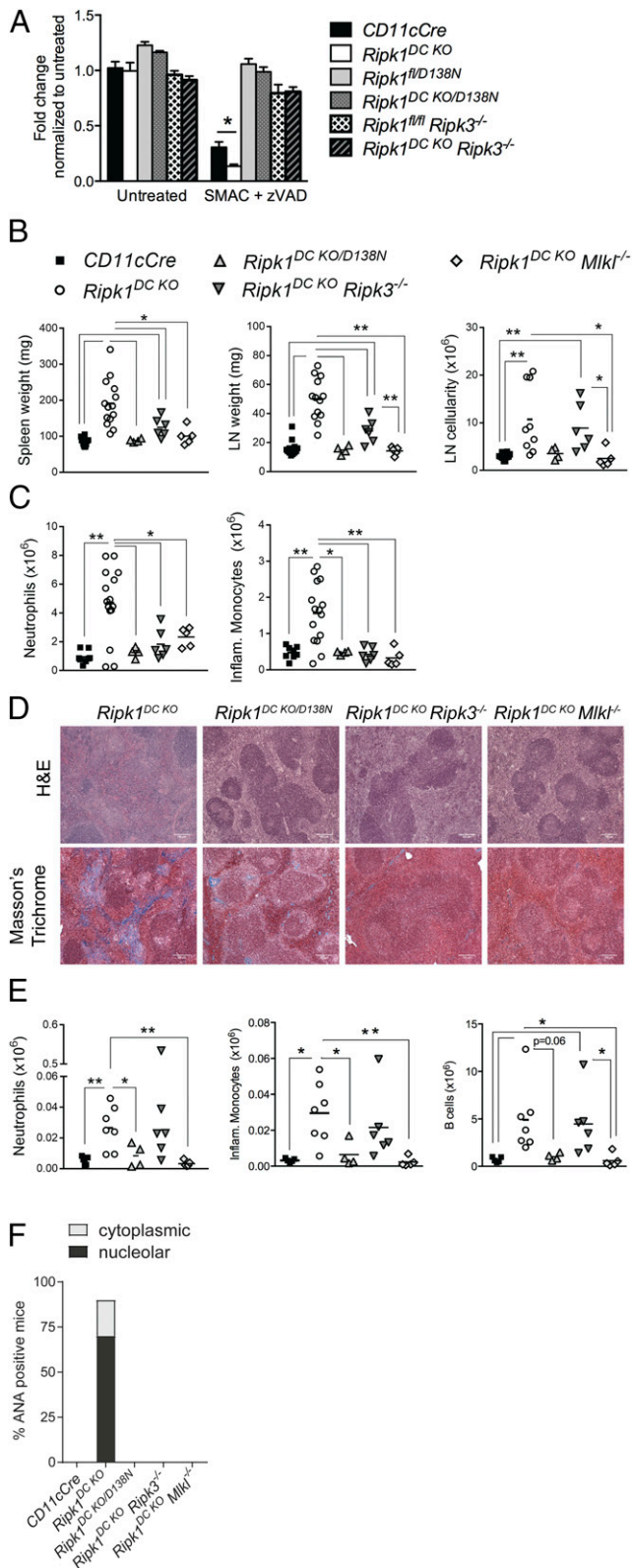


FIGURE 3. DC necroptosis underlies the systemic inflammation in *Ripk1^{DC KO}* mice. (A) DCs from *CD11cCre Ripk1^{fl/D138N}* (*Ripk1^{DC KO/D138N}*) and *Ripk1^{DC KO} Ripk3^{-/-}* mice are protected from necroptosis in vitro. BMDCs were treated with SMAC mimetics and zVAD-fmk. Effects on cell viability were measured at 18 h using Cell Titer Glo. $n = 3-6$ samples. (B) Spleen and lymph node (LN) weights and lymph node cellularity from *CD11cCre*, *Ripk1^{DC KO}*, *Ripk1^{DC KO/D138N}*, *Ripk1^{DC KO} Ripk3^{-/-}*, and

Ripk1^{DC KO} Mki1^{-/-} mice. (C) Neutrophil and inflammatory monocyte numbers in the spleens of *CD11cCre*, *Ripk1^{DC KO}*, *Ripk1^{DC KO/D138N}*, *Ripk1^{DC KO} Ripk3^{-/-}*, and *Ripk1^{DC KO} Mki1^{-/-}* mice. (D) H&E and Masson's trichrome staining of spleens from *Ripk1^{DC KO}*, *Ripk1^{DC KO/D138N}*, *Ripk1^{DC KO} Ripk3^{-/-}*, and *Ripk1^{DC KO} Mki1^{-/-}* mice. (E) Neutrophils, inflammatory monocytes, and B cells are elevated in the lymph nodes of *Ripk1^{DC KO}* and *Ripk1^{DC KO} Ripk3^{-/-}* mice but not *Ripk1^{DC KO/D138N}* or *Ripk1^{DC KO} Mki1^{-/-}* mice. (F) Proportion of mice serum positive for ANAs at 6 mo ($n = 3-6$ mice per genotype). Unless otherwise stated, all data shown are from 16 wk-old mice. *CD11cCre* and *Ripk1^{DC KO}* mouse phenotyping data shown in (B), (C), (E), and (F) were shown in Fig. 2. Error bars, mean \pm SEM. Scale bars, 100 μ m. Unpaired two-tailed Student *t* test (A-C and E). * $p < 0.05$, ** $p < 0.01$.