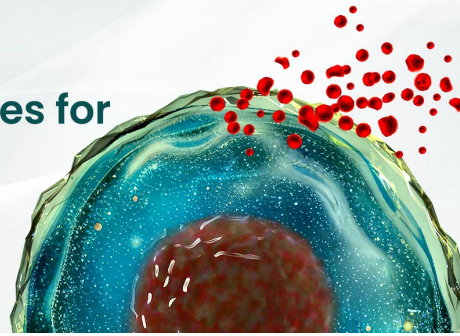




BEST-IN-CLASS Cytokines for BEST Cell Culture

Sino Biological Named 'Growth Factor
Supplier to Watch in 2024' by CiteAb



Learn
More

The Journal of Immunology

RESEARCH ARTICLE | JANUARY 18 2010

Tolerogenic Dendritic Cells Generated with Different Immunosuppressive Cytokines Induce Antigen-Specific Anergy and Regulatory Properties in Memory CD4⁺ T Cells

Honorio Torres-Aguilar; ... et. al

J Immunol (2010) 184 (4): 1765–1775.

<https://doi.org/10.4049/jimmunol.0902133>

Related Content

Lepromin and Tuberculin Reactivity in Adults not Exposed to Leprosy

J Immunol (October,1967)

The Gene Related to Anergy in Lymphocytes, an E3 Ubiquitin Ligase, Is Necessary for Anergy Induction in CD4 T Cells

J Immunol (July,2004)

Tolerogenic Dendritic Cells Generated with Different Immunosuppressive Cytokines Induce Antigen-Specific Anergy and Regulatory Properties in Memory CD4⁺ T Cells

Honorio Torres-Aguilar,* Sergio R. Aguilar-Ruiz,* Gabriela González-Pérez,* Rosario Munguía,[†] Sandra Bajaña,*¹ Marco A. Meraz-Ríos,* and Carmen Sánchez-Torres*

Dendritic cells (DCs) are professional APCs involved in the initiation of both immunity and immunological tolerance. In autoimmune diseases or graft rejections, most reactive lymphocytes are effector/memory cells. It is believed that memory T cells are more resistant to tolerance induction than naive lymphocytes; however, studies on mechanisms for their efficient tolerization are still scarce. In this study, we generated human monocyte-derived DCs by culture with GM-CSF and IL-4 (control DCs), as well as tolerogenic DCs (tDCs) by adding IL-10, IL-10/TGF- β 1, or IL-10/IL-6. Cells were matured with TNF- α /PGE₂. Compared with control DCs, tDCs had similar expression of HLA-DR, CD80, and CD86, lower expression of CD40, higher levels of macrophage markers, enhanced endocytic ability, increased secretion of IL-6, IL-10 (only tDCs generated with IL-10 and tDCs generated with IL-10/IL-6), and PGE₂, and lower secretion of IL-12 and IL-23. In vitro, tDCs had the capacity to induce anergy in tetanus toxoid-specific memory CD4⁺ T cells, whereas the proliferative response to an unrelated Ag was intact. Anergy could be reverted upon exposure to IL-2. tDC-primed T cells have low suppressive ability. Nevertheless, the generation of both anergic and regulatory T cells was more efficient with tDCs generated with IL-10/TGF- β 1. Microarray-based gene expression profiling reflected modulated expression of several transcripts in tDCs. Surface CLIP-HLA-DR complexes and intracellular thrombospondin-1 were increased in the three tDCs. CD39 was highly expressed only in tDC-TGF, which correlated with increased adenosine production. We propose that these molecules, together with IL-10 and prostanoids, are key factors to induce Ag-specific tolerance in memory T cells. *The Journal of Immunology*, 2010, 184: 1765–1775.

Dendritic cells (DCs) include a heterogeneous family of professional APCs involved in the initiation of both immunity and immunological tolerance (1). T cell peripheral tolerance can be generated and maintained by DCs,

leading to the promotion of anergy, immune deviation, deletion of self-reactive lymphocytes, or generation of regulatory T cells (Tregs) (2). Tolerogenic DCs (tDCs) are characterized by low constitutive expression of positive costimulatory molecules compared with inhibitory factors (i.e., Ig-like transcripts [ILT] 2, 3, 4, B7-H1), as well as by their ability to suppress a broad range of effector T cell responses (3). Immature DCs (iDCs) and semi-mature developmental stages of DC differentiation and some subtypes of DCs, such as resting plasmacytoid DC, are prone to induce T cell anergy and Treg development (4–8). Moreover, alternatively activated mature DCs exposed to various suppressive agents, as well as to immunomodulatory drugs, are endowed with tolerogenic functions. Several factors, including IL-10, TGF- β 1, hepatocyte growth factor, vasoactive intestinal peptide, vitamin D3, or corticosteroids, among others, and exposure to microbial products or tumor-derived factors, modulate DC function and favor tDC differentiation (9–18). Monocyte-derived tDCs reflect an incomplete or altered status in DC differentiation and are being considered in the design of therapeutic strategies.

Induction of tolerance of self-reactive naive T cells is essential for prevention of unwanted responses against peripheral self-Ag. However, once conditions such as autoimmune diseases develop, tolerization must also be focused on memory cells (19). Furthermore, all individuals contain alloreactive T cells within both the naive and memory T cell population that are potentially deleterious in transplantation (20). Naive and memory T lymphocytes respond differently to immune stimuli, and although naive cells can successfully be tolerized, it is believed that memory cells are more resistant to tolerance induction (20). Memory cells far outnumber the precursor frequencies of Ag-specific naive cells, rapidly divide and display immediate effector functions on Ag encounter, and have low costimulatory requirements for full activation, which made them

*Department of Molecular Biomedicine and [†]Department of Cellular Biology, Centro de Investigación y de Estudios Avanzados del Instituto Politécnico Nacional, Mexico City, Mexico

¹Current address: Arthritis and Immunology Program, Oklahoma Medical Research Foundation, Oklahoma City, OK.

Received for publication July 6, 2009. Accepted for publication December 10, 2009.

This work was supported by a grant to C.S.-T. from Secretaría de Educación Pública-Consejo Nacional de Ciencia y Tecnología (42712-Q). H.T.-A., S.R.A.-R., and G.G.-P. are recipients of Consejo Nacional de Ciencia y Tecnología predoctoral scholarships (180583, 180592, and 180578, respectively).

The sequences presented in this article have been submitted to the National Center for Biotechnology Information's Gene Expression Omnibus under accession number GSE18921.

Address correspondence and reprint requests to Dr. Carmen Sánchez-Torres, Centro de Investigación y de Estudios Avanzados del I.P.N. (CINVESTAV-IPN), Department of Molecular Biomedicine, Av. I.P.N. 2508, C.P. 07360, Mexico City, Mexico. E-mail address: csanchez@cinvestav.mx

The online version of this paper contains supplemental material.

Abbreviations used in this paper: cDC, control dendritic cell; cT, control T lymphocyte; DC, dendritic cell; DMPX, 3,7-dimethyl-1-propargylxanthine; DX, dextran; Foxp3, forkhead box p3; FTH1, ferritin heavy polypeptide 1; iDC, immature dendritic cell; ILT, Ig-like transcript; iTSP-1, intracellular thrombospondin 1; L-NAME, L-nitro-arginine methyl ester; M ϕ , macrophage; mDC, mature dendritic cell; MFI, mean fluorescence intensity; rT, T cell with no prior stimulation in vitro; tDC, tolerogenic dendritic cell; tDC-IL6, tolerogenic dendritic cell generated with IL-10/IL-6; tDC-IL10, tolerogenic dendritic cell generated with IL-10; tDC-TGF, tolerogenic dendritic cell generated with IL-10/TGF- β 1; Tind, indicator responder T cell; Treg, regulatory T cell; TSP-1, thrombospondin 1; tT, tolerant T lymphocyte; TT, tetanus toxoid; tT-IL10, tolerant IL10 T cell; tT-TGF, tolerant TGF T cell; tT-IL6, tolerant IL6 T cell.

Copyright © 2010 by The American Association of Immunologists, Inc. 0022-1767/10/\$16.00

refractory to tolerance induction using conventional costimulatory (CD28/CD40L) blockade (21). However, experimental autoimmune encephalomyelitis induced by memory CD4⁺ T lymphocytes can be ameliorated by blockade of ICOS or OX40 pathways (22). Furthermore, peripheral memory CD4⁺ and CD8⁺ T cells become tolerant in response to low doses of Ag and low-avidity agonist-altered peptide ligands (23), and tolerization can also occur by persistent exposure to systemic Ag (24). Additionally, CD4⁺CD25⁺ Treg cells can dampen memory T cell responses (25).

One of the potential targets to inhibit specific recall responses is the tDC. However, the current knowledge on the modulation of memory lymphocyte function by these APCs is still limited (9) and is mostly based on studies of allogeneic responses (17, 26). In the present work, we sought to identify factors involved in the induction of Ag-specific tolerance of human memory CD4⁺ T cells by tDCs. tDCs were generated from monocytes with different immunosuppressive cytokines, IL-10, TGF- β 1, and IL-6. Collectively, our data demonstrated that IL-10/TGF- β 1, and to a lesser extent IL-10 and IL-10/IL-6, generate tDCs capable of inducing anergy in Ag-specific memory CD4⁺ T lymphocytes and of differentiating them into IL-10-producing regulatory cells. The suppression induced by tDC is achieved through mechanisms involving IL-10, thrombospondin 1 (TSP-1), and PGs. Finally, we describe that tDCs express a high level of cell surface CLIP bound to HLA-DR, which might be associated with reduced presentation of exogenous Ag.

Materials and Methods

Media and reagents

Cells were cultured in RPMI 1640 medium supplemented with 10% heat-inactivated autologous serum, 2 mM L-glutamine, 1 mM sodium pyruvate, 0.1 mM nonessential amino acids, 100 U/ml penicillin, 100 μ g/ml streptomycin, and 50 μ M 2-ME. The following reagents were used: human recombinant GM-CSF (1000 U/ml, Leucomax, Schering-Plough, Kenilworth, NJ); IL-4 (15 ng/ml), TNF- α (40 ng/ml), IL-10 (20 ng/ml), TGF- β 1 (20 ng/ml), IL-6 (25 ng/ml), and IL-12 (5 ng/ml) (R&D Systems, Minneapolis, MN); IL-2 (20 U/ml, Life Technologies BRL, Rockville, MD); PGE₂ (0.1 μ g/ml) (Calbiochem, San Diego, CA); rat neutralizing mAb to IL-10 (10 μ g/ml), to IL-6 (10 μ g/ml), and Ig isotype controls (BD Biosciences, San Jose, CA); mouse neutralizing mAb to TSP-1 (25 μ g/ml) (NeoMarkers, Thermo Fisher Scientific, Fremont, CA); CFSE and FITC-coupled dextran (FITC-DX, 0.5 μ g/ml) (Molecular Probes, Eugene, OR); tetanus toxoid (TT, 0.1 μ g/ml) and candidin (0.1 μ g/ml), kindly supplied by the National Institute of Hygiene and the Department of Microbiology and Parasitology, Universidad Nacional Autónoma de México, Mexico City, Mexico, respectively; LPS from *Escherichia coli* 0111:B4 (0.5 μ g/10⁶ cells/ml), PKH26 red fluorescent cell linker, L-nitro-arginine methyl ester (0.5 mM), indomethacin (10 μ M), ARL67156 (10 μ M), and 3,7-dimethyl-1-propargylxanthine (DMPX) (10 μ M) (Sigma-Aldrich, St. Louis, MO).

Cell separation and differentiation of peripheral blood monocytes

PBMCs were purified from buffy coats of healthy volunteers vaccinated with TT. CD14⁺ monocytes and autologous or allogeneic memory CD4⁺CD45RA⁻ T lymphocytes, as well as allogeneic naive CD4⁺CD45RO⁻ T lymphocytes, were separated by magnetic cell sorting using MACS isolation kits (Miltenyi Biotec, Auburn, CA). T cells were separated by negative selection using a CD4⁺ T cell isolation kit and anti-CD45RA Abs (memory) or anti-CD45RO Abs (naive). Monocytes were treated with GM-CSF and IL-4 alone to obtain control DCs (cDCs) or simultaneously with IL-10 (tDC-IL10), IL-10/TGF- β 1 (tDC-TGF), or IL-10/IL-6 (tDC-IL6) to obtain tDCs. Cultures were fed with fresh medium and cytokines every 2 d. At day 6, TT, candidin (0.1 μ g/ml), or no Ag was added to iDCs, and 8 h later, cells were treated with TNF- α and PGE₂ for 2 more d to obtain mature DCs (mDCs). mDCs were employed along the study except for endocytosis and cytokine production assays upon LPS stimulation, where iDCs were the cells evaluated.

Flow cytometry analysis and Abs used for staining

Purified mAbs to CD1a, CD14, CD16, CD32, CD40, CD80, CD83, CD86, CD163, CD206, FITC-labeled mAbs to CLIP-loaded HLA-DR molecules, PE-conjugated mAbs to HLA-DR, CCR7, CD25, CD127, CD152, and

CD205 (BD Biosciences), purified mAbs to TSP-1 (NeoMarkers, Thermo Fisher Scientific), to CD39 (Santa Cruz Biotechnology, Santa Cruz, CA), and allophycocyanin-labeled mAbs to forkhead box p3 (Foxp3) (eBioscience, San Diego, CA) were used. Purified mAbs were detected with FITC-labeled goat F(ab')₂ anti-mouse Ig polyclonal Abs (DakoCytomation, Carpinteria, CA). For detection of intracellular CTLA-4, Foxp3, or TSP-1, cells were fixed and permeabilized before staining. Cell death was evidenced by Annexin V (BD Biosciences) and propidium iodide (50 μ g/ml) staining. CLIP expression was defined, taking into account the amount of HLA-DR and CLIP per cell, as follows: relative CLIP amount = (% CLIP⁺ cells/% DR⁺ cells) \times [mean fluorescence intensity (MFI) CLIP/MFI DR]. Samples were analyzed on an FACSCalibur (BD Biosciences).

Morphological analysis

mDCs were rested in fresh medium for 4 h at 37°C. Then supernatant was removed, and cells were fixed with methanol for 3 min and analyzed by light microscopy.

Endocytosis assay

iDCs were incubated with FITC-DX (DX, M_r = 40,000) for 1 h at 37°C. Uptake was stopped by washing the cells with ice-cold PBS containing BSA and sodium azide. Controls were set by incubating the cells with FITC-DX at 4°C. Samples were analyzed by flow cytometry.

Allogeneic and autologous CD4⁺ T cell proliferation assay

CD4⁺CD45RA⁻ lymphocytes were labeled with CFSE. Then T cells were cocultured with allogeneic DCs or with autologous TT-loaded or unloaded DCs at a 10:1 T cell/DC ratio for 5 d. Subsequently, lymphocytes were harvested and stained with mAbs to CD25, CD39, CD127, CD152, or Foxp3. In some assays, lymphocytes were collected on day 5 and rested in fresh medium for up to 8 d. Then they were stained with the above mAbs. Lymphocyte proliferation was assessed by the CFSE dilution method along the study.

Anergy assay

To detect Ag-specific T cell unresponsiveness, unlabeled CD4⁺CD45RA⁻ lymphocytes were cocultured with autologous TT-loaded cDCs or tDCs at a 10:1 T cell/DC ratio for 5 d. On day 5, lymphocytes were harvested and rested in fresh medium for 4 additional d. Lymphocytes primed with cDCs were referred as control T lymphocyte cells (cT) and those primed with tDC-IL10, tDC-TGF, or tDC-IL6 as tolerant IL-10, TGF, or IL-6 T cells (tT-IL10, tT-TGF, and tT-IL6), respectively. As a control, autologous CD4⁺CD45RA⁻ T cells with no prior stimulation *in vitro* (rT) were used. After the resting period, each lymphocyte population was labeled with CFSE. Then, T cells were rechallenged in a second proliferation assay with autologous TT-loaded, candidin-loaded, or unloaded cDCs at a 10:1 T cell/DC ratio for 5 d. Occasionally, exogenous IL-2 was added to the cocultures. On day 5, lymphocytes were harvested and stained with the Ab mentioned above.

Cytokine detection in culture supernatants

iDCs were incubated for 24 h with LPS or without additional stimulus as a control. Production of soluble factors in these supernatants was quantified with ELISA kits: IL-6, IL-10, IL-12 p75 (BD Biosciences), IL-23 p19/p40 (eBioscience), active TGF- β 1, and PGE₂ (R&D Systems). Production of IL-2, IFN- γ , IL-10, and PGE₂ in supernatants collected at 1, 3, and 5 d from cocultures of memory CD4⁺ T cells with mDC was measured with ELISA kits (BD Biosciences and R&D Systems). Cytokine secretion was also quantified in supernatants of lymphocytes harvested after 5 d of stimulation, rested for 4 d, and cultured for 24 h in fresh medium with immobilized anti-CD3 mAb (5 μ g/ml, BD Biosciences).

Analysis of regulatory T cell function

For suppression assays on memory T cells, lymphocytes previously stimulated with TT-pulsed cDCs (cT) were used as indicator responder T cells (T_{ind}). T_{ind}s were labeled with CFSE and cultured at different ratios with PKH26-labeled tolerant T cells (tT-IL10, tT-TGF, or tT-IL6) and TT-loaded or unloaded cDCs (10:1 T cell/DC ratio) for 5 d. Controls were established by adding PKH26-labeled cT or rT. For suppression assays on naive T lymphocytes, memory tT and cT cells were generated from donor A as mentioned previously. CD4⁺ naive T cells were purified from donor B and labeled with CFSE (T_{ind}). These lymphocytes were cocultured with TT-loaded or unloaded cDCs from donor A in the presence or absence of PKH26-labeled memory cT or tT cells at a 10:1 T cell/DC ratio. In both assays, lymphocytes were collected on day 5 and CFSE dilution of T_{ind} analyzed by flow cytometry.

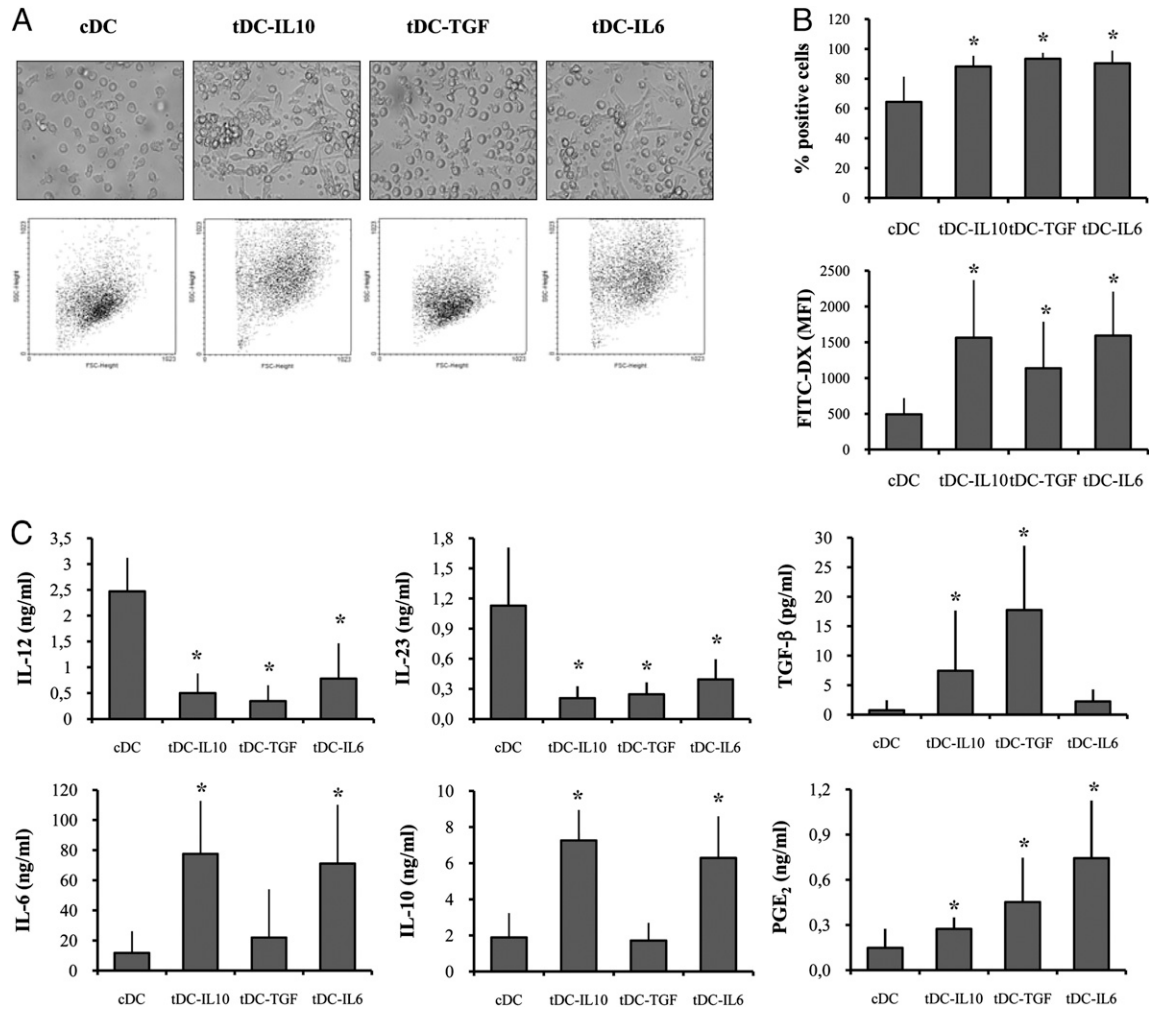


FIGURE 1. Morphological and functional characteristics of cDCs and tDCs. *A*, Light microscopic analysis (*upper panel*) and forward and side light scatter profile (*lower panel*) of mature cDCs and tDCs. Results are representative of one of six experiments. *B*, Endocytic ability of DCs. Six-day immature cDCs and tDCs were incubated with FITC-DX and then analyzed by flow cytometry. Shown is the percentage of cells incorporating FITC-DX and the MFI of internalized FITC-DX. *C*, Cytokine production by LPS-stimulated DCs. Immature cDCs and tDCs were treated with LPS for 24 h. Production of IL-12 p75, IL-23, TGF-β1, IL-6, IL-10, and PGE₂ in culture supernatants was quantified by ELISA. Data in *B* and *C* are the mean ± SD of three to six independent experiments. Statistical analysis (tDC versus cDC). **p* < 0.05.

Microarray assays and data analysis

RNA was isolated from cell lysates of 12-h matured cDCs and tDCs from four different healthy donors using Trizol reagent (Life Technologies BRL). Equal amounts of total RNA from the four donors was pooled, and 30 μg was used for cDNA synthesis with CyScribe First-Strand cDNA labeling

kit (Amersham Biosciences, Piscataway, NJ). cDNA synthesis from cDCs was carried out by incorporating dUTP-Cy3 and dUTP-Cy5 for tDC. Equal quantities of labeled cDCs and tDC cDNA were hybridized to the Human arrays (Institute of Cellular Physiology, DNA Microarray Unit, Universidad Nacional Autónoma de México, Mexico City, Mexico) for 14 h at 42°C. Human array was designed with the Human 10,000 50-mer oligo

Table I. Phenotypic profile of control and tolerogenic mDCs

	cDC	tDC-IL10	tDC-TGF	tDC-IL6
CD1a	76.7 ± 25.5 (41.8 ± 27.6)	59.2 ± 28.5 (17.3 ± 8)	89.6 ± 13.6 (52 ± 38.8)	65.7 ± 27.9 (15.2 ± 8)
CD14	7 ± 3.5 (9.8 ± 7.6)	69.5 ± 27.8* (24 ± 12.8)**	36.5 ± 24.3* (12.3 ± 7.4)	73.8 ± 31.9* (25.2 ± 11.2)**
CD16	5 ± 2.2 (6.4 ± 0.9)	66.6 ± 32.9* (21.2 ± 11.6)**	31.4 ± 17.0* (9.1 ± 3.3)	69.6 ± 26.1* (22.4 ± 11.8)**
CD32	47.9 ± 14.5 (13.2 ± 6.1)	70.5 ± 25.5* (27.5 ± 14.5)	55.9 ± 28.9 (30.5 ± 32.3)	85.1 ± 10* (34.4 ± 22.7)
CD40	97.9 ± 4.7 (90.4 ± 66.5)	89 ± 21.5 (57.8 ± 35.7)**	84.1 ± 31.2 (67.2 ± 48.6)**	84.8 ± 25.1 (56.1 ± 37.1)**
CD80	89.7 ± 7 (12.7 ± 4.8)	73.4 ± 19.8 (14.7 ± 2.7)	87.1 ± 23.8 (13.5 ± 1.3)	86.6 ± 24.4 (15.7 ± 3)
CD83	77.2 ± 24.2 (31.2 ± 34.9)	69.7 ± 30.7 (28.9 ± 28.6)	63 ± 35 (29 ± 32.5)	71.6 ± 31.9 (28.8 ± 28.2)
CD86	90.2 ± 12.9 (37.6 ± 25.4)	85.8 ± 17.4 (21.5 ± 5.1)	61.3 ± 23.1 (20 ± 6.8)	81.9 ± 22 (18.9 ± 2.5)
CD163	5.7 ± 1.6 (10.9 ± 4.3)	43.3 ± 23.1* (15.2 ± 6)	26.1 ± 11.7* (11.9 ± 5.1)	39 ± 19.5* (14.9 ± 4.8)
CD205	89.8 ± 13.6 (22.9 ± 12.1)	84.5 ± 23 (15 ± 4.6)	78.1 ± 35.2 (17.9 ± 8.1)	86.8 ± 24.6 (18.7 ± 7.2)
CD206	67.4 ± 23.1 (12.6 ± 4.3)	77.5 ± 21* (23.4 ± 7.9)**	69.4 ± 19.6 (16.7 ± 7.7)	87.5 ± 9.8* (27.5 ± 14.7)**
HLA-DR	89 ± 14.4 (38.5 ± 25.7)	96.8 ± 2.9 (36.1 ± 19.7)	70.8 ± 23.5 (25.6 ± 15)**	95.1 ± 4.8 (30 ± 11.6)
CCR7	22.7 ± 10.7 (18 ± 14)	73.1 ± 28.6* (38.5 ± 37.3)	44.7 ± 23.8* (25.9 ± 22.7)	67.3 ± 25.4* (34.5 ± 39.4)

Data are presented as the percentage of positive cells of six independent donors (MFI of each marker), mean ± SD. **p* < 0.05 (tDC versus cDC, percentage of positive cells); ***p* < 0.05 (tDC versus cDC, MFI).

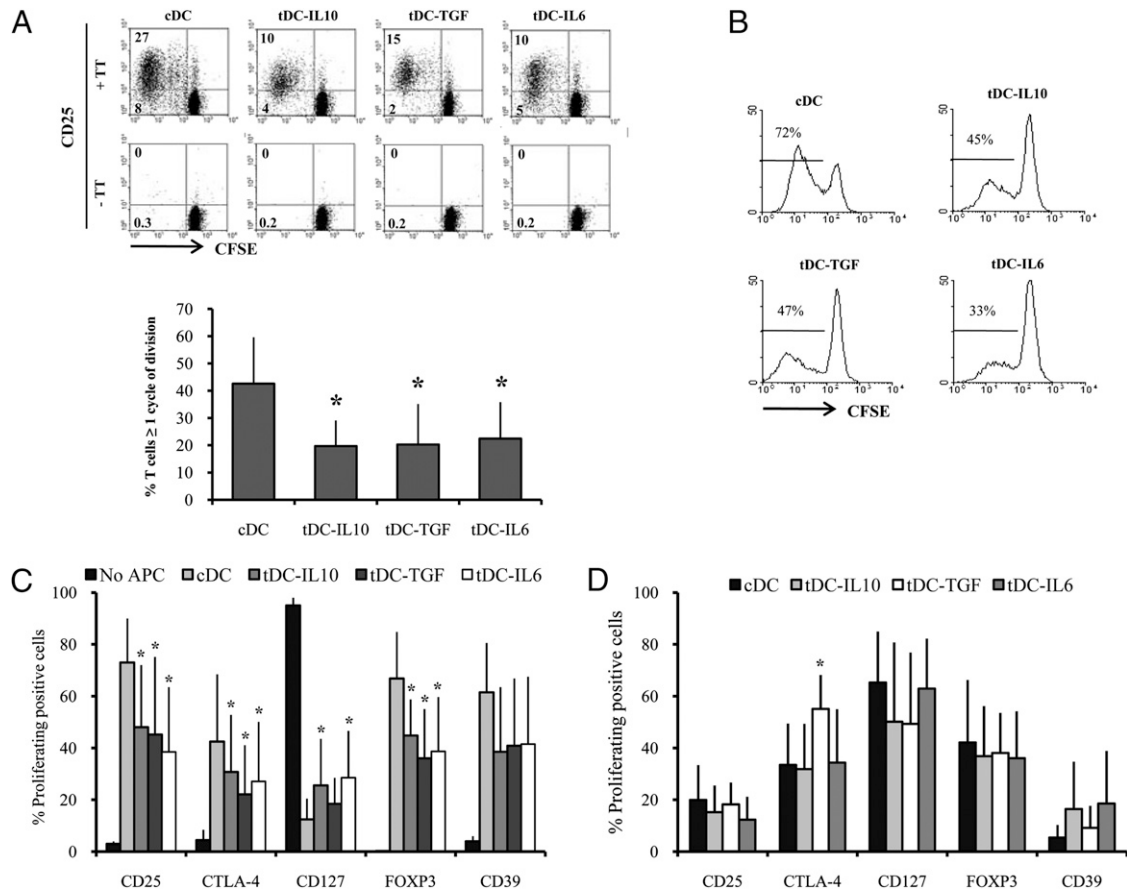


FIGURE 2. Lymphoproliferative activity of memory $CD4^+$ T cells induced by cDC and tDC. *A*, CFSE-labeled autologous memory $CD4^+$ T cells were cocultured with TT-loaded cDCs or tDCs at a 1:10 DC/T cell ratio. After 5 d, lymphocytes were harvested, and the percentage of proliferating cells was calculated by the CFSE dilution method. *Upper panel* shows a representative donor, where lymphocytes were cultured with TT-loaded DC (+TT) or unpulsed DC (-TT) and counterstained with mAb to CD25. *Lower panel* shows the percentage of proliferating cells represented as the mean \pm SD of 14 different donors. *B*, Allogeneic memory $CD4^+$ T cell response induced by cDCs and tDCs. Cultures were set and analyzed as above, and a representative assay out of three is shown. Percentages in *A* and *B* correspond to cells with ≥ 1 cycle of division. *C*, Memory T cells were cultured as in *A*, in presence or absence of DCs (no APC). After 5 d, lymphocytes were harvested, counterstained with mAb to CD25, CTLA-4, CD127, Foxp3, or CD39, and analyzed by flow cytometry. Shown is the percentage of positive cells for each marker within the cycling lymphocytes (100%). *D*, Phenotypic analysis of TT-specific memory $CD4^+$ T cells stimulated as in *C* and rested for 8 d. Data in *C* and *D* are the mean \pm SD of five donors. Statistical analysis (tDC versus cDC). * $p < 0.05$.

library from MWG Biotech Oligo sets (Huntsville, AL; www.mwgbio.com). Acquisition and quantification of array images were performed in a ScanArray 4000 scanner (Packard BioChips, PerkinElmer, Waltham, MA). For each spot, the Cy3 and Cy5 density mean and background mean values were calculated with the ArrayPro Analyzer software (Media Cybernetics, Bethesda, MD). Data were normalized and analyzed with the GenArise software (Institute of Cellular Physiology, Universidad Nacional Autónoma de México, Mexico City, Mexico; www.ifc.unam.mx/genarise/). The software identifies differentially expressed genes by calculating an intensity-dependent z-score, which measures the number of SD of a data point from the mean according to the following formula: $z_i = [R_i - \text{mean}(R)]/\text{sd}(R)$, where z_i is the z-score, R_i the log-ratio for each element, and $\text{sd}(R)$ the SD of the log-ratio. With these criteria, the elements with a z-score ≥ 2 SD would be significantly differentially expressed genes.

The data obtained in this publication have been deposited in the National Center for Biotechnology Information's Gene Expression Omnibus and are accessible through GEO Series accession number GSE18921 (www.ncbi.nlm.nih.gov/geo/query/acc.cgi?acc=GSE18921).

Semiquantitative RT-PCR

RNA was isolated from cell lysates of 12-h matured cDCs and tDCs from four different healthy donors, and cDNA was synthesized by reverse transcription with oligo(dT)₁₅ and Superscript RNase H-reverse transcriptase (Life Technologies BRL). PCR was performed with 10 pmol of 5' and 3' specific primers for the selected genes (Supplemental Table I). GAPDH mRNA was amplified as a control of RNA integrity. PCR products were separated on agarose gels. Ratios of mRNA/GAPDH band densities were determined by densitometry.

Statistical analysis

The Student two-tailed paired *t* test was used to assess statistical differences between two experimental groups, assuming equal variances. Probability levels for correlation were calculated using the Spearman's rank test (correlation coefficient, *r*).

Results

tDCs have mixed characteristics of both DCs and macrophages

Mature cDCs and tDCs were generated in vitro as described in *Materials and Methods*. cDCs had typical DC morphology, with large cell bodies and sharp cytoplasmic projections; they were nonadherent to plastic and promoted few cluster formations. Immunosuppressive cytokines affected tDC morphology: cells were bigger (only tDC-IL10 and tDC-IL6), with spread cytoplasmic projections, more adherent, and frequently aggregated in clusters (Fig. 1*A*, *upper panel*). FACS analysis revealed a similar profile of forward and side light scatter of cDCs and tDC-TGF, whereas tDC-IL10 and tDC-IL6 were bigger and more complex (Fig. 1*A*, *lower panel*). cDCs displayed characteristic phenotypes of mDCs, expressing CD83, CD1a, CD205, HLA-DR, CD40, CD80, and CD86, but with null or low expression of monocyte/macrophage (M ϕ) markers. In contrast, although tDCs had similar expression of CD1a, CD83, CD205, HLA-DR, CD80, and CD86, they

showed significantly higher expression of CD14, CD16, CD32, CD163, CD206, and CCR7 (always greater in tDC-IL10 and tDC-IL6 than in tDC-TGF) and lower levels of CD40 (Table I). These phenotypic similarities and differences were already present in immature cDCs and tDCs (Supplemental Table II). Thus, tDCs display a mixed phenotype, bearing monocyte/M ϕ and DC markers. Functionally, tDCs had higher endocytic ability than cDCs (Fig. 1B). They secreted reduced levels of IL-12 p75 and IL-23 and enhanced amounts of PGE₂ in response to LPS; production of IL-6 and IL-10 was also increased in tDC-IL10 and tDC-IL6. TGF- β 1 levels were very low in all DCs, but significantly higher in tDC-TGF and tDC-IL10 (Fig. 1C).

Lymphocyte proliferation induced by DCs

A key feature of immunogenic DCs is their high capacity for priming T cells. Thus, we analyzed the ability of DCs to present TT as a soluble Ag to autologous CD4⁺ memory T lymphocytes. As shown in Fig. 2A, tDCs had reduced APC capacity compared with cDC. We also evaluated the direct pathway of alloantigen presentation (Fig. 2B). Similarly, tDCs were poorer stimulators of lymphocyte proliferation than cDCs in this experimental model. Cell death did not seem to influence the decreased proliferation of tDC-stimulated lymphocytes, as there was no enhanced apoptosis in lymphocytes upon activation with tDC compared with cDC (Supplemental Fig. 1).

Proliferating cDC-stimulated memory T cells (cT) presented an activated phenotype in TT-specific responses (Fig. 2C). They up-regulated CD25 and CTLA-4 and downregulated CD127. We also tested Foxp3 and CD39 expression as Ag related with Treg cells (27, 28). Both markers were expressed in substantial numbers of dividing lymphocytes. The phenotype of tDC-activated lymphocytes (tT) did not exhibit significant differences among the three tDCs (Fig. 2C). However, the percentage of cycling tTs expressing CD25, CTLA-4, Foxp3, and CD39 was lower than that for cTs and positively correlated with the ability of DCs to induce lymphoproliferation ($r \geq 0.90$), whereas CD127 expression was higher and inversely correlated ($r = -0.88$) (data not shown). To determine the phenotype stability of proliferating lymphocytes, cells were harvested after 5 d of priming and rested for 8 d (Fig. 2D). At that time, the expression of CD25 and CD39 notably diminished, paralleled with an increase of CD127. Overall, there were no significant differences between lymphocytes stimulated with cDC or tDC, although tT-TGF lymphocytes maintained significant high levels of CTLA-4 (Fig. 2D). The percentage of Foxp3⁺ cells remained high (40–50% of the cells), but very similar among conditions (Fig. 2D).

Cytokine production by DC-stimulated memory lymphocytes

Given the inferior APC capacity of tDC, we asked if this event would be reflected in the extent of cytokine production by memory T cells. To this end, we measured their cytokine production during priming with TT-loaded DCs. Differences between cTs and tTs in IL-2 and IL-10 secretion were evident at day 1, when IL-2 production was significantly lower, and IL-10 higher, in supernatants of cultures containing tDCs (Fig. 3A). IFN- γ production by tT was significantly lower from day 3 onwards. tT secreted inferior amounts of IL-2 compared with cT throughout the culture, whereas only tT-IL10 and tT-IL6 maintained significantly greater production of IL-10. Furthermore, we measured cytokine production in supernatants of T cells harvested from the primary culture and restimulated with immobilized anti-CD3 Ab (Fig. 3B). tT secreted significantly higher levels of IL-10 and lower amounts of IL-2 and IFN- γ than cT. These data confirmed that at least part of the IL-10 response detected during priming was driven by lymphocytes.

IL-10/TGF- β 1-treated DCs induced strong Ag-specific anergy in memory T cells

To further determine whether tDCs induced tolerance of memory T cells, we tested the proliferative response of these lymphocytes in a two-step culture system. cTs cocultured with TT-loaded cDCs in the first coculture responded vigorously to rechallenge with the same stimulators (Fig. 4A, top panel). In contrast, tTs were hyporesponsive to further stimulation with cDCs, thus confirming the tolerogenic profile of these DCs. As a control, we used CD4⁺ memory T cells, which did not receive the first stimulation but were challenged with TT-pulsed cDCs (rT), and corroborated that these cells proliferated robustly. When lymphocytes were rechallenged with the unrelated Ag candidin, cTs and tTs responded similarly, which suggests that tolerant lymphocytes were rendered anergic specifically to TT (Fig. 4A, lower middle panel). Moreover, anergy can be circumvented by adding exogenous IL-2 (Fig. 4A, bottom panel). Addition of IL-12 at priming (26) did not significantly reverse the anergy induced by any tDC (Supplemental Fig. 2). The weakest responses among tolerant lymphocytes were detected in tT-TGF (Fig. 4B), pointing out that the combination of IL-10 and TGF- β 1 generated DCs with substantial tolerogenic abilities for memory T cells. In terms of cytokine production, the three tTs had an IL-2^{lo}IFN- γ ^{lo}IL-10^{hi} profile (Fig. 4C); which is analogous to what was found during priming.

Memory tT cells have low suppressor capacity

According to numerous studies, anergy and suppression are key characteristics of Tregs (10, 12). Thus, we wondered whether memory tTs have suppressive abilities on conventional memory T cells. To this purpose, CFSE-labeled cTs (referred to as T_{ind})

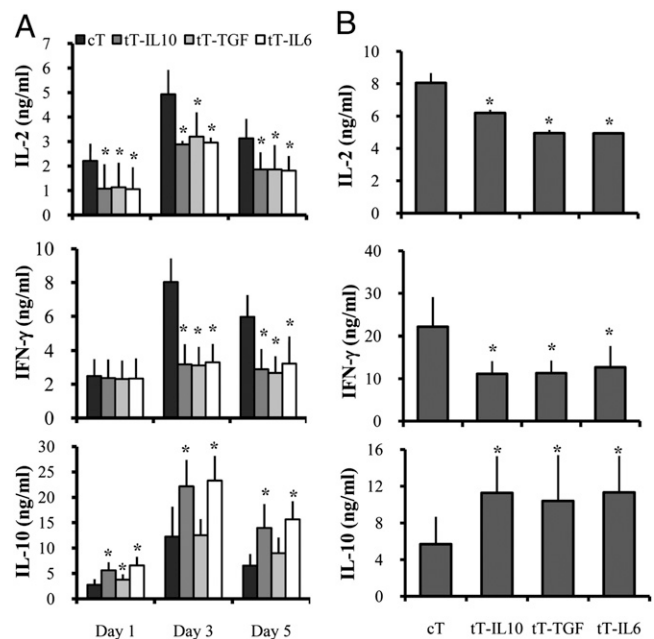
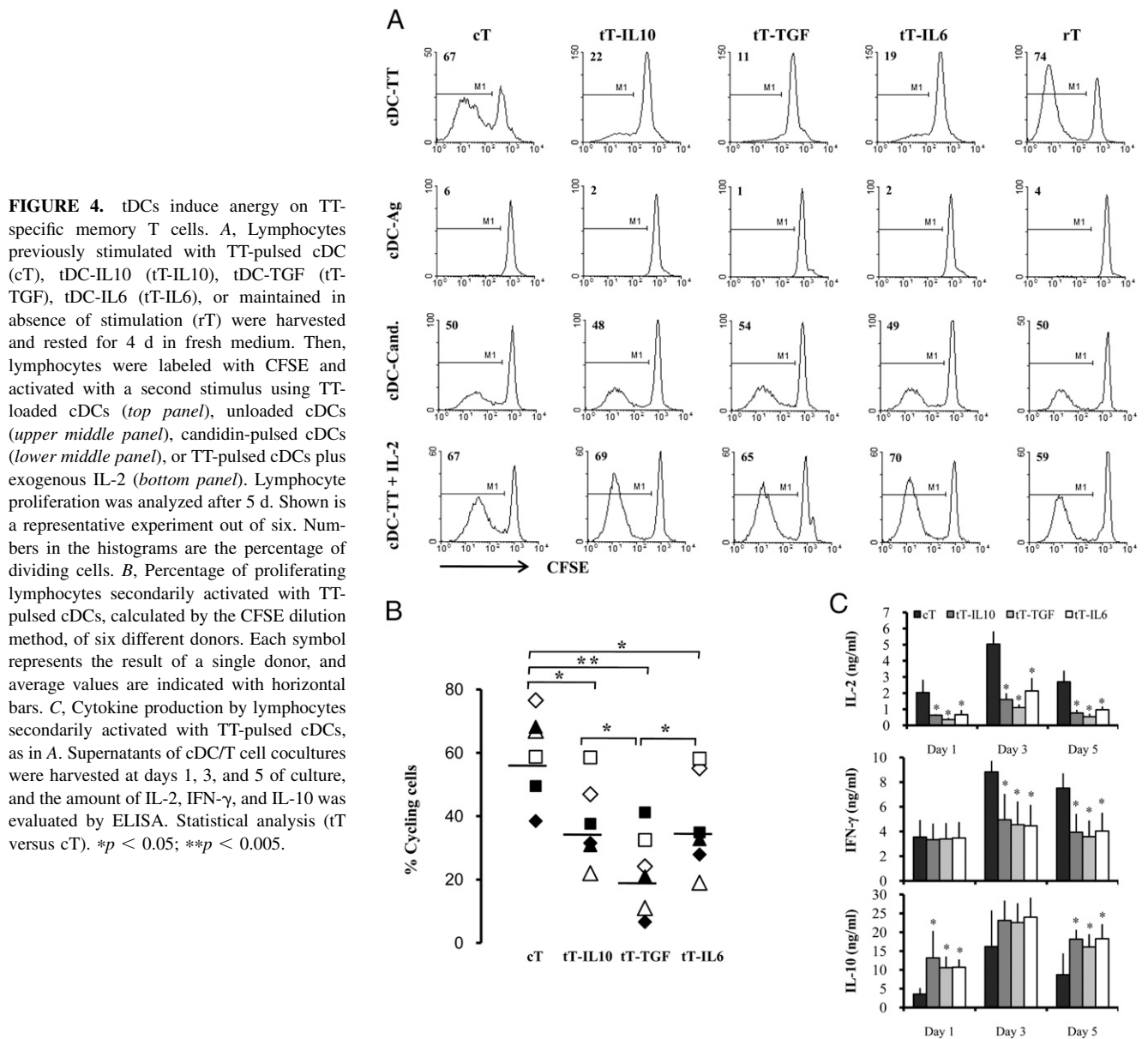


FIGURE 3. Cytokine production by memory CD4⁺ T cells stimulated with TT-loaded cDCs and tDCs. *A*, Kinetics of cytokine production by primed T lymphocytes cultured as in Fig. 2A. Supernatants of DC/T cell cocultures were harvested at days 1, 3, and 5 of the primary stimulation, and the amount of IL-2, IFN- γ , and IL-10 was evaluated by ELISA. *B*, Lymphocytes activated as outlined in *A* were rested for 4 d. Then, cells were counted, and equal numbers were restimulated for 24 h with immobilized anti-CD3 mAb. Analysis of IL-2, IFN- γ , and IL-10 secretion on culture supernatants was performed by ELISA. Data are the mean \pm SD of three (IL-2) or four (IFN- γ , IL-10) different donors. Statistical analysis (tT versus cT). * $p < 0.05$.



were stimulated with TT-pulsed cDCs, either alone or in presence of different ratios of PKH26-labeled tTs (Fig. 5A, *upper panel*). In addition, to determine whether cTs could have suppressor abilities on their own, we included controls with different ratios of PKH26-labeled cTs or autologous memory T cells with no prior in vitro stimulation (rT) (Fig. 5A, *lower panel*). We detected dose-dependent inhibition of T_{ind} proliferation only with tTs, but at ratios equal to or higher than 1:1 (tT: T_{ind}). tT-TGFs were the most efficient suppressor cells. Likewise, tT-TGFs were able to suppress, to some extent, naive $CD4^+$ T cell alloresponses, whereas other tTs were ineffective (Fig. 5B).

Global gene expression profile of DCs by oligonucleotide array

We next investigated the mechanisms underlying the induction of the anergic state and/or regulatory function of tT cells. To define the molecular changes induced in tDCs, we compared the cDC gene expression profile with each subtype of tDC by microarray assays. Bioinformatic analysis was performed, taking into account genes that showed a z-score of at least ≥ 2 . Of the $\sim 10,000$ human genes represented in the gene chip, 196, 152, and 229 genes were upregulated, whereas 203, 155, and 160 genes were downregulated

in tDC-IL10, tDC-TGF, and tDC-IL6, respectively. Thirty-six genes were upregulated and 34 downregulated in the three tDCs. A selection of these genes is given in Supplemental Table III. We specifically analyzed several molecules that might be involved in reduced DC activation and anergy/Treg induction: inhibitory receptors [LILRB3 (ILT5) and FCGR2B (Fc γ RIIB)], molecules involved in inhibition of cell proliferation [THBS1 (TSP-1), ferritin heavy polypeptide 1 (FTH1), INDO (IDO), and ENTPD1 (CD39)], and molecules involved in Ag processing and presentation (CTSBL, CD74, and HLA-DOB). We also evaluated the expression of genes involved in chemotaxis (IL-8, CXCL1, CCL18, and CXCR3). The differential expression of some of these molecules was corroborated by RT-PCR and/or flow cytometry (Fig. 6 and Supplemental Fig. 3). Expression of genes such as INDO or CCL18 did not show differences among DCs.

Immunosuppressive factors expressed by tDCs

Based on the microarray results, we subsequently evaluated at the protein level some of the molecules increased on tDC with potential immunosuppressive effects. We first assessed the levels of intracellular (i)TSP-1, which promotes the generation of human

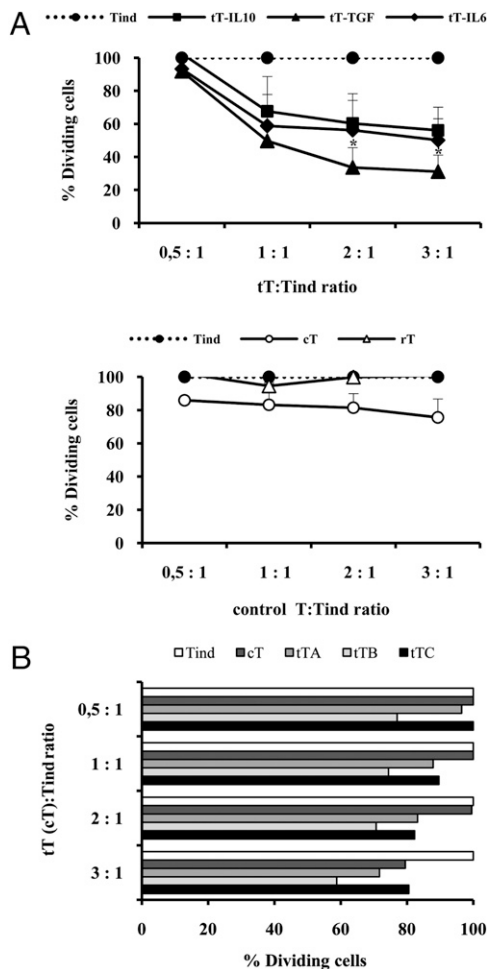


FIGURE 5. tDCs induce differentiation of memory T cells with suppressive abilities. *A*, Memory $CD4^+$ T_{ind} were labeled with CFSE and seeded with or without different ratios of PKH26-labeled tT-IL10, tT-TGF, or tT-IL6 (*upper panel*). Lymphocytes were stimulated with TT-loaded or unloaded cDCs for up to 5 d. On day 5, lymphocytes were harvested, and CFSE dilution was analyzed by flow cytometry. Shown is a graphical representation of the data (mean \pm SD) obtained from four separate donors, where the percentage of cycling T_{ind} was set to 100%. Proliferation of T_{ind} alone is shown as dotted lines, and solid lines represent the proliferation of T_{ind} in presence of PKH26-labeled T cells. Controls of the above assays were established with PKH26-labeled cTs or rTs, cultured under the same conditions (*lower panel*). Statistical analysis (tT versus T_{ind}). * $p < 0.05$. *B*, Naive $CD4^+$ T_{ind} were labeled with CFSE and cultured with allogeneic TT-loaded cDCs in the presence or absence of different ratios of allogeneic memory PKH26-labeled cTs, tT-IL10, tT-TGF, or tT-IL6 (memory lymphocytes and cDCs were from the same donor). On day 5, lymphocytes were harvested, and CFSE dilution was analyzed by flow cytometry. The percentage of cycling T_{ind} was set to 100%. Shown is the result of a representative experiment.

peripheral Tregs through its ligation with CD47 (28). Our data demonstrate that tDCs had significant enhanced expression of iTSP-1 compared with cDCs (Fig. 6A, *left panel*) and that IL-10 was its major inducer (Fig. 6A, *right panel*).

The ecto-ATPase CD39, together with CD73, has been associated with the suppressive machinery of Tregs, acting through the modulation of pericellular levels of adenosine, which has potent antiproliferative effects (29, 30). Among the DCs, tDC-TGF had the highest expression of CD39, whereas tDC-IL10 and tDC-IL6 expressed significantly lower levels than cDCs (Fig. 6B, *upper and left lower panels*). TGF- β 1 was the major inducer of CD39 expression, whereas IL-10 or IL-6 reduced its expression (not de-

picted). Adenosine production correlated with the levels of surface CD39, but differences among DCs were not significant (Fig. 6B, *right lower panel*). Finally, we noticed that several genes involved in Ag processing and presentation were modulated on tDCs, such as the invariant chain (CD74), the cysteine proteases cathepsins B and L, and HLA-DOB (Fig. 6C, *upper panel*, and Supplemental Fig. 3). We hypothesized that these changes could affect the Ag processing machinery of tDC and therefore their ability to present soluble Ag. Particularly, the enhanced levels of HLA-DOB mRNA in tDCs led us to evaluate the amount of surface CLIP peptides bound to HLA-DR molecules. The three tDCs showed a significant increase in the relative amount of surface CLIP compared with cDCs (Fig. 6C, *left lower panel*), and this enhancement was induced by IL-10 (Fig. 6C, *right lower panel*).

Identification of factors involved in tDC suppression

We further investigated the mechanisms by which tDCs inhibit T cell proliferation. As tDCs secreted immunosuppressive IL-10 and IL-6 and expressed increased levels of TSP-1, we added neutralizing Abs against these factors to the cultures of TT-loaded tDCs and memory lymphocytes (Fig. 7A). IL-10 and TSP-1 were involved in the inhibitory function of all tDCs, and their participation was especially determinant in tDC-IL10 and tDC-IL6. Blockade of IL-6 also augments T cell division with tDC-IL6. The involvement of PGE₂ in the diminished lymphoproliferation induced by tDCs was also investigated. The PGE₂ synthesis inhibitor indomethacin significantly increased the T cell proliferation induced by the three tDCs (Fig. 7B). Indeed, PGE₂ is secreted at high levels in tDC/T cell cocultures, whereas it is almost absent in cDC/T cell cocultures (Supplemental Fig. 4). Another inhibitor of T cell proliferation, NO (31), did not have any influence in our system (Fig. 7C). None of the factors tested above seemed to be involved in cDC-induced T cell proliferation (Fig. 7A–C). Lastly, we evaluated the role of adenosine. The addition of the ecto-ATPase inhibitor ARL67156 or the A2 adenosine receptor antagonist DMPX fully restored T cell proliferation only in lymphocytes stimulated with tDC-TGF (Fig. 7D). Consequently, PGs are common factors responsible for memory T cell hyporesponsiveness mediated by the three tDCs; additionally, IL-10 and TSP-1 appear to be decisive in tDC-IL-10 and tDC-IL6, whereas adenosine seems to have a unique role in tDC-TGF.

Discussion

Regulatory DCs are promising tools for clinical application in transplantation, autoimmunity, or allergies (8). However, T cells of the memory subset are key players in those diseases (19), and their resistance to immune suppression has been stated previously (20, 21). Increased understanding of what makes DCs tolerogenic for memory T cells is, therefore, important for therapeutic purposes. In this study, we evaluated the tolerogenic abilities of three types of DCs, generated with IL-10, IL-10/TGF- β 1, or IL-10/IL-6. The two former tDCs have been previously described (9, 10, 12). For the third type, we used IL-6 to enforce the differentiation of monocytes from the DC toward the M ϕ pathway (32), with the rationale that M ϕ are more inferior APCs than DCs (33). Nevertheless, we found almost no differences in phenotype or function between tDC-IL10 and tDC-IL6, perhaps owing to the overlapped signaling of IL-10 and IL-6 through STAT-3.

Phenotypically, mature tDCs express HLA-DR, CD80, CD86, and CD83 at levels comparable to cDCs, which differs from that reported by others (9, 12). We attribute those disparities to the use of different maturation stimuli and/or different timing in the addition of the suppressive cytokines during DC differentiation. However, and in agreement with other studies (9, 12, 33), tDCs also express low

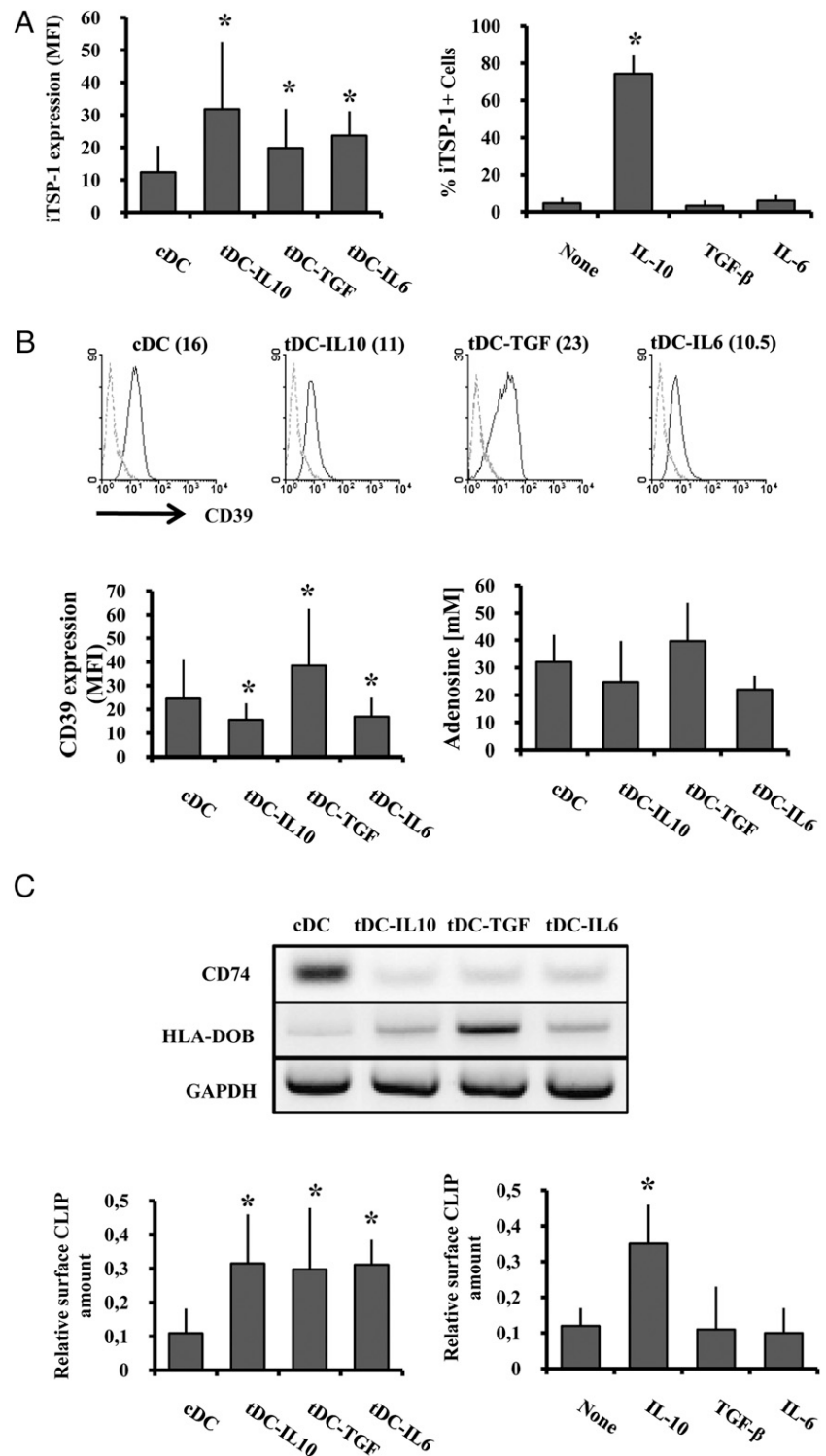


FIGURE 6. Expression of intracellular TSP-1, CD39, and surface CLIP in mature DCs. **A**, Expression of iTSP-1 in cDCs and tDCs. MFI of iTSP-1 of three independent donors is depicted as the mean \pm SD (*left panel*). Percentage of iTSP-1+ mDC cultured in absence (none) or presence of the immunosuppressive cytokines alone (IL-10, TGF- β 1, IL-6) (*right panel*). **B**, Expression of CD39 and adenosine production in culture media. Expression of CD39 in a representative donor (*upper panel*). Solid histograms represent the fluorescence with anti-CD39 mAb and dotted histograms the isotype control mAb. Numbers above the histograms are the MFI of CD39 in this particular individual. MFI of CD39, given as the mean \pm SD of seven independent donors (*left lower panel*), and adenosine production by DCs (*right lower panel*), depicted as the mean \pm SD of three different experiments. Adenosine was measured by HPLC in supernatants of mDC incubated in fresh medium containing 5 mM ATP for 1 h at 37°C. **C**, Expression of molecules involved in Ag processing and presentation in DC. RT-PCR of CD74, HLA-DOB, and GAPDH from a representative donor (*upper panel*). Relative surface amount of CLIP bound to HLA-DR on DCs (*left lower panel*) and on DCs cultured in absence (none) or presence of the immunosuppressive cytokines alone (*right lower panel*). Statistical analysis (tDC versus cDC). * $p < 0.05$.

levels of CD40, which could be involved in their reduced APC ability, and markers tightly associated with the M ϕ lineage, such as CD14, CD16, CD32, CD163, and the macrophage mannose receptor (CD206). This could, in fact, partially mediate their increased ability to endocytose FITC-DX, which is also characteristic of M ϕ (33). Of note, tDC-TGFs were more similar to cDCs both morphologically and phenotypically, and they expressed M ϕ markers at lower levels than the two other tDCs, suggesting that TGF- β 1 and IL-10, in addition to their synergistic immunosuppressive effect, could exert some opposite roles (34). tDCs also have a strikingly high expression of CCR7 that might be an advantage for therapeutic

purposes (35). We have previously detected higher expression of CCR7 in M ϕ differentiated from monocytes, either with GM-CSF or M-CSF, than in DCs from the same donors differentiated with GM-CSF plus IL-4 and matured with LPS (data not shown). Taking this into account, we do not discount that the high levels of CCR7 in tDCs reflect their partial M ϕ phenotype.

In terms of cytokine secretion, the three tDCs generated in this study had in common an IL-12^{lo}IL-23^{lo}PGE₂^{hi} phenotype. However, only tDC-IL10 and tDC-IL6 secreted high amounts of IL-10 and IL-6, unlike tDC-TGF, again showing a closer relationship between cDC and tDC-TGF. The presence of TGF- β 1 in tDC-

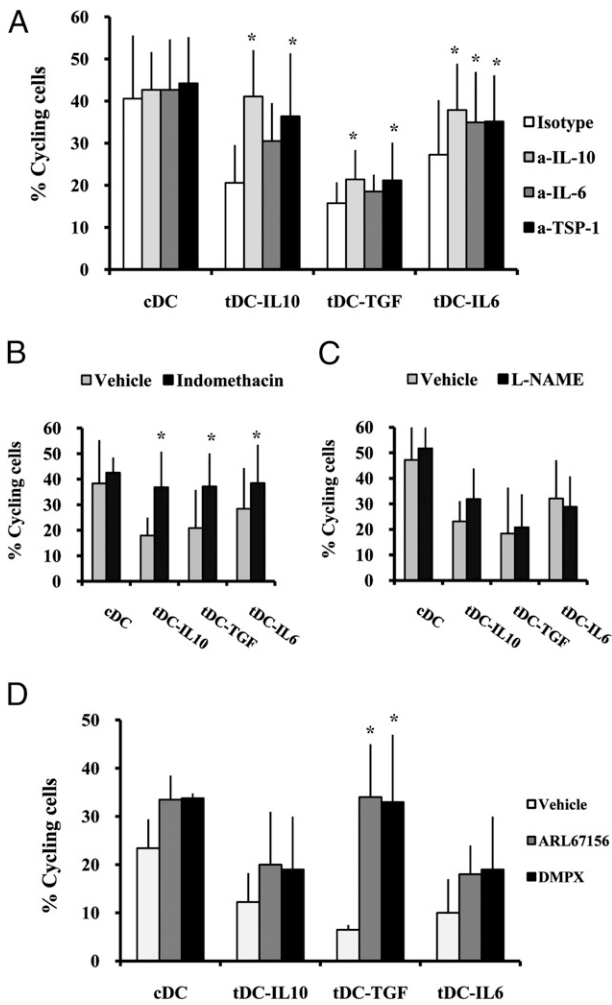


FIGURE 7. IL-10, TSP-1, PGE₂, and adenosine inhibit T cell proliferation induced by tDCs. TT-loaded DCs were cocultured with CFSE-labeled CD4⁺ memory T cells in the presence of neutralizing mAb to IL-10, IL-6, TSP-1, or their respective Ig isotype controls (A), the PG synthesis inhibitor indomethacin (B), the NO synthesis inhibitor L-nitro-arginine methyl ester (L-NAME) (C), the ecto-ATPase inhibitor ARL67156, the A2 adenosine receptor antagonist DMPX (D), or vehicle (B–D). After 5 d, the number of proliferating cells was evaluated by the CFSE dilution method. Statistical analysis (inhibitors versus control conditions for each DC). **p* < 0.05.

TGF cultures could account for their low IL-10 secretion (13, 36). In addition, all DCs synthesize very low levels of TGF-β1, which is what it takes to suggest that TGF-β1 secreted by tDCs would not have a determinant role in their inhibitory ability.

The low APC capacity of the three tDCs was exhibited in allogeneic and autologous memory responses against soluble Ag, which suggests their potential use for a variety of conditions. Moreover, many of the tDC-stimulated T cells became anergic. Their hyporesponsiveness was Ag-specific, as responses to an unrelated Ag were not impaired, and based on an IL-2 deficiency. Despite the fact that all tDCs similarly stimulated memory lymphocytes at priming (Fig. 2A), tDC-TGFs induce a more robust anergic state (Fig. 4B), thus they must deliver unique anergic signals to T cells. Moreover, they generate T cells with regulatory capacities (Fig. 5).

Memory cTs and tTs were phenotypically very similar. Upon stimulation, they increased CD25, CTLA-4, CD39, and Foxp3 expression and downregulated IL-7Rα. The augment was less pronounced in tTs than in cTs, but we found a strong correlation

between the percentage of cycling cells and the percentage of cells expressing these markers. Therefore, it is likely that the differences could lie in disparities in the proliferation rate. tDCs did not induce a preferential expansion of Foxp3⁺ cells compared with Treg cells, but is also expressed by activated lymphocytes that may not possess regulatory activity (26, 37). The observed phenotype was not stable, and, after a resting period, lymphocytes downregulated CD25 and CD39, whereas IL-7Rα was upregulated. The percentage of cells expressing CTLA-4 or Foxp3, two negative regulators of lymphocyte activation (27), remained relatively high in all conditions, suggesting that they are necessary for longer periods to return memory lymphocytes to quiescence. Of note, the expression of high levels of CTLA-4 seemed to be a signature of tT-TGFs, which could influence their hyporesponsiveness. Overall, the phenotype of cT and tT (CD25^{lo}CD127^{hi}CD39^{lo}Foxp3^{int}) differs from typical natural or adaptive Tregs (27, 29, 38). It has been established that tDCs generate classical Tregs (CD4⁺CD25⁺Foxp3^{hi}) from naive CD4⁺CD25⁻ lymphocytes (14); however, our data suggest a distinctive scenario in Ag-driven memory responses. tT lymphocytes showed low suppressive ability on memory and naive responses (only significant with tT-TGF, but at high tT:T_{ind} ratios). The low suppressive ability of memory tTs could be a general feature of these cells, and it has been reported by other authors (26). Furthermore, tTs secrete low but detectable levels of IL-2 and IFN-γ during activation, which may be explained in part by their lower proliferative capacity. However, a hallmark of tTs is their increased secretion of IL-10 (Figs. 3, 4C), which could control their inefficient proliferation and effector cytokine production (14, 17). It seems unlikely that the suppression observed in our system was mediated by classical CD4⁺CD25⁺ Treg lymphocytes activated or expanded by tDCs (see above). Given their characteristic high IL-10 secretion and their differentiation in a setting of IL-10-treated DCs and elevated IL-10, we postulate that tTs are closer to the adaptive type 1 Tregs (39).

In an attempt to identify molecules involved in tDC suppression, we found differential gene expression of several factors related with immune tolerance (TSP-1, CD39, ILT5, FTH1, FcγRIIB) (28, 29, 40, 41) and assessed some of them at the protein level. The three tDCs showed significant increased expression of TSP-1 and of CD39 only in tDC-TGF. Regarding CD39, we detected no statistically significant differences in adenosine release among cDCs and tDCs; however, tDC-TGFs have a propensity to generate more adenosine than the other DC populations (Fig. 6B). Notably, almost full abrogation of T cell hyporesponsiveness occurred in cultures of tDC-IL10 and tDC-IL6 after blockade of IL-10 or TSP-1, indicating that production of these factors is a mechanism responsible for the downregulation of T cell proliferation. Conversely, none of these inhibitors noticeably abrogate T cell hyporesponsiveness induced by tDC-TGF, which correlates with their low secretion of IL-10. Thus, we tested the influence of additional factors known to downregulate T cell responses, such as PGs, NO, and adenosine. Whereas NO has no involvement in tDC suppression, the presence of an inhibitor of cyclooxygenase activity fully recovers T cell proliferation with every tDC. Noteworthy is the fact that adenosine boosted the tolerogenic potential only of tDC-TGF. According to these data, we postulate that adenosine plays a central role in tDC-TGF tolerogenicity. This nucleoside could act directly on tDC-TGF or T cells (30, 42) and might also operate indirectly through PGE₂ induction (43). In addition, PGE₂ and IL-10 may be the primary mediators involved in tDC-IL10- and tDC-IL6-induced T cell hyporesponsiveness. Both PGE₂ and IL-10 might in turn induce TSP-1 production, reinforcing tDC regulatory activity (44–46).

Because the molecules involved in T cell suppression are soluble factors, but their action seemed to be Ag-specific, we hypothesized that the anergy and/or the regulatory properties induced in T lymphocytes could be the result of a combination of these factors and specific signals received through the TCR. We describe in this paper for the first time the increase of surface CLIP bound to HLA-DR molecules in tDCs that depend on the presence of IL-10. This could represent a mechanism of tolerance induction due to a lower representation of the antigenic peptides on the cell surface (47), given that engagement of TCR below its threshold of activation induces tolerance in memory T cells (23). The reason why tDCs express increased surface CLIP is currently unknown. In APCs, the nonclassical class II molecule HLA-DM catalyzes CLIP dissociation from class II α/β dimers. Another nonclassical class II Ag, HLA-DO, downmodulates DM function. The amount of cell surface CLIP:HLA-DR seems to correlate with DO:DM ratio and the efficacy of Ag presentation (48). Although we observed an increase of HLA-DOB mRNA in the three tDCs, the presence of HLA-DOB in monocyte-derived DCs has not been demonstrated at the protein level (49); however, it was detected in primary DCs, including immature Langerhans cells, certain subtypes of blood DCs, and tonsillar interdigitating DCs (50). Thus, although the role of HLA-DOB in our system is unclear, the data provided here indicate that IL-10 is involved in the enhancement of surface CLIP and could represent a novel mechanism of tolerance induction by APCs.

In summary, IL-10 alone or in combination with TGF- β 1 induces the generation of tolerogenic DCs and is able to induce an anergic state in CD4⁺ memory T cells. An altered pattern of immunosuppressive factor production (adenosine, PGs, IL-10, TSP-1, and potentially ILT5 or FTH1), and perhaps a defective presentation of exogenous soluble Ag, may all contribute to confer regulatory properties to these DCs.

Acknowledgments

We thank the blood donors for their generosity and the Blood Bank staff at Centro Médico Nacional La Raza Hospital (Mexico City, Mexico) for their support in providing the blood samples. We also thank Dr. Bruno Escalante and Hilda Vargas for their assistance in PGE₂ measurement, Victor H. Rosales for help with flow cytometry, Dr. Victoria Chagoya and Susana Vidrio for conducting the assays of adenosine measurements, Dr. Concepción Torriello for supplying candidin, Julio C. Ramírez for technical assistance, and Ms. Ninfa Arreola for her aid in the preparation of the manuscript.

Disclosures

The authors have no financial conflicts of interest.

References

- Moser, M. 2003. Dendritic cells in immunity and tolerance—do they display opposite functions? *Immunity* 19: 5–8.
- Steinman, R. M., D. Hawiger, and M. C. Nussenzweig. 2003. Tolerogenic dendritic cells. *Annu. Rev. Immunol.* 21: 685–711.
- Morelli, A. E., and A. W. Thomson. 2007. Tolerogenic dendritic cells and the quest for transplant tolerance. *Nat. Rev. Immunol.* 7: 610–621.
- Dhodapkar, M. V., R. M. Steinman, J. Krasovskiy, C. Munz, and N. Bhardwaj. 2001. Antigen-specific inhibition of effector T cell function in humans after injection of immature dendritic cells. *J. Exp. Med.* 193: 233–238.
- Hawiger, D., K. Inaba, Y. Dorsett, M. Guo, K. Mahnke, M. Rivera, J. V. Ravetch, R. M. Steinman, and M. C. Nussenzweig. 2001. Dendritic cells induce peripheral T cell unresponsiveness under steady state conditions in vivo. *J. Exp. Med.* 194: 769–779.
- Roncarolo, M. G., M. K. Levings, and C. Traversari. 2001. Differentiation of T regulatory cells by immature dendritic cells. *J. Exp. Med.* 193: F5–F9.
- Menges, M., S. Rössner, C. Voigtländer, H. Schindler, N. A. Kukutsch, C. Bogdan, K. Erb, G. Schuler, and M. B. Lutz. 2002. Repetitive injections of dendritic cells matured with tumor necrosis factor α induce antigen-specific protection of mice from autoimmunity. *J. Exp. Med.* 195: 15–21.
- Hadeiba, H., T. Sato, A. Habtezion, C. Oderup, J. Pan, and E. C. Butcher. 2008. CCR9 expression defines tolerogenic plasmacytoid dendritic cells able to suppress acute graft-versus-host disease. *Nat. Immunol.* 9: 1253–1260.
- Sato, K., N. Yamashita, and T. Matsuyama. 2002. Human peripheral blood monocyte-derived interleukin-10-induced semi-mature dendritic cells induce anergic CD4(+) and CD8(+) T cells via presentation of the internalized soluble antigen and cross-presentation of the phagocytosed necrotic cellular fragments. *Cell. Immunol.* 215: 186–194.
- Steinbrink, K., E. Graulich, S. Kubsch, J. Knop, and A. H. Enk. 2002. CD4(+) and CD8(+) anergic T cells induced by interleukin-10-treated human dendritic cells display antigen-specific suppressor activity. *Blood* 99: 2468–2476.
- Akbari, O., R. H. DeKruyff, and D. T. Umetsu. 2001. Pulmonary dendritic cells producing IL-10 mediate tolerance induced by respiratory exposure to antigen. *Nat. Immunol.* 2: 725–731.
- Sato, K., N. Yamashita, M. Baba, and T. Matsuyama. 2003. Modified myeloid dendritic cells act as regulatory dendritic cells to induce anergic and regulatory T cells. *Blood* 101: 3581–3589.
- Geissmann, F., P. Revy, A. Regnault, Y. Lepelletier, M. Dy, N. Brousse, S. Amigorena, O. Hermine, and A. Durandy. 1999. TGF- β 1 prevents the non-cognate maturation of human dendritic Langerhans cells. *J. Immunol.* 162: 4567–4575.
- Rutella, S., G. Bonanno, A. Procoli, A. Mariotti, D. G. de Ritis, A. Curti, S. Danese, G. Pessina, S. Pandolfi, F. Natoni, et al. 2006. Hepatocyte growth factor favors monocyte differentiation into regulatory interleukin (IL)-10⁺IL-12^{low/neg} accessory cells with dendritic-cell features. *Blood* 108: 218–227.
- Gonzalez-Rey, E., A. Chorny, A. Fernandez-Martin, D. Ganea, and M. Delgado. 2006. Vasoactive intestinal peptide generates human tolerogenic dendritic cells that induce CD4 and CD8 regulatory T cells. *Blood* 107: 3632–3638.
- Penna, G., S. Amuchastegui, N. Giarratana, K. C. Daniel, M. Vulcano, S. Sozzani, and L. Adorini. 2007. 1,25-Dihydroxyvitamin D3 selectively modulates tolerogenic properties in myeloid but not plasmacytoid dendritic cells. *J. Immunol.* 178: 145–153.
- Woltman, A. M., S. W. van der Kooij, J. W. de Fijter, and C. van Kooten. 2006. Maturation-resistant dendritic cells induce hyporesponsiveness in alloreactive CD45RA+ and CD45RO+ T-cell populations. *Am. J. Transplant.* 6: 2580–2591.
- Gerner, M. Y., and M. F. Mescher. 2009. Antigen processing and MHC-II presentation by dermal and tumor-infiltrating dendritic cells. *J. Immunol.* 182: 2726–2737.
- Zhang, Q., Y. Chen, R. L. Fairchild, P. S. Heeger, and A. Valujskikh. 2006. Lymphoid sequestration of alloreactive memory CD4 T cells promotes cardiac allograft survival. *J. Immunol.* 176: 770–777.
- Heeger, P. S., N. S. Greenspan, S. Kuhlenschmidt, C. DeJelo, D. E. Hricik, J. A. Schulak, and M. Tary-Lehmann. 1999. Pretransplant frequency of donor-specific, IFN- γ -producing lymphocytes is a manifestation of immunologic memory and correlates with the risk of posttransplant rejection episodes. *J. Immunol.* 163: 2267–2275.
- Vu, M. D., M. R. Clarkson, H. Yagita, L. A. Turka, M. H. Sayegh, and X. C. Li. 2006. Critical, but conditional, role of OX40 in memory T cell-mediated rejection. *J. Immunol.* 176: 1394–1401.
- Elyaman, W., P. Kivisäkk, J. Reddy, T. Chitnis, K. Raddassi, J. Imitola, E. Bradshaw, V. K. Kuchroo, H. Yagita, M. H. Sayegh, and S. J. Khoury. 2008. Distinct functions of autoreactive memory and effector CD4+ T cells in experimental autoimmune encephalomyelitis. *Am. J. Pathol.* 173: 411–422.
- Mirshahidi, S., C. T. Huang, and S. Sadegh-Nasseri. 2001. Anergy in peripheral memory CD4(+) T cells induced by low avidity engagement of T cell receptor. *J. Exp. Med.* 194: 719–731.
- den Boer, A. T., G. J. van Mierlo, M. F. Franssen, C. J. Melief, R. Offringa, and R. E. Toes. 2004. The tumoricidal activity of memory CD8+ T cells is hampered by persistent systemic antigen, but full functional capacity is regained in an antigen-free environment. *J. Immunol.* 172: 6074–6079.
- Diaz, G. A., and D. M. Koelle. 2006. Human CD4⁺ CD25^{high} cells suppress proliferative memory lymphocyte responses to herpes simplex virus type 2. *J. Virol.* 80: 8271–8273.
- Anderson, A. E., B. L. Sayers, M. A. Haniffa, D. J. Swan, J. Diboll, X. N. Wang, J. D. Isaacs, and C. M. Hilkens. 2008. Differential regulation of naive and memory CD4+ T cells by alternatively activated dendritic cells. *J. Leukoc. Biol.* 84: 124–133.
- Gavin, M. A., J. P. Rasmussen, J. D. Fontenot, V. Vasta, V. C. Manganiello, J. A. Beavo, and A. Y. Rudensky. 2007. Foxp3-dependent programme of regulatory T-cell differentiation. *Nature* 445: 771–775.
- Grimbert, P., S. Bouguermouh, N. Baba, T. Nakajima, Z. Allakhverdi, D. Braun, H. Saito, M. Rubio, G. Delespesse, and M. Sarfati. 2006. Thrombospondin/CD47 interaction: a pathway to generate regulatory T cells from human CD4+ CD25- T cells in response to inflammation. *J. Immunol.* 177: 3534–3541.
- Deaglio, S., K. M. Dwyer, W. Gao, D. Friedman, A. Ushveva, A. Erat, J. F. Chen, K. Enjyoji, J. Linden, M. Oukka, et al. 2007. Adenosine generation catalyzed by CD39 and CD73 expressed on regulatory T cells mediates immune suppression. *J. Exp. Med.* 204: 1257–1265.
- Zarek, P. E., C. T. Huang, E. R. Lutz, J. Kowalski, M. R. Horton, J. Linden, C. G. Drake, and J. D. Powell. 2008. A2A receptor signaling promotes peripheral tolerance by inducing T-cell anergy and the generation of adaptive regulatory T cells. *Blood* 111: 251–259.
- Mazzoni, A., V. Bronte, A. Visintin, J. H. Spitzer, E. Apolloni, P. Serafini, P. Zanollo, and D. M. Segal. 2002. Myeloid suppressor lines inhibit T cell responses by an NO-dependent mechanism. *J. Immunol.* 168: 689–695.
- Chomarat, P., J. Banchereau, J. Davoust, and A. K. Palucka. 2000. IL-6 switches the differentiation of monocytes from dendritic cells to macrophages. *Nat. Immunol.* 1: 510–514.
- Allavena, P., L. Piemonti, D. Longoni, S. Bernasconi, A. Stoppacciaro, L. Ruco, and A. Mantovani. 1998. IL-10 prevents the differentiation of monocytes to

- dendritic cells but promotes their maturation to macrophages. *Eur. J. Immunol.* 28: 359–369.
34. Kitani, A., I. Fuss, K. Nakamura, F. Kumaki, T. Usui, and W. Strober. 2003. Transforming growth factor (TGF)- β 1-producing regulatory T cells induce Smad-mediated interleukin 10 secretion that facilitates coordinated immunoregulatory activity and amelioration of TGF- β 1-mediated fibrosis. *J. Exp. Med.* 198: 1179–1188.
35. Anderson, A. E., D. J. Swan, B. L. Sayers, R. A. Harry, A. M. Patterson, A. von Delwig, J. H. Robinson, J. D. Isaacs, and C. M. U. Hilkens. 2009. LPS activation is required for migratory activity and antigen presentation by tolerogenic dendritic cells. *J. Leukoc. Biol.* 85: 243–250.
36. Suberville, S., A. Bellocq, I. Peguillet, O. Lantz, P. Stordeur, B. Fouqueray, and L. Baud. 2001. Transforming growth factor- β inhibits interleukin-10 synthesis by human monocytic cells. *Eur. Cytokine Netw.* 12: 141–146.
37. Wang, J., A. Ioan-Facsinay, E. I. van der Voort, T. W. Huizinga, and R. E. Toes. 2007. Transient expression of FOXP3 in human activated nonregulatory CD4+ T cells. *Eur. J. Immunol.* 37: 129–138.
38. Liu, W., A. L. Putnam, Z. Xu-Yu, G. L. Szot, M. R. Lee, S. Zhu, P. A. Gottlieb, P. Kapranov, T. R. Gingeras, B. Fazekas de St Groth, et al. 2006. CD127 expression inversely correlates with FoxP3 and suppressive function of human CD4+ T reg cells. *J. Exp. Med.* 203: 1701–1711.
39. Battaglia, M., S. Gregori, R. Bacchetta, and M. G. Roncarolo. 2006. Tr1 cells: from discovery to their clinical application. *Semin. Immunol.* 18: 120–127.
40. Velten, F. W., K. Duperrier, J. Bohlender, P. Metharom, and S. Goerdts. 2004. A gene signature of inhibitory MHC receptors identifies a BDCA3(+) subset of IL-10-induced dendritic cells with reduced allostimulatory capacity in vitro. *Eur. J. Immunol.* 34: 2800–2811.
41. Gray, C. P., P. Arosio, and P. Hersey. 2002. Heavy chain ferritin activates regulatory T cells by induction of changes in dendritic cells. *Blood* 99: 3326–3334.
42. Novitskiy, S. V., S. Ryzhov, R. Zaynagetdinov, A. E. Goldstein, Y. Huang, O. Y. Tikhomirov, M. R. Blackburn, I. Biaggioni, D. P. Carbone, I. Feoktistov, and M. M. Dikov. 2008. Adenosine receptors in regulation of dendritic cell differentiation and function. *Blood* 112: 1822–1831.
43. Pouliot, M., M. E. Fiset, M. Massé, P. H. Naccache, and P. Borgeat. 2002. Adenosine up-regulates cyclooxygenase-2 in human granulocytes: impact on the balance of eicosanoid generation. *J. Immunol.* 169: 5279–5286.
44. Harizi, H., and N. Gualde. 2006. Pivotal role of PGE2 and IL-10 in the cross-regulation of dendritic cell-derived inflammatory mediators. *Cell. Mol. Immunol.* 3: 271–277.
45. Beppu, R., K. Nakamura, H. Miyajima-Uchida, M. Kuroki, P. D. Khare, Y. Yamauchi, Y. Yamashita, T. Shirakusa, and M. Kuroki. 2001. Soluble thrombospondin-1 suppresses T cell proliferation and enhances IL-10 secretion by antigen presenting cells stimulated with phytohemagglutinin. *Immunol. Invest.* 30: 143–156.
46. Doyen, V., M. Rubio, D. Braun, T. Nakajima, J. Abe, H. Saito, G. Delespesse, and M. Sarfati. 2003. Thrombospondin 1 is an autocrine negative regulator of human dendritic cell activation. *J. Exp. Med.* 198: 1277–1283.
47. Chamuleau, M. E. D., Y. Souwer, S. M. Van Ham, A. Zevenbergen, T. M. Westers, J. Berkhof, C. J. L. M. Meijer, A. A. van de Loosdrecht, and G. J. Ossenkoppele. 2004. Class II-associated invariant chain peptide expression on myeloid leukemic blasts predicts poor clinical outcome. *Cancer Res.* 64: 5546–5550.
48. Glazier, K. S., S. B. Hake, H. M. Tobin, A. Chadburn, E. J. Schattner, and L. K. Denzin. 2002. Germinal center B cells regulate their capability to present antigen by modulation of HLA-DO. *J. Exp. Med.* 195: 1063–1069.
49. Röhn, T. A., M. Boes, D. Wolters, S. Spindeldreher, B. Müller, H. Langen, H. Ploegh, A. B. Vogt, and H. Kropshofer. 2004. Upregulation of the CLIP self peptide on mature dendritic cells antagonizes T helper type 1 polarization. *Nat. Immunol.* 5: 909–918.
50. Hornell, T. M., T. Burster, F. L. Jahnsen, A. Pashine, M. T. Ochoa, J. J. Harding, C. Macaubas, A. W. Lee, R. L. Modlin, and E. D. Mellins. 2006. Human dendritic cell expression of HLA-DO is subset specific and regulated by maturation. *J. Immunol.* 176: 3536–3547.