



AAI Courses in Immunology

The American Association of Immunologists

2007 Introductory Course in Immunology

June 22 - 28, 2007

The University of Pennsylvania, Philadelphia, PA

Course Director: Terri M. Laufer, M.D., University of Pennsylvania School of Medicine

This two-part course will give students the tools necessary to understand and discuss current topics and methods in the field of immunology. Part I is a comprehensive introduction to the basic principles of immunology and is suitable for students with a general biology background. Part II is a lecture course covering major areas of immunology and requires an understanding of basic immunology. Parts I and II may be taken independently at the discretion of the student. 38 Continuing Medical Education (CME) Category I credits are offered.* Minority Access to Research Careers (MARC) travel awards are available to US citizens and permanent residents.

Attendance is limited to 200 registrants.

The American Association of Immunologists

2007 Advanced Course in Immunology

New Venue!

August 4 - 10, 2007

The University of Minnesota, Minneapolis, MN

Course Director: Marc K. Jenkins, Ph.D., University of Minnesota

This intensive course is designed for serious students of immunology. Leading experts will present recent advances in understanding the biology of the immune system and its role in health and disease. This course is directed toward advanced trainees and scientists who wish to expand or update their understanding of the field. This is not a survey course and requires that attendees have a firm understanding of the principles of immunology. 43 Continuing Medical Education (CME) Category I credits are offered.* Minority Access to Research Careers (MARC) travel awards are available to US citizens and permanent residents.

Attendance is limited to 220 registrants.

FOR INFORMATION, COURSE OUTLINES, AND REGISTRATION, VISIT:

www.aai.org/Courses.htm

For questions or assistance in registering, contact aaioffice@aai.org or **301-634-7178**.

Overseas applicants are advised to apply early for visas.

* This activity has been planned and implemented in accordance with the Essential Areas and Policies of the Accreditation Council for Continuing Medical Education (ACCME) through the joint sponsorship of the Federation of American Societies for Experimental Biology (FASEB) and the AAI. FASEB is accredited by the ACCME to provide CME for physicians. FASEB designates this educational activity for the designated number of credit hours in category 1 credit towards the AMA Physician's Recognition Award. Number of hours is subject to change.



Request For Proposals

**Pfizer Is Seeking Research Partners
To Solve Some Of Its Key Translational
Research Problems.**

**PROBLEM: IDENTIFICATION OF GENE EXPRESSION
BIOMARKERS OF CLINICAL OUTCOMES
IN RHEUMATOID ARTHRITIS**

Do you share this research interest?

- Want to learn more about Pfizer's specific goals in this area?
- Have an idea how to solve this problem?
- Have access to appropriate facilities, technologies and patients?

To learn more about this opportunity please visit
www.pfizer.com/TranslationalMedicine



IMMUNOLOGY



THE
JOURNAL
OF

Need to Recruit?

Recruiting through *The Journal of Immunology* is the most economical way to reach the immunology community without wasting money. Why pay more to reach geologists and physicists when you are seeking immunologists?

A quarter-page advertisement costs \$815.

For further information, contact:

Steve West

Professional Media Group (PMG)

856-795-5777

steve@promedgroup.net

IMMUNOLOGY



THE
JOURNAL
OF

SPEND MORE TIME ON SCIENCE AND LESS TIME ONLINE

You have better things to do than spend hours submitting and tracking manuscripts.

The JI's new online manuscript submission and peer-review system is designed to make manuscript submission seamless for authors and peer review simple for reviewers.

SUBMIT IN A SNAP!

Try our easy 4-step submission process.

Fast
Efficient
Easy to use

<http://ji.msubmit.net>



THE JOURNAL OF IMMUNOLOGY

Published by The American Association of Immunologists since 1916



*If you don't know what's in The JI,
then you don't know what's going on in immunology.*



The JI is the 15th most cited journal of all 6,088 scientific journals.

- ISI Science Citation Index, 2005 (Journal Citation Reports)

The JI is the definitive record for research progress in immunology. Original peer-reviewed articles reporting studies in basic and clinical immunology include:



- ◆ Cutting Edge (Rapid Communication)
- ◆ Cellular Immunology
and Immune Regulation
- ◆ Molecular and Structural Immunology
- ◆ Immunogenetics
- ◆ Host Defense
- ◆ Inflammation
- ◆ Clinical Immunology

and SPECIAL SECTIONS

- ◆ In This Issue
- ◆ Letters to the Editor
- ◆ Pillars of Immunology
- ◆ Brief Reviews

Editor-in-Chief
Robert R. Rich, M.D.

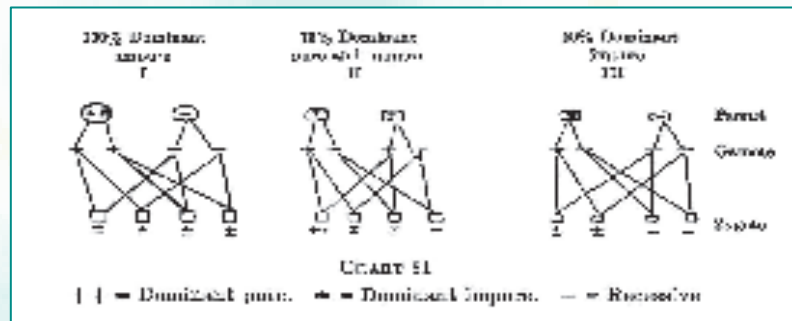
Executive Director, AAI/Managing Editor
M. Michele Hogan, Ph.D.

Visit us on the Web for the latest in immunology.

www.jimmunol.org

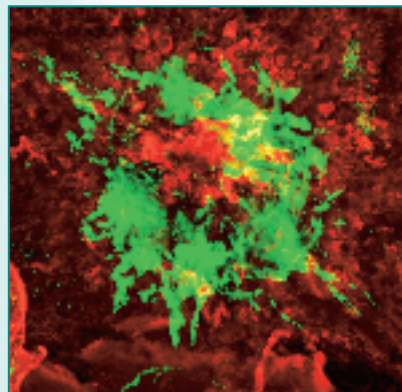
THE JOURNAL OF IMMUNOLOGY

FROM
1916...



Cooke, R. A., and Vander Veer, Jr., A. 1916. Human sensitization.
J. Immunol. 1: 201-305.

...TO 2007
AND BEYOND!



Bora et al., 2007. CD59, a complement regulatory protein, controls choroidal neovascularization in a mouse model of wet-type age-related macular degeneration. *J. Immunol.* 178: 1783-1790.

NOW AVAILABLE ONLINE!
THE ENTIRE LEGACY OF
THE JOURNAL OF IMMUNOLOGY

SUBSCRIBERS WITH ONLINE BENEFITS MAY NOW ACCESS A
COMPREHENSIVE RECORD OF IMPORTANT DISCOVERIES IN THE
FIELD OF IMMUNOLOGY FROM 1916-2007!

SUBSCRIPTION INFORMATION:
WWW.JIMMUNOL.ORG/SUBSCRIPTIONS