

## NEW Biosimilar Antibodies

PD-1 | Nivolumab Biosimilar  
PD-L1 | Atezolizumab Biosimilar  
CTLA-4 | Ipilimumab Biosimilar  
and more

DISCOVER

BioCell



## Detailed analysis of intrahepatic CD8 T cells in the normal and hepatitis C-infected liver reveals differences in specific populations of memory cells with distinct homing phenotypes

This information is current as of January 26, 2022.

M. Heydtmann, D. Hardie, P. L. Shields, J. Faint, C. D. Buckley, J. J. Campbell, M. Salmon and D. H. Adams

*J Immunol* 2006; 177:2729; ;

doi: 10.4049/jimmunol.177.4.2729-a

<http://www.jimmunol.org/content/177/4/2729.2>

### Why *The JI*? [Submit online.](#)

- **Rapid Reviews! 30 days\*** from submission to initial decision
- **No Triage!** Every submission reviewed by practicing scientists
- **Fast Publication!** 4 weeks from acceptance to publication

*\*average*

**Subscription** Information about subscribing to *The Journal of Immunology* is online at: <http://jimmunol.org/subscription>

**Permissions** Submit copyright permission requests at: <http://www.aai.org/About/Publications/JI/copyright.html>

**Email Alerts** Receive free email-alerts when new articles cite this article. Sign up at: <http://jimmunol.org/alerts>

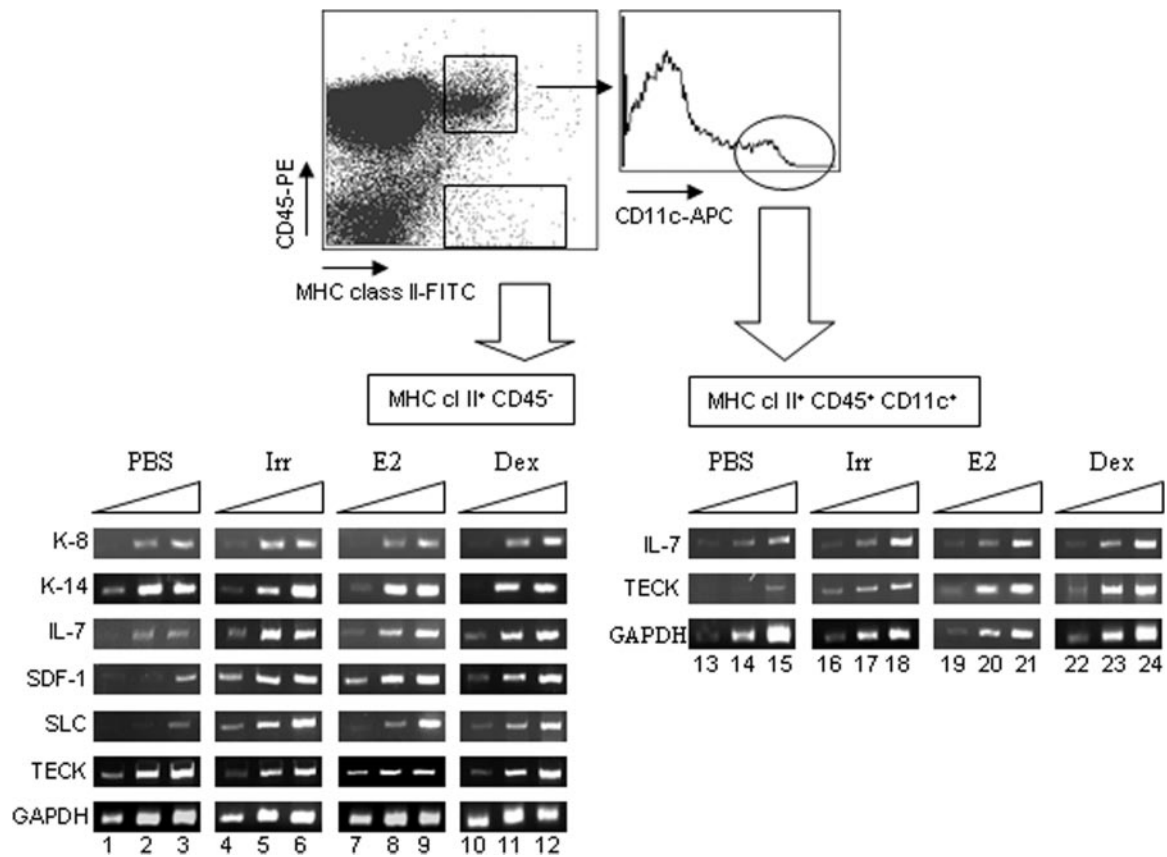
*The Journal of Immunology* is published twice each month by  
The American Association of Immunologists, Inc.,  
1451 Rockville Pike, Suite 650, Rockville, MD 20852  
Copyright © 2006 by The American Association of  
Immunologists All rights reserved.  
Print ISSN: 0022-1767 Online ISSN: 1550-6606.



# CORRECTIONS

Zubkova, I., H. Mostowski, and M. Zaitseva. 2005. Up-regulation of IL-7, stromal-derived factor-1 $\alpha$ , thymus-expressed chemokine, and secondary lymphoid tissue chemokine gene expression in the stromal cells in response to thymocyte depletion: implication for thymus reconstitution. *J. Immunol.* 175: 2321–2330.

In Figure 8, panels for K-14 (E2 and Dex), IL-7 (E2), SLC (E2), TECK (E2), and GAPDH (Irr) mRNA expression in TEC, and for TECK (E2) and GAPDH (E2) mRNA expression in DCs were incorrect. The corrected figure is shown below.



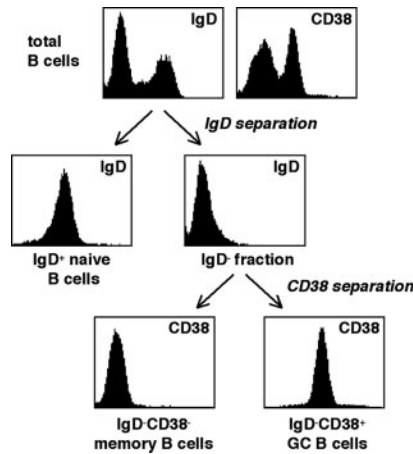
Uttenreuther-Fischer, M. M., J. A. Krüger, and P. Fischer. 2006. Molecular characterization of the anti-idiotypic immune response of a relapse-free neuroblastoma patient following antibody therapy: a possible vaccine against tumors of neuroectodermal origin? *J. Immunol.* 176: 7775–7786.

In the **Abstract**, reference to CD3-positive tumors in the last sentence is incorrect. The corrected sentence is shown below.

GK8 may be useful as a tumor vaccine for GD2-positive tumors.

Larousserie, F., P. Charlot, E. Bardel, J. Froger, R. A. Kastelein, and O. Devergne. 2006. Differential effects of IL-27 on human B cell subsets. *J. Immunol.* 176: 5890–5897.

At the bottom of Figure 1, the legends of the two graphs for “CD38 separation” are reversed: “IgD<sup>-</sup>CD38<sup>+</sup> GC B cells” should be under the graph at the right and “IgD<sup>-</sup>CD38<sup>-</sup> memory B cells” should be under the graph at the left. The corrected figure is shown below.



Heydtmann, M., D. Hardie, P. L. Shields, J. Faint, C. D. Buckley, J. J. Campbell, M. Salmon, and D. H. Adams. 2006. Detailed analysis of intrahepatic CD8 T cells in the normal and hepatitis C-infected liver reveals differences in specific populations of memory cells with distinct homing phenotypes. *J. Immunol.* 177: 729–738.

Figure 4 was published in black and white in error. The corrected figure is shown below. The error has been corrected in the online version, which now differs from the print version as originally published.

