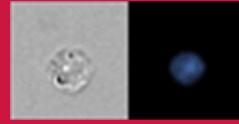


View your cells with clarity:

Amnis® FlowSight® Imaging Flow Cytometer

Learn More >

For Research Use Only. Not for use in diagnostic procedures.



Luminex

complexity simplified.



T Cell Requirement for Development of Chronic Ulcerative Dermatitis in E- and P-Selectin-Deficient Mice

This information is current as of May 19, 2022.

S. Bradley Forlow, E. James White, Kennard L. Thomas, Gregory J. Bagby, Patricia L. Foley and Klaus Ley

J Immunol 2003; 170:643; ;

doi: 10.4049/jimmunol.170.1.643-a

<http://www.jimmunol.org/content/170/1/643.2>

Why *The JI*? [Submit online.](#)

- **Rapid Reviews! 30 days*** from submission to initial decision
- **No Triage!** Every submission reviewed by practicing scientists
- **Fast Publication!** 4 weeks from acceptance to publication

**average*

Subscription Information about subscribing to *The Journal of Immunology* is online at: <http://jimmunol.org/subscription>

Permissions Submit copyright permission requests at: <http://www.aai.org/About/Publications/JI/copyright.html>

Email Alerts Receive free email-alerts when new articles cite this article. Sign up at: <http://jimmunol.org/alerts>

The Journal of Immunology is published twice each month by The American Association of Immunologists, Inc., 1451 Rockville Pike, Suite 650, Rockville, MD 20852
Copyright © 2003 by The American Association of Immunologists All rights reserved.
Print ISSN: 0022-1767 Online ISSN: 1550-6606.



CORRECTIONS

Peter J. Chefalo and Clifford V. Harding. Processing of Exogenous Antigens for Presentation by Class I MHC Molecules Involves Post-Golgi Peptide Exchange Influenced by Peptide-MHC Complex Stability and Acidic pH. *The Journal of Immunology* 2001;167:1274–1282.

An error was made in describing the protocol used for experiments shown in Figs. 5, 6, and 7. Text in the *Materials and Methods* and *Results* sections, along with figure legends for Figs. 5, 6, and 7 implied that antigenic readout peptide was only added subsequent to the incubation of macrophages in citrate-buffered saline at varying pH, but peptide was actually added at the indicated concentrations both during the incubation in citrate-buffered saline at varying pH and in the subsequent incubation for 2 h in normal medium. This correction does not change the conclusion of the paper, but is important for executing future studies.

S. Bradley Forlow, E. James White, Kennard L. Thomas, Gregory J. Bagby, Patricia L. Foley, and Klaus Ley. T Cell Requirement for Development of Chronic Ulcerative Dermatitis in E- and P-Selectin-Deficient Mice. *The Journal of Immunology* 2002;169:4797–4804.

In Fig. 1A, the last lane in the *lower right panel* was misplaced. It should have appeared as the first lane in the *left side* of the *lower panel*. The corrected figure is shown below.

