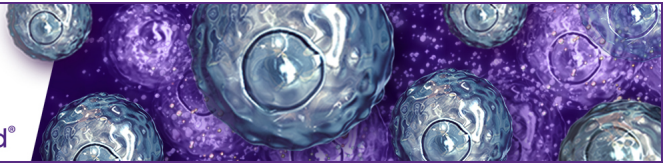


T Helper Cell Cytokines Modeled by the Rat

Read our blog ►



117 (4)

J Immunol 1976; 117:1063-1410; ;
<http://www.jimmunol.org/content/117/4.citation>

This information is current as of September 28, 2022.

Why *The JI*? [Submit online.](#)

- **Rapid Reviews! 30 days*** from submission to initial decision
- **No Triage!** Every submission reviewed by practicing scientists
- **Fast Publication!** 4 weeks from acceptance to publication

**average*

Subscription Information about subscribing to *The Journal of Immunology* is online at: <http://jimmunol.org/subscription>

Permissions Submit copyright permission requests at: <http://www.aai.org/About/Publications/JI/copyright.html>

Email Alerts Receive free email-alerts when new articles cite this article. Sign up at: <http://jimmunol.org/alerts>



THE JOURNAL OF IMMUNOLOGY®

Contents for October

CELLULAR IMMUNOLOGY

- 1063 **The Suppressive Effect of Interferon on the Ability of Mouse Spleen Cells Synthesizing IgE to Sensitize Rat Skin for Heterologous Adoptive Cutaneous Anaphylaxis.** *Johnson Ngan, Spencer H. S. Lee, and Leon S. Kind*
- 1067 **Characterization of T and B Antigen-Binding Cells for β -Galactosidase. III. Independence of Antigen-Binding Cells in Normal Animals from Antigenic Stimulation.** *Susan Swain and Albert H. Coons*
- 1073 **Effects of C-Reactive Protein on Platelet Function. II. Inhibition by CRP of Platelet Reactivities Stimulated by Poly-L-Lysine, ADP, Epinephrine, and Collagen.** *Barry A. Fiedel and Henry Gewurz*
- 1093 **Age-Associated Decline in the in Vitro Development of Cytotoxic Lymphocytes in NZB Mice.** *Toshio Hirano and Albert A. Nordin*
- 1099 **Appearance of Functional Lymphocytes in Fetal Liver.** *R. A. Phillips and F. Melchers*
- 1111 **Immunologic Cross-Reactions between the Specifically Localizing Cells (SLC) Generated in Response to Sheep RBC and the Red Cells of Other Species.** *Donald R. Thursh and Keith S. Chan*
- 1132 **Coexistence of Helper and Suppressor Activities in Carrier-Primed Spleen Cells.** *Eva L. Chan and Claudia Henry*
- 1152 **Specific, Transient Suppression of the Immune Response by HGG Tolerant Spleen Cells. II. Effector Cells and Target Cells.** *Michael V. Doyle, D. Elliot Parks, and William O. Weigle*
- 1159 **Early and Late Contact Sensitivity Reactions in Guinea Pigs Sensitized to Oxazolone.** *Harold Baer, Sanford H. Stone, and Frank Malik*
- 1179 **Differences in Ultrastructural Appearance and Modulation of Endogenous and Exogenous Surface Immunoglobulin of Rabbit Lymphocytes.** *D. Scott Linthicum, Raja M. Bahu, and Stewart Sell*
- 1211 **Reaginic Antibody Formation in the Mouse. VIII. Depression of the Ongoing IgE Antibody Formation by Suppressor T Cells.** *Kiyoshi Takatsu and Kimishige Ishizaka*
- 1219 **Differences in the Age-Dependent Release of a Low Molecular Weight Suppressor (LMWS) and Stimulators by Normal and NZB/W Lymphoid Organs.** *David F. Ranney and Alfred D. Steinberg*
- 1226 **A Galactose-Inhibitable Mitogen for Human Lymphocytes from the Sponge *Axinella* polypoides.** *Stephanie Gordon Phillips, Hagen Bretting, and Elvin A. Kabat*
- 1233 **Functional Heterogeneity among the T-Derived Lymphocytes of the Mouse. V. Response Kinetics of Peripheral T Cell Subpopulations.** *Barbara A. Araneo, Philippa C. Marrack, and John W. Kappler*
- 1275 **Mechanism of the Growth-Promoting Effect of Serum Albumin on Concanavalin A-Activated Lymphocytes: Protective Effect of the Plasma Proteins.** *Herman Polet and Helga Spieker-Polet*
- 1288 **Maturation of B Lymphocytes in Rats. III. Two Subpopulations of Memory B Cells in the Thoracic Duct Lymph Differ by Size, Turnover Rate, and Surface Immunoglobulin.** *Samuel Strober*
- 1308 **Nucleoside Specificity in the Carrier IgG-Dependent Induction of Tolerance.** *B. David Stollar and Yves Borel*
- 1314 **Quantitative Analysis of the Proliferative Activity Induced in Murine Thymocytes by Concanavalin A.** *Stanley Gerhart, Gordon Mills, Vicky Monticone, and Verner Paetkau*
- 1320 **Proliferation of Murine Thymic Lymphocytes in Vitro Is Mediated by the Concanavalin A-Induced Release of a Lymphokine (Costimulator).** *Verner Paetkau, Gordon Mills, Stanley Gerhart, and Vicky Monticone*
- 1325 **The Role of Macrophages in Thymocyte Mitogenesis.** *Gordon Mills, Vicky Monticone, and Verner Paetkau*
- 1336 **Mitogen-Stimulated Glutaraldehyde-Fixed Spleen Cells: Ability to Stimulate in the Mixed Lymphocyte Reaction and Generate Effector Cells in Cell-Mediated Lympholysis.** *James L. Lightbody and Yi-chi M. Kong*
- 1370 **Regulatory Effect of Interferon on T Cells in Vitro.** *Iver Heron, Kurt Berg, and Kari Cantell*

CLINICAL IMMUNOLOGY

- 1139 **The Metabolism of IgE; Studies in Normal Individuals and in a Patient with IgE Myeloma.** *Thomas A. Waldmann, Atsushi Iio, Makio Ogawa, O. Ross McIntyre, and Warren Strober*
- 1303 **Chemotactic and Bactericidal Capacities of Human Newborn Monocytes.** *Roberto R. Kretschmer, Prudence B. Stewardson, Cynthia K. Papierniak, and Samuel P. Gotoff*

IMMUNOCHEMISTRY

- 1117 **Leukocyte-Derived Complement Inhibitor. IV. The Functional Properties of $C\bar{1}$ Bound to Erythrocytes Pretreated with Leukocyte Culture Supernatant.** *Alain Bernard, William Walter, Hideki Teshima, Laurence Boumsell, Robert A. Good, and Noorbibi K. Day*

- 1189 **Cross-Reactions between 2,4-Dinitrophenyl and Menadione (Vitamin K₃) and the General Problem of Antibody Specificity.** *Marilyn F. M. Johnston and Herman N. Eisen*
- 1256 **Activation of the Alternative Complement Pathway by Water-Insoluble Glucans of *Streptococcus mutans*: The Relation between Their Chemical Structures and Activating Potencies.** *Shinya Inai, Kazuyoshi Nagaki, Shigeyuki Ebisu, Keijiro Kato, Shozo Kotani, and Akira Misaki*
- 1374 **Solubilization of IgA Immune Precipitates by Complement.** *Gary W. Miller*
- 1387 **Comparison of the Inactivation of IgM and IgG Complement Fixation Sites by Acid and Base.** *B. David Stollar, Miguel J. Stadecker, and Shoshana Morecki*

IMMUNOGENICS AND TRANSPLANTATION

- 1079 **Genetic Control of the Immune Response in Rats to the Known Sequential Polypeptide, (Tyr-Glu-Ala-Gly)_n. I. Antibody Responses.** *Albert A. Luderer, Paul H. Maurer, and Robert T. Woodland*
- 1197 **Distinct Target Determinants on Two Lymphoblastoid Lines Derived from the Same Individual.** *Yukio Koide and Mitsuo Takasugi*
- 1261 **Macrophage-Lymphocyte Interaction. III. Site of Alloantiserum Inhibition of T Lymphocyte Proliferation Induced by Allogeneic or Aldehyde-Bearing Cells.** *Dirk K. Greineder, Ethan M. Shevach, and Alan S. Rosenthal*
- 1295 **Mixed Lymphocyte Reactions: Augmentation by Drugs That Inhibit Stimulator Cell Protein Synthesis.** *Charles M. Metzler, Thomas G. Kostyk, and Richard K. Gershon*
- 1300 **B Lymphocyte Alloantigen Specificities Present on Cultured Lymphoblastoid Cell Lines.** *R. Honig, R. Billing, M. Matsuyama, and P. I. Terasaki*
- 1351 **Characterization of Ia Antigens in Mouse Serum.** *Gerald N. Callahan, Soldano Ferrone, M. David Poulík, Ralph A. Reisfeld, and Jan Klein*
- 1363 **In Vitro Responses of CBA/N Mice: Spleen Cells of Mice with an X-Linked Defect That Precludes Immune Responses to Several Thymus-Independent Antigens Can Respond to TNP-Lipopolysaccharide.** *D. E. Mosier, I. Scher, and W. E. Paul*

IMMUNOPATHOLOGY

- 1085 **Metabolic Studies of Guinea Pig Basophilic Leukocytes in Short-Term Tissue Culture. I. Measurement of Histamine-Synthesizing Capacity by Using an Isotopic-Thin Layer Chromatographic Assay.** *Stephen J. Galli, Anne S. Galli, Ann M. Dvorak, and Harold F. Dvorak*
- 1164 **Perturbation of Lymphocyte Circulation in Experimental Murine Leprosy. I. Description of the Defect.** *Ward E. Bullock, Jr.*
- 1171 **Perturbation of Lymphocyte Circulation in Experimental Murine Leprosy. II. Nature of the Defect.** *Ward E. Bullock, Jr.*
- 1203 **Demonstration of Human Nephritogenic Tubular Antigen in the Serum and Organs by Radioimmunoassay.** *Yuzo Miyakawa, Kiyoshi Kitamura, Seiichi Shibata, and Takuji Naruse*
- 1238 **Comparison of the Pyrogenicity, Limulus Activity, Mitogenicity, and Complement Reactivity of Several Bacterial Endotoxins and Related Compounds.** *Ronald J. Elin, Ann L. Sandberg, and David L. Rosenstreich*
- 1282 **Independent Effects of IgG and Complement upon Human Polymorphonuclear Leukocyte Function.** *Ira M. Goldstein, Howard B. Kaplan, Allen Radin, and Matthew Frosch*
- 1356 **Release of Chemical Mediators from Partially Purified Human Lung Mast Cells.** *Nigel A. M. Paterson, Stephen I. Wasserman, Jonathan W. Said, and K. Frank Austen*
- 1378 **Generation of a Neutrophil Chemotactic Agent by Spermatozoa: Role of Complement and Regulation by Seminal Plasma Factors.** *Robert A. Clark and Seymour J. Klebanoff*

TUMOR IMMUNOLOGY

- 1145 **Inhibition of Normal Allogenic Lymphocyte Mitogenesis by a Soluble Inhibitor Extracted from Human Colonic Carcinoma.** *Maryse M. Remacle-Bonnet, Gilbert J. Pommier, Solange Kaplanski, Roselyne J. Rance, and Raymond C. Depieds*
- 1243 **Depression of Macrophage Function by a Factor Produced by Neoplasms: A Mechanism for Abrogation of Immune Surveillance.** *Marilyn C. Pike and Ralph Snyderman*
- 1267 **Characterization of Ia8 Antigen, Thy-1.2 Antigen, Complement Receptors, and Virus Production in a Group of Murine Virus-Induced Leukemia Cell Lines.** *Bruce Chesebro, Kathy Wehrly, Kevin Chesebro, and John Portis*
- 1331 **Reversal of Cell Surface Abnormalities of T Lymphocytes in Hodgkin's Disease after in Vitro Incubation in Fetal Sera.** *Zvi Fuks, Samuel Strober, Donna P. King, and Henry S. Kaplan*
- 1340 **Nonspecific Inhibition of Tumor Growth in Vivo by Admixed Allogeneic Tumor-Sensitized Lymphoid Cells and Identical Inactivated Allogeneic Tumor Cells.** *F. Sendo, M. Nakayama, E. Gotohda, and H. Kobayashi*
- 1346 **Lysis of Tumor Cells by Antibody and Complement. VII. Complement-Dependent⁶⁶Rb Release—A Nonlethal Event?** *Michael D. P. Boyle, Sarkis H. Ohanian, and Tibor Borsos*

Continued on page 8

Continued from page 3

VIRAL AND MICROBIAL IMMUNOLOGY

- 1104 **Virus-Enhanced Modulation of Cell Surface Antigens: Effect on Immune Lytic Susceptibility.** Phillip J. Catanzaro, Walter E. Brandt, Wayne R. Hogrefe, Stanley M. Phillips, and Franklin H. Top, Jr.
- 1127 **Hypergammaglobulinemia in Chickens Congenitally Infected with an Avian Leukosis Virus.** Louis F. Qualtiere and Paul Meyers
- 1250 **Xenogenization of Rat Erythroid Cells by Lymphatic Leukemia Virus: Its Role in Induction of Auto-immune Hemolytic Anemia.** Noboru Kuzumaki, Tetsuya Moriuchi, Takao Kodama, and Hiroshi Kobayashi
- 1392 **Large-Scale Isolation of Dane Particles from Plasma Containing Hepatitis B Antigen and Demonstration of a Circular Double-Stranded DNA Molecule Extruding Directly from Their Cores.** Takashi Takahashi, Susumu Nakagawa, Takashi Hashimoto, Kazuaki Takahashi, Mitsunobu Imai, Yuzo Miyakawa, and Makoto Mayumi
- 1398 **Primary in Vitro Sensitization of Murine Lymphocytes against Isogeneic and Allogeneic Cells Transformed by Simian Virus 40.** Takashi Maki and Michael L. Howe

COMMUNICATIONS

- 1402 **Autologous Human Cellular Cytotoxicity Induced by Mitogenic and Nonmitogenic Lectins.** Richard P. MacDermott, Geoffrey S. Nash, John G. Saint, Eloise A. Clark, Alexander G. Zaras, and David Boldt
- 1404 **Characterization of Antibodies to the Structural Polypeptides of HB_sAG: Evidence for Subtype-Specific Determinants.** Jon W. M. Gold, J. Wai-Kuo Shih, Robert H. Purcell, and John L. Gerin
- 1406 **Partial Separation of Human Blood Leukocytes by Density Gradient Electrophoresis: Different Mobilities of Lymphocytes with IgG, Those with IgM and IgD, T Lymphocytes, and Monocytes.** Kenneth A. Ault, Ann L. Griffith, Christos D. Platsoucas, and Nicholas Catsimpoolas
- 1409 **Announcements**
- 1410 **Erratum**
- 1411 **Author Index**

THE JOURNAL OF IMMUNOLOGY®

Information for Subscribers

Published monthly, beginning January, 1929. (From 1916 to 1925, and in 1928 Volumes I-X inclusive, and Vol. XV published bi-monthly.)

Annual Subscription Rates—U.S.A. AND POSSESSIONS: personal, \$80.00; institutional, \$100.00; single copy, \$9.00. **FOREIGN:** personal, \$85.00; institutional, \$105.00; single copy, \$9.50. Institutional (multiple reader) rate applies to libraries, schools, hospitals, clinics, group practices, and federal, commercial, and private institutions and organizations. A special rate of \$27.00 (\$32.00 foreign) is available to Students and Post-Doctoral Fellows. Certification forms may be obtained from the office of the American Association of Immunologists in Bethesda. The subscriptions of members of the American Association of Immunologists are included in the membership dues and are handled by the Association's Treasurer. Dr. Henry Metzger, American Association of Immunologists, 9650 Rockville Pike, Bethesda, Md. 20014. All other subscriptions should be sent to the publishers.

Change of address: Publisher must be notified 60 days in advance. Journals undeliverable because of incorrect address will be destroyed. Duplicates can be obtained (if available) from the publisher at the regular price of single issues.

New subscriptions and renewals are entered to begin with the January or July issue.

Subscriptions should be renewed promptly: To avoid a break in your series, subscriptions should be renewed promptly. The publishers cannot guarantee to supply back issues on belated renewals.

Microfilm. For availability, inquire of The Williams & Wilkins Company.

Reprints of individual articles are available only from authors.

THE WILLIAMS & WILKINS COMPANY

BALTIMORE, MARYLAND 21202 U. S. A.