



Our new housing development.

Upwards and onwards with the needs of research.

As the demand for lab animals grows in the fields of cancer and arthritis research, toxicology and many other areas—so must grow our facilities.

We've expanded our COBS® breeding area 33,000 square feet. A gleaming new home for our rabbits and additional room for mice and rat production. And not only does our growth continue, we remain the most up-to-date breeding laboratory in the world.

Our new COBS rooms utilize recently developed automated equipment. In order to provide quality animals at a competitive price. Our barrier system continues to be updated to insure uniform, superior animals.

If you'd like further information about any strain of our rats, mice or rabbits, write or call (617) 658-3333.

Building better animals is what we do best.

Charles River  FROM THE
HAND OF THE
VETERINARIAN
TO RESEARCH
BREEDING LABORATORIES, INC.
WILMINGTON, MASSACHUSETTS 01887

Series Haematologica

Vol. III, 3, 1970

Rh Immunisation and its Prevention

By **J. C. Woodrow**

Nuffield Unit of Medical Genetics

Department of Medicine

Liverpool University

1970/151 pp./30 tables/\$13.00

This monograph describes the process of Rh immunisation by pregnancy and factors which appear to influence it. Observations on foeto-maternal transfusion during pregnancy are critically reviewed. The general immunological background to immunosuppression by specific antibodies, and several other problems are discussed.

Vol. III, 4, 1970

Vol. IV, 1, 1971

The Biochemical and Physiological Functions of the Platelets.

I: Membranes and Aggregation

II: Metabolism and Protein

Edited by **Kaj Gert Jensen** and **Sven-Aage Killmann**

I 1970/129 pp./illustrated/\$14.00

II 1971/185 pp./illustrated/\$14.00

Proceedings of the 1st International Symposium held at the Rush-Presbyterian St. Lukes Medical Center, Chicago, October 1970. Chairman: **Francois M. Booyse**

Williams & Wilkins

428 E. Preston St.

Baltimore, Md. 21202



Kohn electrophoresis unit is 6 units in 1

Here's real versatility. The Shandon Electrophoresis Apparatus after Kohn—designed for maximum flexibility, convenience and economy—easily performs these six techniques: (1) **Cellulose Acetate** . . . with a range of bridge gaps from 1 cm to 21 cm in 1 mm steps you get unrivaled economy with expensive media . . . unit is ideal for large-scale, small-scale and micro techniques, also short distance HVE; (2) **Starch, Agar and Polyacrylamide Gels** . . . for superb resolution . . . and for immuno techniques; (3) **Paper** . . . outstanding simplicity and convenience on all runs; (4) **Micro-immuno and Crossed-over Techniques** . . . no need to improvise, special accessories do the job with no trouble; (5) **Thin Layer (TLE)** . . . real advantages in many types of separation . . . fast set-up time, fine results; (6) **Cooled Platen Work** . . . for separations at higher voltages . . . avoid denaturation of sample . . . ideal for enzyme work. Send for catalog U77, that details all of the advantages and accessories of this versatile apparatus, to Shandon Scientific Company, Inc., 515 Broad Street, Sewickley, Pa. 15143.



SHANDON

PITTSBURGH • LONDON • FRANKFURT

**Use this
check list for
other Shandon
Catalogs and
Monographs**

- Paper Electrophoresis
- Acrylamide Gel Electrophoresis
- Immuno Electrophoresis
- Thin Layer Electrophoresis
- High Voltage Electrophoresis
- Paper Chromatography
- Thin Layer Chromatography
- Preparative Layer Chromatography
- Automatic Slide Staining Machine
- Tissue Processing Apparatus
- Cyto-Centrifuge

Please send your request for the above literature to Shandon Scientific Company, Inc., 515 Broad Street, Sewickley, Pa. 15143.

Is killing time the big crime in your lab?

Running out of needed biochemicals while research is in progress can hold up a vital project. Rob you of valuable time (and temper). And the long wait for delivery of the essential items can be murder.

It's a crime to kill time when help is as close as a call to NBCo.

When you phone with an order, we guarantee shipment within 60 minutes. But only after we've checked it five times for accuracy. Then, we'll follow through with speed-demon delivery that'll have your order, if you wish, in your hands in just 24 hours, anywhere in the United States. Or, we'll come through for you anywhere in the world in just 80 hours.

But speed is only part of the service. We're very big on quality at NBCo. Because we're first in the biochemical field, we offer you the most complete stock of the newest, finest laboratory chemicals. And because we're big, our prices can be pleasantly small.

Next time you see a lab hold-up about to happen, foil it fast. Phone your order (collect, if you like, in the U.S.A.) to us. We'll fill it fast.

Please send
the NBCo. information
which I have checked below to

Name _____

Co. Name _____

Address _____

City _____ State _____ Zip _____

- Enzyme Manual Diets Manual
 Biochemicals Catalog

**NUTRITIONAL
BIOCHEMICALS
CORPORATION**

26201 Miles Rd., Cleveland, Ohio 44128
Phone 216 662-0212

THE AMERICAN ASSOCIATION OF IMMUNOLOGISTS

OFFICERS

Frank J. Dixon, *President*
La Jolla, Calif.

Dan H. Campbell, *Vice President*
Pasadena, Calif.

Henry Metzger, *Secretary-Treasurer*
American Association of Immunologists
9650 Rockville Pike
Bethesda, Maryland 20014

COUNCILLORS

Baruj Benacerraf
Boston, Mass.

Robert A. Good
Minneapolis, Minn.

Henry G. Kunkel
New York, N. Y.

Manfred Mayer
Baltimore, Md.

Joseph D. Feldman
La Jolla, Calif.

THE JOURNAL OF IMMUNOLOGY[®]

Editor-in-Chief

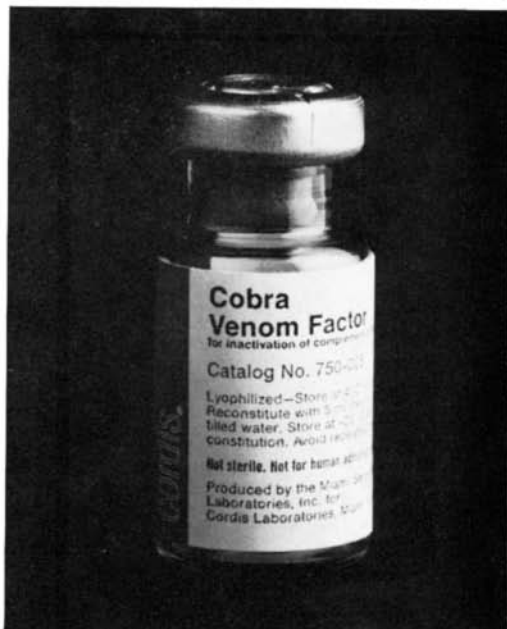
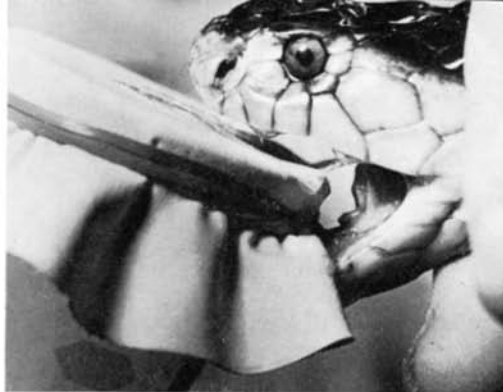
DR. JOSEPH D. FELDMAN
Department of Experimental Pathology
Scripps Clinic and Research Foundation
La Jolla, California 92037

Editorial Board

MERRILL W. CHASE (1971) New York	ELVIN A. KABAT (1973) New York
EDWIN H. LENNETTE (1971) Berkeley	BYRON H. WAKSMAN (1974) New Haven

Associate Editors

FRANK L. ADLER (1974) New York	SHELDON DRAY (1971) Chicago	ALFRED NISONOFF (1973) Chicago
K. FRANK AUSTEN (1973) Boston	HERMAN N. EISEN (1974) St. Louis	ABRAHAM G. OSLER (1971) New York
ELMER L. BECKER (1973) Hartford	H. HUGH FUDENBERG (1971) San Francisco	DAVID PRESSMAN (1972) Buffalo
SAM M. BEISER (1971) New York	KARL HABEL (1971) La Jolla	FRED RAPP (1974) Hershey
BARUJ BENACERRAF (1972) Boston	CALDERON HOWE (1974) New York	SAMUEL B. SALVIN (1971) Pittsburgh
RUPERT E. BILLINGHAM (1972) Dallas	ERNEST JAWETZ (1973) San Francisco	SANFORD H. STONE (1972) Bethesda
BARRY R. BLOOM (1973) New York	LEONHARD KORNGOLD (1973) New York	WILLIAM H. TALIAFERRO (1973) Chicago
DAN H. CAMPBELL (1974) Pasadena	RICHARD M. KRAUSE (1971) New York	DAVID W. TALMAGE (1972) Denver
JOHN J. CEBRA (1973) Baltimore	MAURICE LANDY (1971) Bethesda	IGOR TAMM (1973) New York
ROBERT M. CHANOCK (1971) Bethesda	DONALD M. MARCUS (1972) New York	JONATHAN W. UHR (1973) New York
FRANCIS S. CHEEVER (1971) Pittsburgh	MANFRED M. MAYER (1974) Baltimore	WILTON E. VANNIER (1971) Bethesda
PURNELL W. CHOPPIN (1972) New York	JOHN J. MUNOZ (1971) Hamilton, Montana	JOHN H. VAUGHAN (1972) La Jolla
FRANK J. DIXON (1974) La Jolla	QUENTIN N. MYRVIK (1972) Winston-Salem	WILLIAM O. WEIGLE (1971) La Jolla



The Venom Factor.

Cordis Cobra Venom Factor.
CVF.

A non-toxic anticomplement
for use in experimental animals.

Optimum results can best be demonstrated
when used with the Cordis Complement
Component System.

cordis®

For complete literature on Cobra Venom Factor
and the Cordis Complement Component System,
please write to:

Cordis Laboratories / P.O. Box 428, Dept. L / Miami, Florida 33137

Photographs courtesy of the Miami Serpentarium.

THE JOURNAL OF IMMUNOLOGY[®]

INFORMATION FOR CONTRIBUTORS

Manuscripts should be sent to

Dr. Joseph D. Feldman
Department of Experimental Pathology
Scripps Clinic and Research
Foundation
La Jolla, California 92037

If and when the manuscript is published, it will become the sole property of the journal and all copyright will be taken out in the name of The Williams & Wilkins Company, and all rights in copyright reserved to The Williams & Wilkins Company

Authors will be charged \$58.00 per page for each page exceeding 5 per article.

Reprints must be ordered in advance. A form showing the cost of reprints, together with an order slip, is sent with the galley proof. No more than 1,000 reprints of any article may be purchased. The invoice for reprints will include any charge for excess pages.

INSTRUCTIONS FOR PREPARATION OF MANUSCRIPT

The original and one carbon copy of the manuscript are required. The text and all other material, e.g., footnotes, acknowledgments, and references, must be typed in double space on only one side of 8½" x 11" paper of good quality.

A short title to be used as a running head should be typed alone on the first page. Type the complete title on the second page, and the authors' names and affiliations on the third page. *The format of the Journal must be followed in typing the text and the list of references.* All material to be set in a type size different from that of the text, such as tables, case histories, quotations, formulas, legends for figures and illustrations, foot-

notes, and references must be typed on separate pages. Legends should not be attached to or written on figures or illustrations. The position of tables and figures in the text may be indicated on the page margin.

Manuscripts that do not conform to these specifications may not be accepted, at the Editor's discretion.

Illustrations. Photographs of figures and other illustrative material should be on glossy paper; they must be clearly marked on the reverse with the number, author's name and orientation (top). Graphs should be in black ink on unlined or bluelined paper. If graphs exceed 9" x 12" in size, they must be accompanied by glossy photographic reproductions within that size.

Communications. Short papers may at the author's request be printed in the Communications section of the Journal. These papers must not exceed 3 printed pages in length, including summary, references, tables and figures. If accepted they will appear within 3 months of receipt by the Editor's office. Suitability for publication will be judged on the basis of timeliness, novelty and importance by the usual refereeing procedure. The author must bear the complete cost of publication, at the rate of \$58.00 per page.

Electron micrographs and photomicrographs. The reproduction of these illustrative materials can be improved by using 150-screen half tones and a better grade of paper. The additional cost depends on the number and kind of illustrations and may be as high as \$120.00 for a single page. The cost per page decreases as the number of pages increases. An estimate can be obtained when the manuscript is submitted for publication.

introductory

human antiserum kit \$55.00

2 ml OF EACH

- Anti-Human IgA
- Anti-Human IgG
- Anti-Human IgM
- Anti-Human Immunoglobulins (IgA + IgG + IgM)
- Anti-Human Serum

CONTROLS INCLUDED

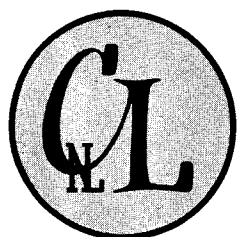
- Human Fraction Rich in IgA (no IgG, no IgM)
- Human Fraction Rich in IgG (no IgA, no IgM)
- Human Fraction Rich in IgM (no IgA, no IgG)
- Human Serum

Complete with Protocols showing Immunelectrophoretic Patterns and Antibody Protein

ALSO AVAILABLE

Antiserums to many other Human and Animal Proteins

Specialists in Fluorescein, Rhodamine, Ferritin and Peroxidase Conjugates.



cappel laboratories, inc.
DOWNINGTOWN, PA. 19335, U.S.A.

phone: (215) 269-0275 (215) 269-0500

THE JOURNAL OF IMMUNOLOGY[®]

Information for Subscribers

Published monthly, beginning January, 1929. (From the 1916-1925, and in 1928 Volumes I-X inclusive, and Vol. XV published bi-monthly.)

The subscription price is \$48.00 per year in U.S.A.; \$51.00 elsewhere. Single copies, when available, are \$5.00 in U.S.A.; \$5.75 elsewhere. The subscriptions of members of the American Association of Immunologists are included in the membership dues and are handled by the Association's Treasurer, Dr. Henry Metzger, American Association of Immunologists, 9650 Rockville Pike, Bethesda, Md. 20014. All other subscriptions should be sent to the publishers.

Change of address: Publisher must be notified 60 days in advance. Journals undeliverable because of incorrect address will be destroyed. Duplicates can be obtained (if available) from the publisher at the regular price of single issues.

New subscriptions and renewals are entered to begin with the issue scheduled for publication 60 days after receipt of the order, unless otherwise requested.

Subscriptions should be renewed promptly: To avoid a break in your series, subscriptions should be renewed promptly. The publishers cannot guarantee to supply back issues on belated renewals.

Back volumes are available in microfilm from University Microfilm, Ann Arbor, Michigan 48106, and Arcata Microfilm Corp., Spring Valley, New York 10977.

Reprints of individual articles are available *only* from authors.

THE WILLIAMS & WILKINS COMPANY

BALTIMORE, MARYLAND 21202 U. S. A.

RESEARCH COMMUNICATIONS
IN

*Chemical Pathology and
Pharmacology*

IMPORTANT JOURNAL

EDITORIAL BOARD

Julian L. Ambrus (*Buffalo*)
William Antopol (*New York*)
Grant H. Barlow (*Chicago*)
Elsa Borriss (*Hannover-Kleefeld*)
Philip B. Bradley (*Birmingham*)
Arvid Carlsson (*Goteborg*)
J. Russel Couch (*College Station*)
Eugene P. Cronkite (*Upton*)
Bertalan Csillik (*Szeged*)
Walter B. Dandliker (*La Jolla*)
R. Domenjoz (*Bonn*)
Stanley Ellis (*Moffett Field*)
Ernst Florey (*Konstanz*)
Karl Folkers (*Austin*)
Kjell Fuxe (*Stockholm*)
Silvio Garattini (*Milan*)
Leonide Goldstein (*Princeton*)
Jack Peter Green (*New York*)
Roger Guillemin (*La Jolla*)
G. H. Hitchings (*Res. Triangle Park*)
Werner Kalow (*Toronto*)
Marian W. Kies (*Bethesda*)
Ernst Klenk (*Cologne*)
Nathan S. Kline (*Orangeburg*)
H. Laborit (*Paris*)
Chauncey D. Leake (*San Francisco*)
Robert McCluskey (*Buffalo*)
Kazuo Okochi (*Tokyo*)
W. Walter Oppelt (*Gainesville*)
Joseph E. Rall (*Bethesda*)
V. Ramalingaswami (*New Delhi*)
Georges Sandor (*Paris*)
D. V. Siva Sankar (*New York*)
N. Sapeika (*Cape Town*)
Morris Schaeffer (*New York*)
Solomon Snyder (*Baltimore*)
Robert F. Steiner (*Baltimore*)
C. Chester Stock (*Rye*)
F. William Sunderman Jr. (*Hartford*)
Alton I. Sutnick (*Philadelphia*)
H. Uehleke (*Tubingen*)
A. V. Valdman (*Leningrad*)
R. Villarino (*Santiago de Compostela*)
Z. Votava (*Praha*)
Bernard M. Wagner (*New York*)
P. G. Waser (*Zurich*)
Stewart Wolf (*Galveston*)

The journal is devoted to alleviation of human suffering from disease and to rapid communication (within 4 to 9 weeks) of original scientific research in the elucidation of mechanisms of pathogenesis of disease and the mechanisms of actions of drugs. Relevant studies in humans, other mammals and lower organisms of plant and animal kingdoms are acceptable. Papers on biochemical and molecular pharmacology, pharmacodynamics and related areas of pharmacognosy and organic and biological syntheses are also accepted.

Clinical drug trials, geographic pathology, medical statistics etc., may be accepted at the discretion of the editors. Analytical techniques and basic research of probable importance to disease and to drug actions will also be accepted. The average manuscript will be about eight pages long, prepared as described above. Occasional manuscripts longer than eight pages and authoritative reviews may also be accepted at the discretion of the editors. Important manuscripts in French and German may also be accepted. Complete manuscripts in TRIPLICATE may be sent to any of the editors or preferably sent directly to the publisher.

The manuscript will begin with an Abstract, followed by Introduction, Materials and Methods, Results, Discussion, Acknowledgements and References. Special attention should be paid to ambiguous abbreviations. Chemical formulae and symbols should be drawn suitably in black ink or typewritten.

References in the body of the manuscript will be cited by name and year of publication. At the end of the paper, these will be arranged alphabetically

The accepted manuscript will be printed by direct photo reproduction for offset printing.

SUBSCRIPTION PRICE:

Eighteen Dollars Per	Single copy
Volume of 6 numbers.	price \$4.00.
Additional foreign	Volume two will
postage \$2.00.	cover 1971.

PUBLISHED BY



P J D Publications Ltd - 10 Oakdale Drive, Westbury, N.Y. 11590