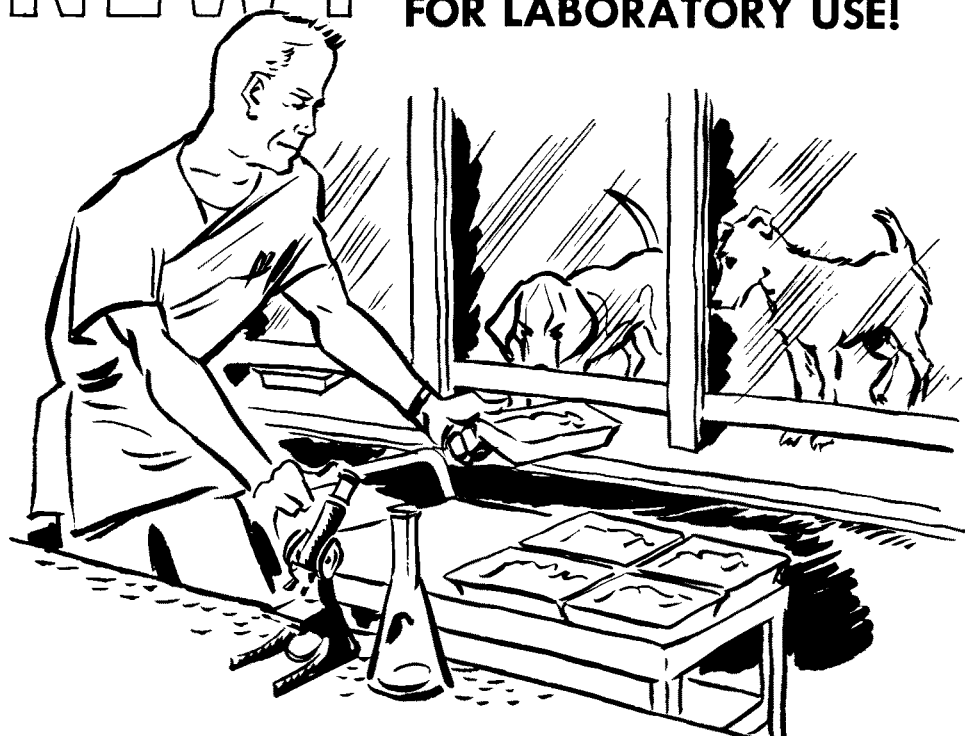


**NEW!**

**A DOG FOOD  
DEVELOPED ESPECIALLY  
FOR LABORATORY USE!**



Not just another dog food, **ROCKLAND DOG DIET** is the first dog diet scientifically compounded to meet the exacting requirements of biological research. Balanced to meet the demands of pre-conditioning, post-operative and convalescing stress. Formulated of components carefully selected to provide uniform high quality, palatability, known composition, and a minimum of variation in nutrient content. **ROCKLAND DOG DIET** provides an adequate dietary regimen of constant and known origin. Built-in palatability helps eliminate wide fluctuations in feed intake or complete inanition. No need to supplement. Feeds dry to save time, effort, money. See your Rockland Dealer and discover how **ROCKLAND DOG DIET** can help contribute to laboratory consistency and efficiency.



other **ROCKLAND** standard reference stock diets:

- ROCKLAND RAT DIET** (complete)
- ROCKLAND RAT DIET** ("D"-Free)
- ROCKLAND RABBIT RATION**

- ROCKLAND MOUSE DIET**
- ROCKLAND MONKEY DIET**
- ROCKLAND GUINEA PIG DIET**

**ROCKLAND** <sup>T.M.</sup>

Laboratory Animal Stock Diets

Products of

**A. E. STALEY MFG. COMPANY • DECATUR, ILLINOIS**

Completeness and excellence  
of presentation. . .

*Wilson and Miles:*  
**TOPLEY & WILSON'S**  
**PRINCIPLES OF BACTERIOLOGY**  
**AND IMMUNITY—4th edition**

"Nine years have elapsed since the publication of the third edition of this book. The main advances during the intervening years have been in the fields of chemotherapy and antibiotic agents. The changes in the text have been mainly along these lines. The general character of the textbook has been altered by greater attention to bacteriology in man and animals and proportionately lessened emphasis on nonmedical bacteriology. Also, the work has become more a textbook for the postgraduate student, teacher, and investigator, being too big for the undergraduate medical student. The references have been brought up to date and their number increased. The general makeup is the same as before: general and systematic bacteriology, infection and resistance, and the application of bacteriology to medicine and hygiene. The text has been enlarged, and the well-organized index is present in both volumes. This is still a book unique in many ways, distinguished by its delightful style, lucidity, and sober common sense, and there is still no better critical introduction to immunology than part 3."—*J.A.M.A.*

"... No other text dealing with bacteriology remotely approaches this one for completeness and the excellence of presentation. All who are interested in bacteriology should have access to this admirable edition."—*Morris L. Rakielen in New York J. Med.*

CONTENTS: I. General Bacteriology. II. Systematic Bacteriology. III. Infection and Resistance. IV. Application of Bacteriology to Medicine and Hygiene.

By G. S. WILSON, M.D., F.R.C.P., D.P.H., *Director of Public Health Laboratory Service, England and Wales;* and A. A. MILES, C.B.E., M.A., M.D., F.R.C.P., *Professor of Experimental Pathology, University of London, and Director of the Lister Institute of Preventive Medicine, London*

1955 • 2 vols., 2446 pp., 303 figs. • \$24.50

*Publishers of Medical and Scientific Books and Periodicals*



**WILLIAMS  
& WILKINS  
COMPANY**

BALTIMORE 2, MD.

**SHOP BY MAIL**

**THE WILLIAMS AND WILKINS COMPANY**  
Baltimore 2, Md.

Please send the following on approval:

\_\_\_\_\_

Name \_\_\_\_\_ (Please print)

Address \_\_\_\_\_

City \_\_\_\_\_ Zone \_\_\_\_\_ State \_\_\_\_\_

Payment enclosed.

Bill me.

Shopping by mail is an easy, time-saving way to select books for your personal library.

*Best & Taylor:* **PHYSIOLOGICAL BASIS OF MEDICAL PRACTICE**  
*6th edition*

"The present edition of this book incorporates the most extensive revision since it was first published nearly two decades ago. Nearly every page has undergone some alteration, deletion, or addition, with many figures redrawn and others added. The 80 chapters supply a wealth of information for practicing physicians, medical students, specialists of every complexion in medical science, and laboratory investigators. Few works are worthy of the term 'indispensable.' This book occupies a commanding position for that appellation."  
—J.A.M.A.

By CHARLES HERBERT BEST, C.B.E., M.A., M.D., Professor and Head of Department of Physiology, University of Toronto; and NORMAN BURKE TAYLOR, V.D., M.D., F.R.S., Professor of History of Medicine and Medical Literature, University of Western Ontario

1955 • 1357 pp., 588 figs. • \$12.00

  
**THE WILLIAMS & WILKINS COMPANY**

BALTIMORE 2, MARYLAND

## "ROCKLAND"

A RELIABLE AND POPULAR

## name brand.

Our laboratory MICE and RATS can now be offered entirely free of *Syphacia obvelata* and *Aspiculuris tetraptera* (Oxyurids).

mouse strains	{	Swiss-Webster	SW
		Rockland all-purpose	RAP
		C-57 Black	C-57BL
		C-57 Brown	C-57BR
rat strains	{	C-57 Leaden	C-57L
		C3H Agouti	C3H
		Sherman	albino
		Long-Evans	hooded

price list on request

## Rockland Farms

NEW CITY (Rockland County)  
NEW YORK

## THE JOURNAL OF IMMUNOLOGY

### Information for Subscribers

Published monthly, beginning January, 1929. (From 1916-1925, and in 1928 Volumes I-X, inclusive, and Vol. XV published bi-monthly.)

The subscription price is \$15.00 per year. For countries outside the U. S., add \$1.50 per year for additional postage, except Canada. Canadian postage: add \$.50 per year. Single copies, when available, are \$2.25, plus \$.25 postage outside U. S. A. The subscriptions of members of the American Association of Immunologists are included in the membership dues and are handled by the Association's Treasurer, Dr. Calderon Howe, Columbia University College of Physicians and Surgeons, New York, N.Y. All other subscriptions should be sent to the publishers.

*Change of address:* Publisher must be notified 60 days in advance. Journals undeliverable because of incorrect address will be destroyed. Duplicates can be obtained (if available) from the publisher at the regular price of single issues.

*New subscriptions and renewals* are entered to begin with the first volume of the year when subscription is received. Should any issue of the current volume be out of print at the time the subscription order is received, the pro-rata value of such numbers will be refunded to the subscriber.

*Subscriptions should be renewed promptly:* To avoid a break in your series, subscriptions should be renewed promptly. The publishers cannot guarantee to supply back issues on belated renewals.

Correspondence concerning all business matters should be addressed to

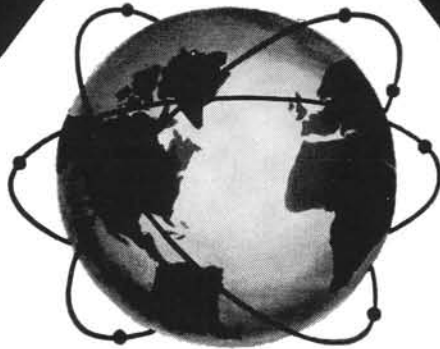
**THE WILLIAMS & WILKINS COMPANY**

*Publishers of Scientific Books and Periodicals*

BALTIMORE 2, MARYLAND, U. S. A.

**WHEN  
THE  
WORLD  
CAME  
INTO A  
FLASK...**

**NBC®**



In this age of missiles, space ships and rockets, it is gratifying to see our biochemicals travel throughout the world. Leading research investigators from all over the globe have come to rely upon our high quality, low prices and speedy service. Our stocks include over 300 Amino Acids • Over 90 Peptides • Over 200 Nucleoproteins, Purines, Pyrimidines • Miscellaneous Biochemicals • Vitamins • Enzymes-Crystalline, Purified • Growth Factors • Steroid Hormones • Biological Salt Mixtures and Test Materials • Carbohydrates • Purified Proteins • Fatty Acids • Antibiotics • Alkaloids • Glandular Substances.

**NUTRITIONAL  
BIOCHEMICALS CORPORATION**

21010 MILES AVENUE • CLEVELAND 28, OHIO



SEND FOR OUR  
FREE JULY, 1960  
CATALOG JI



Containing more than  
2600 items. Fill out coupon and  
mail today for your copy.

NAME \_\_\_\_\_  
ORGANIZATION \_\_\_\_\_  
ADDRESS \_\_\_\_\_  
CITY \_\_\_\_\_  
STATE \_\_\_\_\_ ZONE \_\_\_\_\_