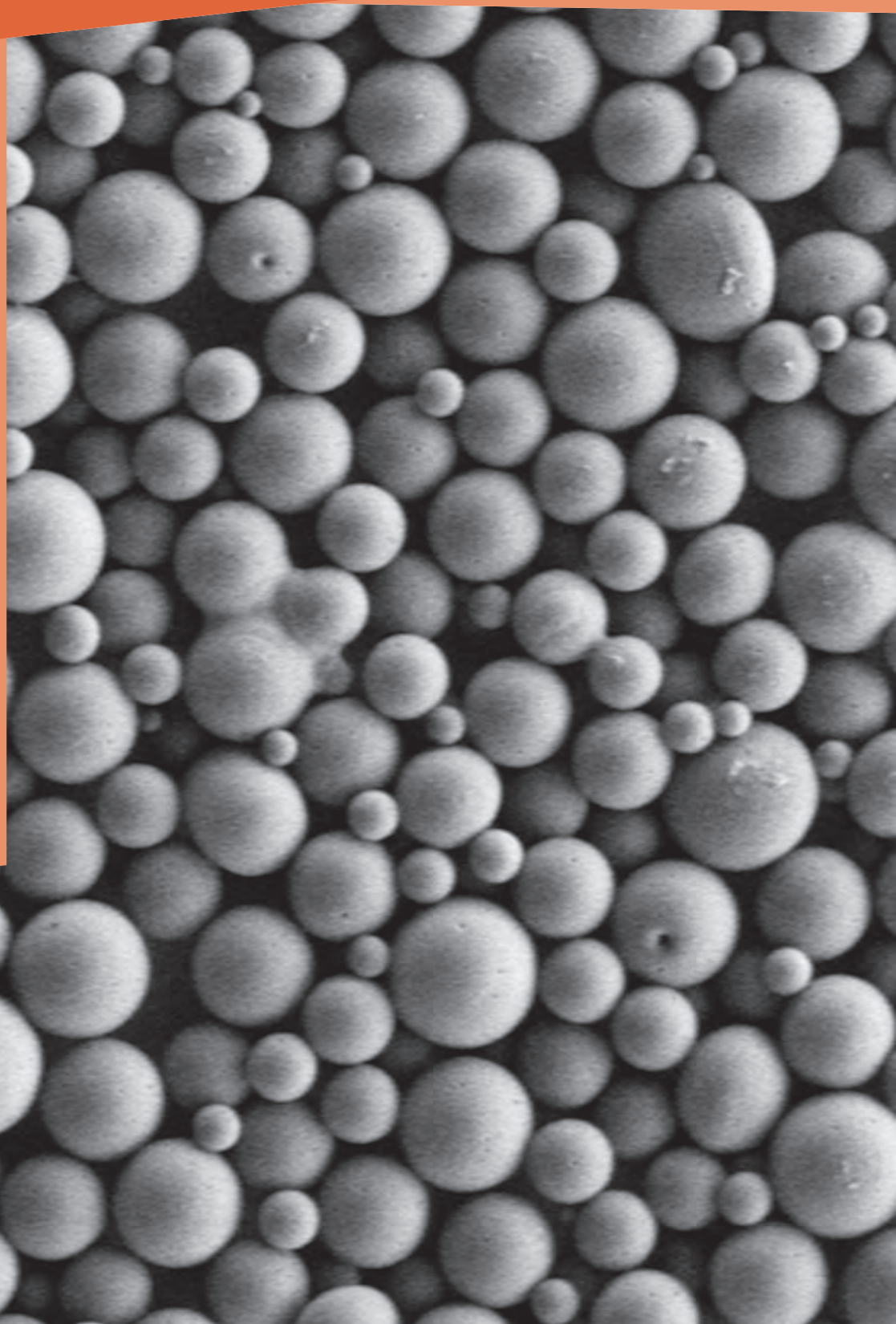


The Journal of Immunology



Volume 201, Issue 4 • 15 August 2018 • www.jimmunol.org

- A Role for BCR Diversification during EAE
- Monocyte-Derived DCs Promote Intratumor CTL Responses
- Calcium Channel Regulators in Autoimmunity
- Peptidylarginine Deiminase 4 in Pneumosepsis
- Immunogenic Peptides from Influenza Negative Strand
- Review: Epigenetic Dysregulation of Lymphocyte Function



AAI Fellowship Program for Career Reentry



Fellowship Overview

This fellowship program provides one year of salary support to postdoctoral fellows who have taken a leave of absence of one year or more due to military obligations, personal or family medical leave, or other related family circumstances. These reasons may include recovering from a serious illness; providing elder or child care; fulfilling a military obligation; or relocating due to a spousal career transition.

Eligibility

- An applicant must have a tentative written offer of appointment as a postdoctoral fellow.
- The fellowship must be in immunology or a related field.

Award consideration is based on a combination of the merit of the research project, quality of the training environment, research and career accomplishments, and career potential.

APPLICATIONS OPEN JUNE 1
APPLICATIONS CLOSE SEPTEMBER 1



For more information or to apply: www.aai.org/Reentry
Direct inquiries to fellowships@aai.org