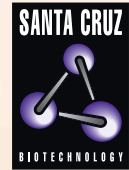


INTRODUCING THE NEW 2009 Research Antibody Catalog



The Power to Question

FROM SANTA CRUZ BIOTECHNOLOGY, INC.



LEADER IN
INNOVATION
AND QUALITY

Leading Worldwide Source for:

- monoclonal and polyclonal antibodies
- siRNA and shRNA (plasmid and lentivirus) products
- gene specific transfected cell lysates
- phospho-specific antibodies
- secondary antibodies and support products

Website updated daily with new antibodies, siRNA/
shRNA products, transfected lysates, support data
and product citations.

www.scbt.com

Headquarters

TOLL FREE: 800.457.3801

TEL: 831.457.3800

FAX: 831.457.3801

E-MAIL: customer@scbt.com

European Support

TOLL FREE: +00800.4573.8000

PHONE: +49.6221.4503.0

FAX: +49.6221.4503.45

E-MAIL: europe@scbt.com

Asian Support

JAPAN TOLL FREE: (010) 800.40402026

S. KOREA TOLL FREE: 00798.1.1.002.0297

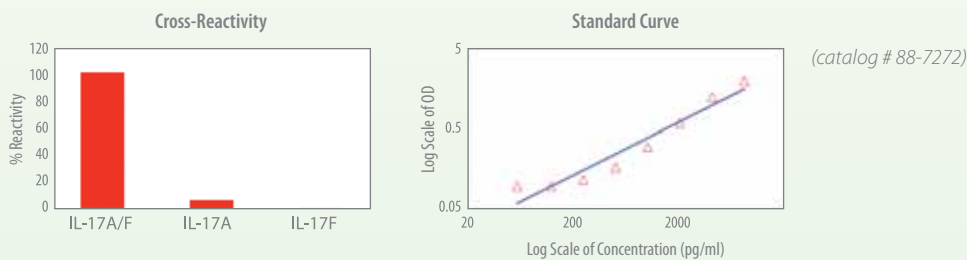
N. CHINA TOLL FREE: 10.800.711.0752

S. CHINA TOLL FREE: 10.800.110.0694

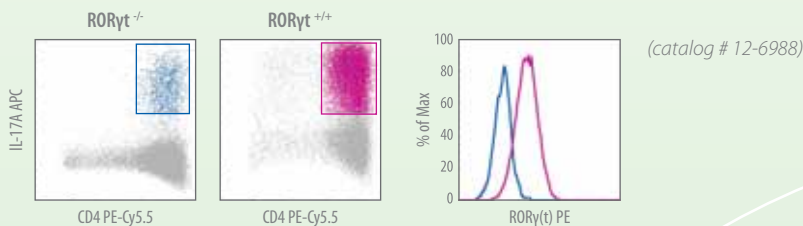
Deciphering the Th17 Cell Lineage

NEW innovative tools for Th17 biology

Introducing the **ONLY** ELISA that detects mouse IL-17A/F heterodimer without interference by IL-17A or IL-17F homodimers.



For the **FIRST** time, identify the Th17 "master regulator" ROR γ (t) by flow cytometry.



Data provided courtesy of D.R. Littman laboratory.



Register online and be first to receive updates on new products and promotions.



Innovate with New Immunoassays and Services

LEGEND MAX™

ELISA Kits with Pre-coated Plates



ELISA MAX™ Sets



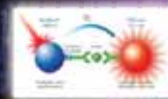
Partner with BioLegend and allow our experts to provide collaborative scientific solutions in a timely, consistent, and reliable manner. With our expertise in cutting edge assay development, immunoassays, sample handling, data analysis, and data management, we can work together to achieve your research goals.

LEGENDplex™

xMAP® Luminex Assay



AlphaLISA®



LEGENDArray™

Bead-based Multiplexing for Flow Cytometry



Sample Testing Services

- xMAP® Luminex Assays
- ELISAs
- AlphaLISA® Assays
 - No wash, homogenous, automatable assay
- Flow Cytometry Bead-based assays

Custom Assay Development

- LEGENDplex™ xMAP® Bead-based Assay
- LEGEND MAX™ ELISA Kits with Pre-coated Plates
- ELISA MAX™ sets
- AlphaLISA® - No wash, homogenous, automatable assay
- LEGENDArray™ Bead-based Multiplexing for Flow Cytometry

Contact us for more details: services@biolegend.com



The path to legendary discovery™

BioLegend Contact Information
Toll-Free at 1.877.246.5343 (877-BIOLEGEND)
International: 1.858.455.9588

www.biolegend.com

WORLD-CLASS QUALITY. SUPERIOR CUSTOMER SUPPORT. OUTSTANDING VALUE.

xMAP® is a trademark of Luminex Corporation. AlphaLISA® is a trademark of PerkinElmer Inc.