

Spot the difference.



Ready to move from one platform to another with complete confidence? Invitrogen's BioSource™ Luminex® Assays are the only ones benchmarked to ELISA and calibrated to NIBSC standards or published intracellular cell models for phosphoprotein activity. We also test standards before and after lyophilization, so you can count on consistent performance. With more than 150 kits to choose from and expert field support ready to work by your side, Invitrogen's Luminex® Instrument and Assays can help deepen your understanding of extracellular and intracellular proteins. See how you can cross over at www.invitrogen.com/luminexassay.

 **invitrogen™**



Proud Sponsor of Immunology 2009
the 96th Annual Meeting of the
American Association of Immunologists

AAI Gala, Sunday, May 10,
Benaroya Concert Hall, Seattle, WA

**AAI Junior
Faculty Travel
Grants**

*Take One Small Step to Legendary Discovery,
Take One Giant Leap with our Easy-to-Use Kits:*

Human Th17 Flow[™] Kit, One-Step Human Treg Flow[™] Kits,
Mouse Regulatory B cell Flow Kit, Mouse T reg Flow[™] Kits,
ELISA MAX[™] Sets: IL-17A, IL-25, IL-32 α , IL-8, IL-21, and more.

Also: Recombinant Proteins for Bioassays, Biofunctional Antibodies,
Multicolor Cocktails, wide selection of fluorochrome options including:
Pacific Blue, Alexa Fluor[®] dyes, PerCP, PerCP/Cy5.5 and more.



BioLegend Contact Information
Toll-Free at 1.877.246.5343 (877-BIOLEGEND)
International: 1.858.455.9588
www.biolegend.com

WORLD-CLASS QUALITY. SUPERIOR CUSTOMER SUPPORT. OUTSTANDING VALUE.



Cytokine Center

Browse our web site with over 1300 proteins, including recombinant cytokines, growth factors, chemokines and neurotrophins. Daily shipping and competitive pricing are offered. Bulk quantities of many proteins available. Cell Sciences also carries corresponding antibodies and cytokine ELISA kits.



PROTEINS

- 4-1BBL
- 4-1BB Receptor
- 6 Ckine
- ACAD8
- ACAT2
- gAcrp30/Adipolean
- Activin A
- Activin B
- ACY1
- ADAT1
- Adiponectin
- ADRP
- AITRL
- Akt1
- Alpha-Feto Protein (AFP)
- Alpha-Galactosidase A
- Angiopoietin-1 (Ang-1)
- Angiopoietin-2 (Ang-2)
- Angiostatin K1-3
- Annexin-V
- apo-SAA
- Apolipoprotein A-1
- Apolipoprotein E2
- Apolipoprotein E3
- Apolipoprotein E4
- APRIL
- Artemin
- ATF2
- Aurora A
- Aurora B
- BAFF
- BAFF Receptor
- BCA-1 / BLC / CXCL13
- BCMA
- BD-1
- BD-2
- BD-3
- BDNF
- Betacellulin
- Bivalirudin
- BMP-2
- BMP-4
- BMP-6
- BMP-7
- BMP-13
- sBMPR-1A
- Brain Natriuretic Protein
- BRAK
- Breast Tumor Antigen
- C5a
- C5L2 Peptide
- C-10
- C-Reactive Protein
- C-Src
- Calbindin D-9K
- Calbindin D-28K
- Calbindin D-29K
- Calmodulin
- Calcitonin Acetate
- Carbonic Anhydrase III
- Carcino-embryonic Antigen
- Cardiotrophin-1
- Caspase-3
- Caspase-6
- CD4
- CD14
- CD22
- CD40 Ligand / TRAP
- CD95 / sFas Ligand
- CD105 / Endoglin
- CHIPS
- CNTF
- Collagen
- CREB
- CTACK / CCL27
- CTGF
- CTGFL / WISP-2
- CTLA-4 / Fc
- CXCL16
- CYR61
- Cytokeratin 8
- DEP-1
- Desmopressin
- Disulfide Oxidoreductase
- E-selectin
- ECGF
- EGF
- Elafin / SKALP
- EMAP-II
- ENA-78 / CXCL5
- Endostatin
- Enteropeptidase
- Eotaxin / CCL11
- Eotaxin-2
- Eotaxin-3 (TSC)
- EPHB2
- EPHB4
- Epigen
- Epiregulin
- Eptifibatide
- Erk-2
- Erythropoietin (EPO)
- Exodus-2
- Fas Ligand
- Fas Receptor
- FGF-1 (acidic)
- FGF-2 (basic)
- FGF-4
- FGF-5
- FGF-6
- FGF-7 / KGF
- FGF-8
- FGF-9
- FGF-10
- FGF-16
- FGF-17
- FGF-18
- FGF-19
- FGF-20
- sFGFR-1 (IIIc) / Fc Chimera
- sFGFR-2 (IIIc) / Fc Chimera
- sFGFR-3 / Fc Chimera
- sFGFR-4 / Fc Chimera
- sFlt-1 (native)
- sFlt-1 (D3)
- sFlt-1 (D4)
- sFlt-1 (D5)
- sFlt-1 (D7)
- Flt3-Ligand
- sFlt-4
- sFlt-4 / Fc Chimera
- Follistatin
- FSH

- Fractalkine / CX3C
- G-CSF
- α-Galactosidase A
- Galectin-1
- Galectin-3
- Gastrointestinal CA
- GCP-2
- GDF-3
- GDF-9
- GDF-11
- GDNF
- GLP-1
- Glucagon
- GM-CSF
- Goserelin
- GPBB
- Granzyme B
- GROα
- GROβ
- GROγ
- GRO/MGSA
- Growth Hormone
- Growth Hormone BP
- GST-p21/WAF-1
- HB-EGF
- HCC-1
- HGF
- Histidyl-tRNA synthetase
- Histrelin
- HRG1-β1
- I-309
- I-TAC
- IFN-α
- IFN-α A
- IFN-α 2a
- IFN-α 2b
- IFN-β
- IFN-γ
- IFN-Omega
- IGF-I
- IGF-II
- proIGF-II
- IGFBP-1
- IGFBP-2
- IGFBP-3
- IGFBP-4
- IGFBP-5
- IGFBP-6
- IGFBP-7
- IL-1α
- IL-1β
- IL-2
- IL-3
- IL-4
- sIL-4 Receptor
- IL-5
- IL-6
- sIL-6 Receptor
- IL-7
- IL-8 (72 a.a.)
- IL-8 (77 a.a.)
- IL-9
- IL-10
- IL-11
- IL-12
- IL-13
- IL-13 analog

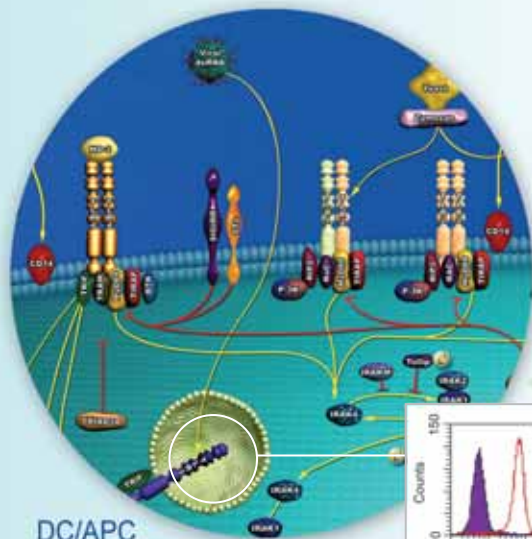
- IL-15
- IL-16 (121 a.a.)
- IL-16 (130 a.a.)
- IL-17
- IL-17B
- IL-17D
- IL-17E
- IL-17F
- IL-19
- IL-20
- IL-21
- IL-22
- IL-31
- Insulin
- IP-10
- JE
- JNK2a1
- JNK2a2
- KC / CXCL1
- KGF
- L-asparaginase
- LAG-1
- LALF Peptide
- LAR-PTP
- LBP
- LC-1
- LD-78β
- LDH
- LEC / NCC-4
- Leptin
- LIGHT
- LIX
- LKM
- LL-37
- Lungkine / CXCL15
- Lymphotactin
- sLYVE-1
- M-CSF
- MCP-1 (MCAF)
- MCP-2
- MCP-3
- MCP-4
- MCP-5
- MDC (67 a.a.)
- MDC (69 a.a.)
- MDH
- MEC
- Mek-1
- MIA
- Midkine
- MIG / CXCL9
- MIP-1α / CCL3
- MIP-1β / CCL4
- MIP-3 / CCL23
- MIP-3α / CCL20
- MIP-3β / CCL19
- MIP-4 (PARC) / CCL18
- MIP-5 / CCL15
- MMP-3
- MMP-7
- MMP-13
- Myostatin
- Nanog
- NAP-2
- Neurturin
- NFAT-1
- β-NGF
- NOGGIN
- NOV
- NP-1
- NT-1/BCSF-3
- NT-3
- NT-4
- Ocreotide
- Oncostatin M
- Osteoprotegerin (OPG)
- OTOR
- Oxytocin
- p38-α
- PAI-1
- Parathyroid Hormone
- PDGF-AA
- PDGF-AB
- PDGF-BB
- PDGF-CC

- Persephin
- PF-4
- PIGF-1
- PIGF-2
- PKA α-subunit
- PKC-α
- PKC-γ
- Pleiotrophin
- PLGF-1
- Polymyxin B (PMB)
- PRAS40
- PRL-1
- PRL-2
- PRL-3
- Prokineticin-2
- Prolactin
- Protirelin
- PTHrP
- PTP1B
- PTP-IA2
- PTP-MEG2
- PTP-PEST
- sRANK
- sRANKL
- RANTES
- LBP
- RELN-α
- LD-78β
- RELN-β
- Resistin
- RPTPβ
- RPTPγ
- RPTPμ
- SCF
- SCGF-α
- SCGF-β
- SDF-1α
- SDF-1β
- Secretin
- SF20
- SHP-2
- STAT1
- c-Src
- TACI
- TARC
- TC-PTP
- TECK
- TFE2
- TGF-α
- TGF-β1
- TGF-β2
- TGF-β3
- Thymosin α1
- sTIE-1/Fc Chimera
- sTIE-2/Fc Chimera
- TL-1A
- TNF-α
- TNF-β
- sTNF-receptor Type I
- sTNF-receptor Type II
- TPO
- sTRAIL R-1 (DR4)
- sTRAIL R-2 (DR5)
- TRAIL/Apo2L
- TSG
- TSH
- TSLP
- TWEAK
- TWEAK Receptor
- Urokinase
- EG-VEGF
- VEGF121
- VEGF145
- VEGF165
- VEGF-C
- VEGF-C 1125
- VEGF-E
- HB-VEGF-E
- sVEGFR-1
- sVEGFR-2
- sVEGFR-3
- Visfatin
- WISP-1
- WISP-2
- WISP-3
- WNT-1

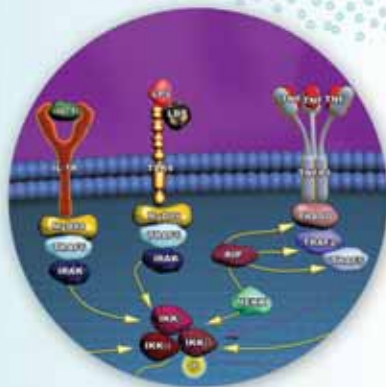
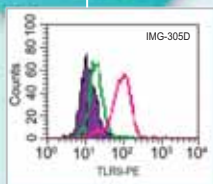
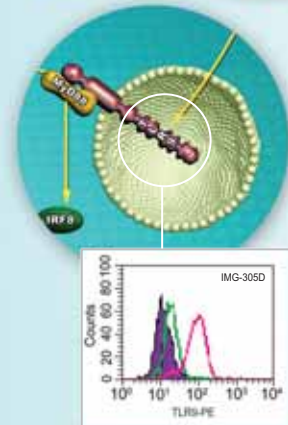
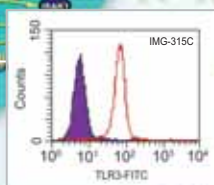


IMGENEX PATHWAY PROFILING

Innate and Adaptive Immune Response

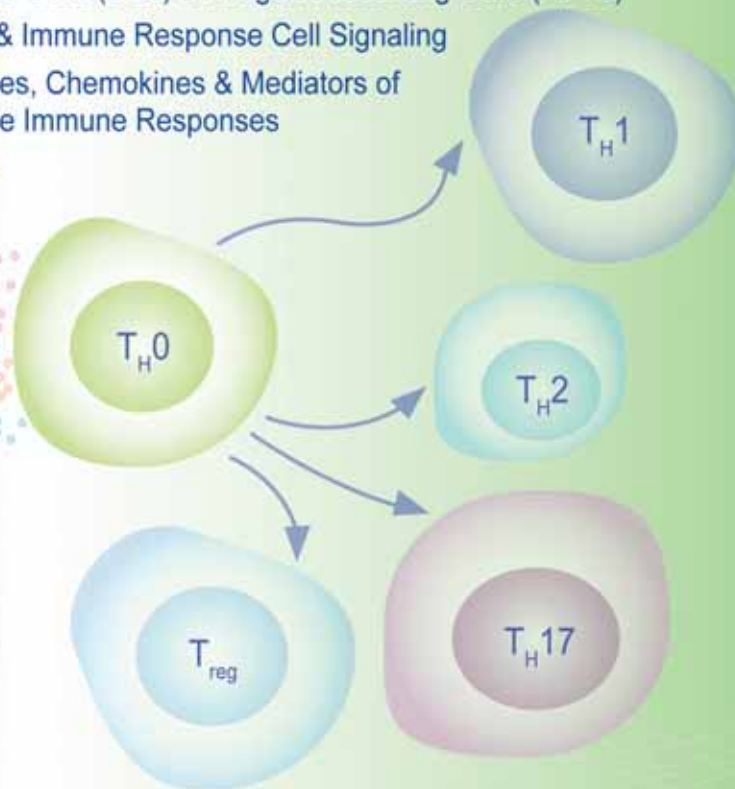


DC/APC



Featured Antibodies and Reagents

- Toll-like Receptors (TLRs), TLR Ligands & Agonists
- Dendritic Cells (DCs) & Antigen-Presenting Cells (APCs)
- NF-κB & Immune Response Cell Signaling
- Cytokines, Chemokines & Mediators of Adaptive Immune Responses
- T Cells



IMGENEX provides breadth, depth and expertise for pathway analysis of Innate Immunity and elicitation of the Adaptive Immune response. Whether you need to stimulate, detect, inhibit, or assess—using flow cytometry, immunohistochemistry, western blotting or other platforms, count on IMGENEX for application validated products. Visit IMGENEX at www.imgenex.com/tr

Research Tools

- Antibodies
- Agonists **New!**
- Peptide Inhibitors
- Lysates
- ELISAs
- Staining Kits
- RNAi Kits

TLRs & Associated Proteins

- TLRs 1-13
- Phospho TLRs
- MD-2
- NOD1
- NOD2
- NALP1
- NALP2
- Caspase-1
- MyD88
- TRIF/TICAM
- TIRAP/Mal
- IRAK4
- TBK1/NAK
- A20
- TRAF6
- IKKα
- IκBα
- p65

TLR Agonists

- Pam3CSK4
- Poly(I).Poly(C)
- LPS
- Flagellin
- MALP-2
- Imiquimod
- CpG ODN

Dendritic Cells

- pDC/IPC
- Langerin/CD207
- BDCA-2/CD303
- DC-SIGN/CD209
- Neuropilin/BDCA-4
- ASGPR/CD301
- DC-SIGN/CD209
- DCIR
- DC-LAMP

Regulatory T Cell Reagents

- FOXP3Δ2 [exon2 deleted] **New!**
- FOXP3
- GPR83
- Folate Receptor 4/FR4
- CD127/IL7R
- INKT
- GITR
- CD4
- CD25
- Neuropilin/BDCA-4

HUMAN HEALTH

ENVIRONMENTAL HEALTH

READY-TO-
SCREEN
FROZEN CELLS.
Thaw and use.

AEQUORIN
PARENTAL
CELL LINES AND
PLASMIDS.
Make your own.

MEMBRANE
PREPARATIONS.
Deliver consistent
performance.

VALIDATED
GPCR
CELL LINES.
Trust your results.

GPCR CELL LINES. ON THE FRONT LINE OF DISCOVERY.

© 2009 PerkinElmer, Inc. 400168_01. All trademarks or registered trademarks are the property of PerkinElmer, Inc. and/or its subsidiaries.



Advance your research with our validated cell lines. You can choose from recombinant or parental cell lines for functional and radioligand binding assays, as well as membrane preparations or frozen ready-to-use cells. PerkinElmer offers you a wide selection of licensed, high-quality cell lines – validated for calcium flux, cAMP, inositol phosphate, GTP γ S and other applications. Find out how our scientific expertise can help you stay at the head of the line.

www.perkinelmer.com/GPCRcomplete


PerkinElmer[®]
For the Better

BD Influx cell sorter

Flow cytometry that adapts to your way of thinking



Helping all people
live healthy lives

A configurable and flexible fit for your site and application needs

Unique discoveries demand an open mind—and a platform that adapts easily to your requirements. The BD Influx™ cell sorter offers a powerful combination of detection capability, sorting performance, and hands-on control. This compact instrument has big potential, offering 5 laser ports, replaceable nozzle assemblies, and quick-exchange fluidics with gamma-irradiated tubing.

An optional HEPA-filtered enclosure is available.

The BD Influx cell sorter is tailor-made to thrive on routine tasks or emerging new applications. As always, a full array of BD technical and application support is standard. Contact your BD representative or visit bdbiosciences.com/influx to learn more.

Class I (1) Laser product.
This product is for Research Use Only. Not for use in diagnostic or therapeutic procedures.
BD, BD Logo and all other trademarks are property of Becton, Dickinson and Company. © 2008 BD
23-10362-00

BD Biosciences
2350 Qume Drive
San Jose, CA 95131
bdbiosciences.com