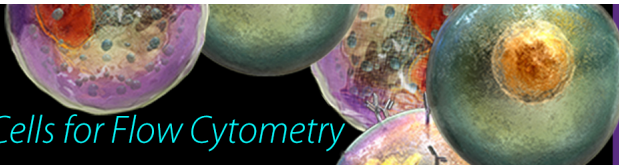


Veri-Cells™

Verified Lyophilized Control Cells for Flow Cytometry



The Journal of
Immunology

116 (6)

J Immunol 1976; 116:1507-1760; ;
<http://www.jimmunol.org/content/116/6.citation>

This information is current as
of July 16, 2018.

Why *The JI*? [Submit online.](#)

- **Rapid Reviews! 30 days*** from submission to initial decision
- **No Triage!** Every submission reviewed by practicing scientists
- **Fast Publication!** 4 weeks from acceptance to publication

**average*

Subscription Information about subscribing to *The Journal of Immunology* is online at:
<http://jimmunol.org/subscription>

Permissions Submit copyright permission requests at:
<http://www.aai.org/About/Publications/JI/copyright.html>

Email Alerts Receive free email-alerts when new articles cite this article. Sign up at:
<http://jimmunol.org/alerts>

The Journal of Immunology is published twice each month by
The American Association of Immunologists, Inc.,
1451 Rockville Pike, Suite 650, Rockville, MD 20852
All rights reserved.
Print ISSN: 0022-1767 Online ISSN: 1550-6606.



THE JOURNAL OF IMMUNOLOGY®

Contents for June

CELLULAR IMMUNOLOGY

Evolution of the Lymphoid System. I. Evidence for Lymphocyte Heterogeneity in Rainbow Trout Revealed by the Organ Distribution of Mitogenic Responses. HOWARD M. ETLINGER, HAROLD O. HODGINS, AND JACQUES M. CHILLER	1547
Macrophage Requirement for the <i>in Vitro</i> Response to TNP Ficoll: A Thymic Independent Antigen. THOMAS M. CHUSED, STUART S. KASSAN, AND DONALD E. MOSIER	1579
The Formation of Septate-Like Junctional Complexes between Lymphoid Cells <i>in Vitro</i> . JOHN A. MCINTYRE, CARL W. PIERCE, AND MORRIS J. KARNOVSKY	1582
Effects of BCG on Lymphocyte Trapping. MARION M. ZATZ	1587
Differentiation of Lymphoid Cells: B Cell as a Direct Target and T Cell as a Regulator in Lipopolysaccharide-Enhanced Induction of Immunoglobulin Production. NOBUKATA SHINOHARA AND MILTON KERN	1607
Specific Suppression of the Immune Response by HGG Tolerant Spleen Cells. I. Parameters Affecting the Level of Suppression. MICHAEL V. DOYLE, D. ELLIOT PARKS, AND WILLIAM O. WEIGLE	1640
The Inhibition of Cutaneous Basophil Hypersensitivity Reactions by a Heterologous Anti-guinea Pig T Cell Serum. MIGUEL J. STADECKER AND SIDNEY LESKOWITZ	1646
Anti-immunoglobulin Stimulation of Murine Lymphocytes. I. Age Dependency of the Proliferative Response. HOWARD L. WEINER, JOHN W. MOORHEAD, AND HENRY N. CLAMAN	1656
B Lymphocyte Differentiation Induced by Lipopolysaccharide. III. Suppression of B Cell Maturation by Anti-mouse Immunoglobulin Antibodies. JOHN F. KEARNEY, MAX D. COOPER, AND ALEXANDER R. LAWTON	1664
Transfer of Hypogammaglobulinemia in Two Inbred Chicken Strains by Spleen Cells from Bursectomized Donors. M. A. PALLADINO, S. P. LERMAN, AND G. J. THORBECKE	1673
Suppression of Reaginic Antibody Formation. III. Relationship between Immunogenicity and Tolerogenicity of Hapten-Carrier Conjugates. WENG Y. LEE AND ALEC H. SEHON	1711

CLINICAL IMMUNOLOGY

The Effect of Corticosteroids on Human IgG Synthesis. R. McMILLAN, R. LONGMIRE, AND R. YELENOSKY	1592
Release of Slow Reacting Substance of Anaphylaxis (SRS-A) from Human Leukocytes by the Calcium Ionophore A23187. MARY CAROL CONROY, ROBERT P. ORANGE, AND LAWRENCE M. LICHTENSTEIN	1677
Human Lymphocyte Subpopulations: Giant SRBC Rosettes. DAVID TAK YAN YU	1719

IMMUNOCHEMISTRY

Radiolabeling of Immunoglobulin without Loss of Antibody Activity: Use of ¹⁴ C-Phenylisothiocyanate with Human Cytotoxic Antibody. NELSON L. LEVY AND JEFFREY R. DAWSON	1526
Blocking of Certain Antigenic Sites in the F(ab) Region by Combination of Univalent Fragments of Rh Antibodies with Red Cell Antigens. H. G. KUNKEL, F. JOSLIN, AND J. HURLEY	1532
Idiotypic Specificities of Anti-Rh Antibodies. J. B. NATVIG, H. G. KUNKEL, R. E. ROSENFELD, J. F. DALTON, AND S. KOCHWA	1536
Enzyme-Linked Immunoassay: Conjugation of the Fab' Fragment of Rabbit IgG with β -D-Galactosidase from <i>E. coli</i> and Its Use for Immunoassay. KANEFUSA KATO, HIDEO FUKU, YOSHITAKA HAMAGUCHI, AND ELJI ISHIKAWA	1554
Identification of Heavy Chain Tyrosine 33 in the Binding Site of Myeloma Protein McPC 603 by Paired Label Iodination. ALLAN L. GROSSBERG, OLIVER A. ROHOLT, AND DAVID PRESSMAN	1596
Antibodies to the Triplet Codons AAA, AAC, and AUG: Reactions with Nucleic Acids. ROSE D'ALISA AND BERNARD F. ERLANGER	1629
Purification of Homogeneous Murine Immunoglobulins with Anti-fructofuranan Specificity. MARK VRANA, JELKA TOMASIC, AND CORNELIS P. J. GLAUDEMANS	1662
Studies on the Antigenic Determinants of the Thy-1.2 Alloantigen as Expressed by the Murine Lymphoblastoid Line S-49.1 TB-2-3. BRIAN J. JOHNSON, UMBERTO N. KUCICH, AND ANTHONY T. MAURELLI	1669
Structural Features and Biologic Properties of Fragments Obtained by Limited Proteolysis of C3. MARY CAROL CONROY, JURIS OZOLS, AND IRWIN H. LEPOW	1682

IMMUNOGENETICS AND TRANSPLANTATION

Continuously Proliferating T Killer Cells Specific for H-2 ^b Targets: Selection and Characterization. GUNTHER DENNERT AND MARGARET DEROSE	1601
Graft- <i>vs</i> -Host Reactions in F ₁ Mice Induced by Parental Lymphoid Cells: Nature of Recruited F ₁ Cells. T. J. ROMANO, N. M. PONZIO, AND G. J. THORBECKE	1618
Specific Selection of Cytotoxic Effector Cells: The Generation of Cytotoxic T Cells in Rat Thoracic Duct Lymphocyte Populations Positively or Negatively Selected for Reactivity to Specific Strong Histocompatibility Alloantigens. DARCY B. WILSON, ANN MARSHAK, GIULIANA RAZZINO-PIERSON, AND JONATHAN C. HOWARD	1624

Suppression of Antibody Responses in Allogeneic Mice by Products of Lymphoid Tissue. I. Allogeneic Suppressive Factor (ASF) from Spleens Repopulated with Thymus Cells. DONNA YONKOSKY, RITA F. BUFFETT, AND MICHAEL BENNETT	1688
Suppression of Antibody Responses in Allogeneic Mice by Products of Lymphoid Tissue. II. Lack of Antigenic Specificity and Immunogenetic Requirements of Allogeneic Suppressive Factor (ASF). DONNA YONKOSKY, RITA F. BUFFETT AND MICHAEL BENNETT	1695
The Merrit Alloantigenic System of Human B Lymphocytes: Evidence for Thirteen Possible Factors Including One Six-Member Segregant Series. ROY L. WALFORD, THOMAS GOSSETT, G. M. TROUP, RICHARD A. GATTI, KAY K. MITTAL, A. ROBINS, G. B. FERRARA, AND EDITH ZELLER	1704

IMMUNOPATHOLOGY

Structural Requirements for Arthritogenicity of Peptidoglycans from <i>Staphylococcus aureus</i> and <i>Lactobacillus plantarum</i> and Analogous Synthetic Compounds. OSAMU KOHASHI, CARL M. PEARSON, YOSHIRO WATANABE, SHOZO KOTANI, AND TOSHITAKA KOGA	1635
---	------

TUMOR IMMUNOLOGY

<i>In Vivo</i> Protection against Syngeneic Gross Virus-Induced Lymphoma in Rats: Comparison with <i>in Vitro</i> Studies of Cell-Mediated Immunity. MOSHE GLASER, DAVID H. LAVRIN, AND RONALD B. HERBERMAN	1507
Augmentation of Cell-Mediated Cytotoxicity Against Syngeneic Gross Virus-Induced Lymphoma in Rats by Phytohemagglutinin and Endotoxin. MOSHE GLASER, JULIE Y. DJEU, HOLGER KIRCHNER, AND RONALD B. HERBERMAN	1512
Defining the Heterogeneity of Anti-tumor Antibody Responses. GARY P. SEGAL AND NORMAN R. KLINMAN	1539
Heterologous Sera: A Target for <i>in Vitro</i> Cell-Mediated Cytotoxicity. GUIDO FORNI AND IRA GREEN	1561
Receptors for Immune Complexes on Cells within a Non-lymphoid Murine Tumor. GARY R. BRASLAWSKY, MARGALITH YAACKUBOWICZ, ASHER FRENSDORFF, AND ISAAC P. WITZ	1571

VIRAL AND MICROBIAL IMMUNOLOGY

Cell-Mediated Immune Response to Herpes Simplex Virus: Type-Specific Lymphoproliferative Responses in Lymph Nodes Draining the Site of Primary Infection. ROBERT P. JACOBS, LAURE AURELIAN, AND GERALD A. COLE	1520
The Development by Cytomegalovirus-Infected Cells of Binding Affinity for Normal Human Immunoglobulin. DIANA WESTMORELAND, STEPHEN ST. JEOR, AND FRED RAPP	1566
Neonatal Infection with Mouse Thymic Virus: Effects on Cells Regulating the Antibody Response to Type III Pneumococcal Polysaccharide. HERBERT C. MORSE III, SUE S. CROSS, AND PHILLIP J. BAKER	1613
Influence of Colony Type on Susceptibility of Gonococci to Killing by Human Serum. J. ALLEN MCCUTCHAN, SHARON LEVINE, AND ABRAHAM I. BRAUDE	1652

COMMUNICATIONS

The Humoral Response of Mouse Spleen Cells to Two Types of Sheep Erythrocytes. IV. The <i>in vivo</i> Response to H and L SRBC and the Genetic Control of the Production of IgM and IgG Antibodies in Disesiminator Mice. MARGARET M. MCCARTHY, CECILE BOWMAN, ALISON BUTLER, AND RICHARD W. DUTTON	1725
Abstracts of Papers Presented at the Sixth International Complement Workshop, Sarasota, Florida, November 23-25, 1975	1727
ERRATUM	1760
AUTHOR INDEX	1761
SUBJECT INDEX	1765
LETTERS TO THE EDITOR	1756