

Fit as a fiddle, Charles River mice are the fittest available. Available worldwide too, in a variety of strains.

For instance at Charles River France and here in Wilmington, our CD[®]-1 outbred and four inbred strains, C3H, DBA, C57BL/6, and the BALB/c. Murine virus defined and COBS[®]. Germfree strains can also be had from both of these locations. And at locations in Canada, England and Italy, CD-1 outbreds are ready and waiting.

For the research institution with work in progress in a number of different spots, this bit of geography helps solve problems. We can deliver similar strains wherever you work, with no real work at all.

What we deliver is up to you. There are timed and untimed pregnant mice. Lactating mice with litter. Even litter mates. All products of a quarter century of breeding experience and the largest selling mice worldwide.

So when you require mice for your research, give our strains a try. Write or call (617) 658-3333. We'll deliver the fittest the fastest. We don't fiddle at all.

Charles River
BREEDING LABORATORIES, INC.
WILMINGTON, MASSACHUSETTS 01887



Fit to be tried.

New Phadebas[®] IgE Test

makes IgE testing simpler, faster and more convenient than ever before possible

IgE

Radioimmunoassay

based on the solid phase Sephadex[®] principle

Complete reagents

sufficient for 50 determinations

Fast results

overnight incubation at room temperature

Wide range

measures serum levels 10 to 4000 U/ml

Pharmacia Laboratories Inc.

800 Centennial Avenue, Piscataway, New Jersey 08854

Please send me further information on the following Phadebas tests

B₁₂ IgE Insulin Amylase

Name and Title

Affiliation

Address

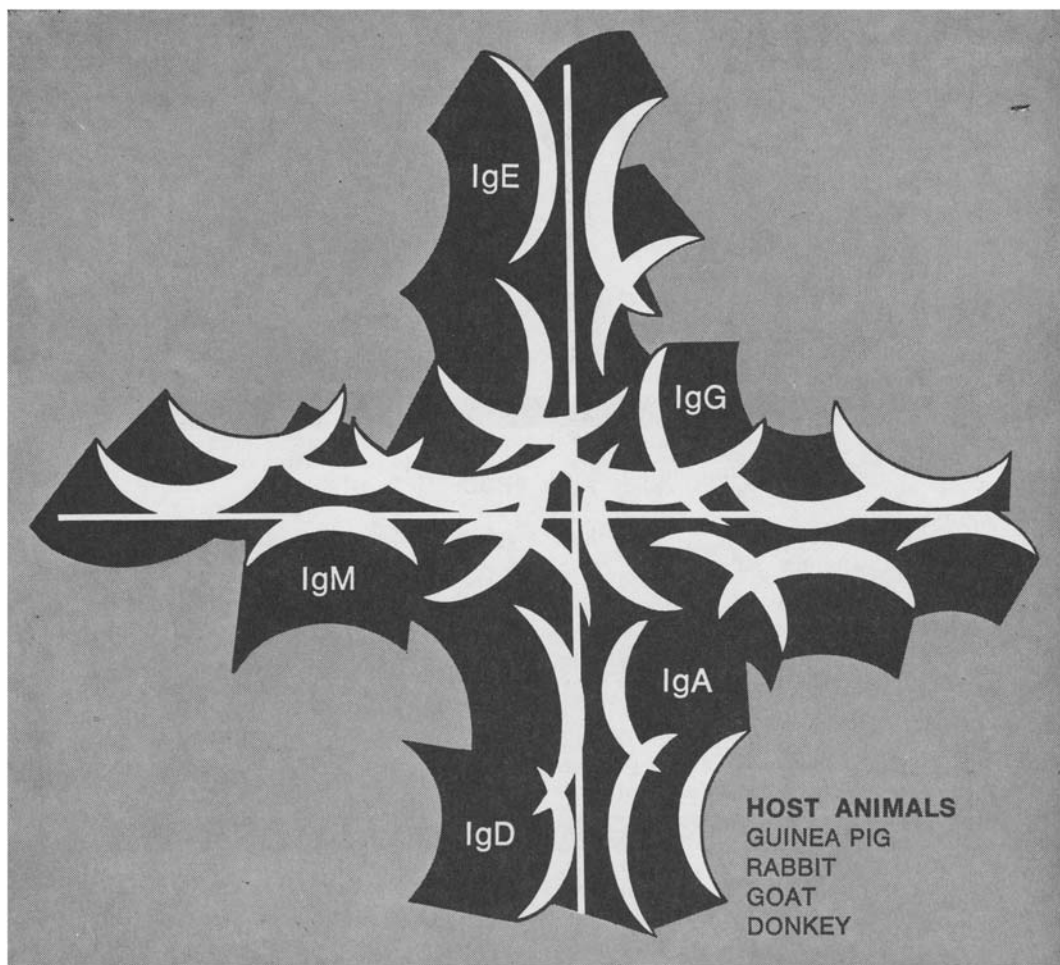
City

State

Zip

PHARMACIA LABORATORIES INC.
800 Centennial Avenue,
Piscataway, N.J. 08854
Pharmacia (Canada) Ltd.,
110 Place Crémazie,
Suite 412, Montreal 351, P.Q.

 Pharmacia



immunochemicals

RESEARCH  PRODUCTS

RESEARCH DIVISION
MILES LABORATORIES, INC.
P.O. Box 272
Kankakee, Illinois 60901 U.S.A.

IN EASTERN HEMISPHERE:
MILES SERAVAC PTY. LTD.
HOLYPORT, BERKSHIRE, ENGLAND

IN ISRAEL:
MILES YEDA LTD.
REHOVOT, ISRAEL

**we've
got more
to sell...**

since we are a basic manufacturer of over 350 immunochemicals, including antisera, produced by using highly purified antigens. These antisera are supplied to you undiluted at the highest possible titer. All Miles-Yeda and Pentex products are shipped rapidly from stock, complete with Chemical Credentials. Very competitive prices for research or bulk quantities of—monospecific antisera to human proteins and IgG fractions thereof • antisera to animal proteins, fractions, haptens • anti-insulin serum • KATI • immunosorbents • Agarose • kits • etc., etc. Accessory items—immunochemical light and dark field viewer.

For complete information, write for our latest catalog.

NEW ECONOMICAL SIZE!

LYOPHILIZED, SPECIALLY PROCESSED, STABLE

20 ml Anti-Human IgA	\$80.00
20 ml Anti-Human IgG	\$80.00
20 ml Anti-Human IgM	\$80.00
20 ml Anti-Human Immunoglobulins	\$80.00
(IgA+IgG+IgM)	
20 ml Anti-Human Serum	\$80.00

PROTOCOLS INCLUDED

20 ml FLUORESCIEIN CONJUGATES OF ABOVE \$140.00

ALSO AVAILABLE

OTHER CAPPEL ANTISERUM IN 20 ml ECONOMICAL SIZE

Specialists in Fluorescein, Rhodamine, Ferritin and Peroxidase Conjugations.



cappel laboratories, inc.

DOWNINGTOWN, PA. 19335, U.S.A.

phone: (215) 269-0275 (215) 269-0500

Packard auto-gamma®

The finest systems
for counting gamma isotopes
quickly and precisely.

FEATURES INCLUDE: High sample capacity: 100- 200- 300-sample systems Controlled-temperature for stability and reproducibility Data processing capability Single- and dual-isotope counting

APPLICATIONS: Radioimmunoassay techniques Hormone determinations Endocrine analysis Cancer antigen blood tests Hepatitis screening Thyroid-function, other radio-pharmaceutical kits

There is a Packard Auto-Gamma System with exactly the features and the sample handling capacity to match your particular gamma counting needs.

Manual systems also available. *All Packard instruments are available on a leasing or rental plan.*

Write for complete information — request Bulletin GAM-1.



PACKARD auto-gamma

Packard

PACKARD INSTRUMENT COMPANY, INC. • 2200 WARRENVILLE RD. • DOWNERS GROVE, ILL. 60515
PACKARD INSTRUMENT INTERNATIONAL S. A. • TALSTRASSE 39 • 8001 ZURICH, SWITZERLAND
SUBSIDIARIES OF AMBAC INDUSTRIES, INC.

For the finest in immunochemicals



KALLESTAD
LABORATORIES INCORPORATED
MINNEAPOLIS MINNESOTA 55416

Let's talk it over . . .

(800) 328-4349 . . . toll free

THE JOURNAL OF IMMUNOLOGY[®]

Information for Subscribers

Published monthly, beginning January, 1929. (From the 1916-1925, and in 1928 Volumes I-X inclusive, and Vol. XV published bi-monthly.)

The subscription price is \$48.00 per year in U.S.A.; \$51.00 elsewhere. Single copies, when available, are \$5.00 in U.S.A.; \$5.25 elsewhere. The subscriptions of members of the American Association of Immunologists are included in the membership dues and are handled by the Association's Treasurer, Dr. Henry Metzger, American Association of Immunologists, 9650 Rockville Pike, Bethesda, Md. 20014. All other subscriptions should be sent to the publishers.

Change of address: Publisher must be notified 60 days in advance. Journals undeliverable because of incorrect address will be destroyed. Duplicates can be obtained (if available) from the publisher at the regular price of single issues.

New subscriptions and renewals are entered to begin with the issue scheduled for publication 60 days after receipt of the order, unless otherwise requested.

Subscriptions should be renewed promptly: To avoid a break in your series, subscriptions should be renewed promptly. The publishers cannot guarantee to supply back issues on belated renewals.

Microfilm. For availability, inquire of The Williams & Wilkins Company.

Reprints of individual articles are available *only* from authors.

THE WILLIAMS & WILKINS COMPANY

BALTIMORE, MARYLAND 21202 U. S. A.

Eliminate 90% of the manual effort in RIA. Our automated pipetting system does it.



When you do radioimmunoassays, manual micro pipetting is 90% of the work. That's where our Micromedic Automated Pipetting Station comes in. This is a system designed to automate precision analytical work that requires repetitive dilutions and reagent additions, including work in the ultramicro range.

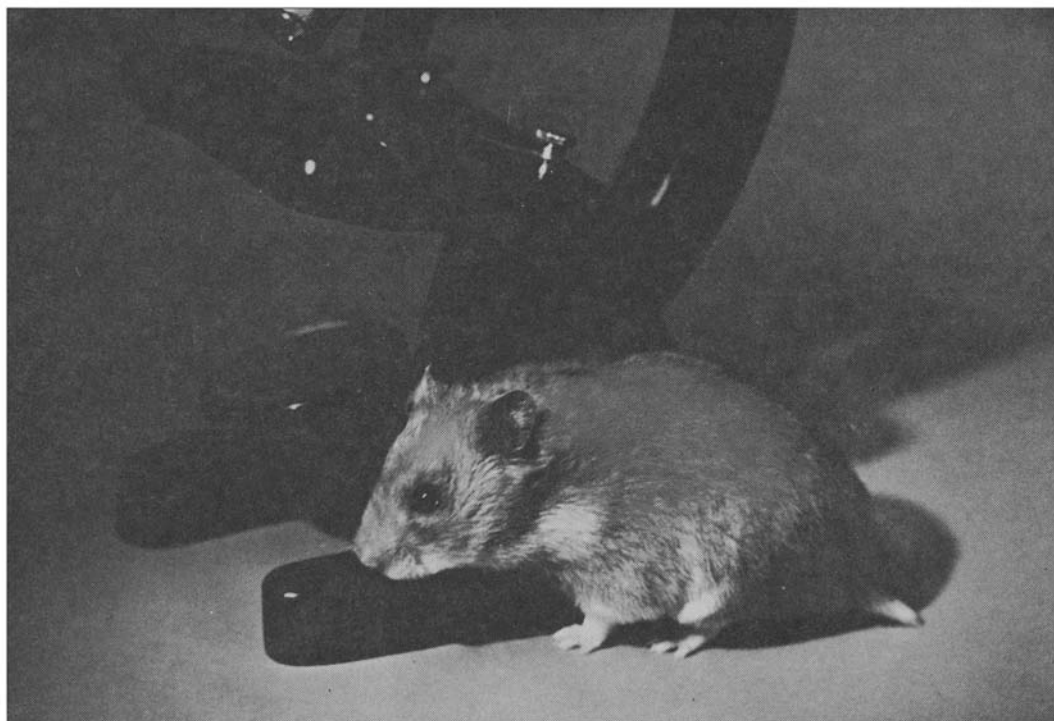
To get fast, reproducible pipetting—automatically—contact Micromedic Systems. We'll show you how. Call (215) 592-2401.



MICROMEDIC SYSTEMS, INC.,
Rohm and Haas Bldg., Phila., Pa. 19105

- Send descriptive literature.
- Have your representative call. Tel. _____

Name _____	Title _____
Organization _____	
Street _____	
City _____	State _____ Zip _____



**The first commercially available
isolator-derived
HAMSTER**

**is proudly announced by the leader in white rats
and other gnotobiotic laboratory animals.**

Through a process of treatment, caesarean section, foster suckling and isolator rearing a clean hamster has been produced. The unique characteristics of the golden hamster make this animal exceptionally well suited and valuable for certain types of biomedical research. Among such uses are: tumor growth in the cheek pouch, both homografts

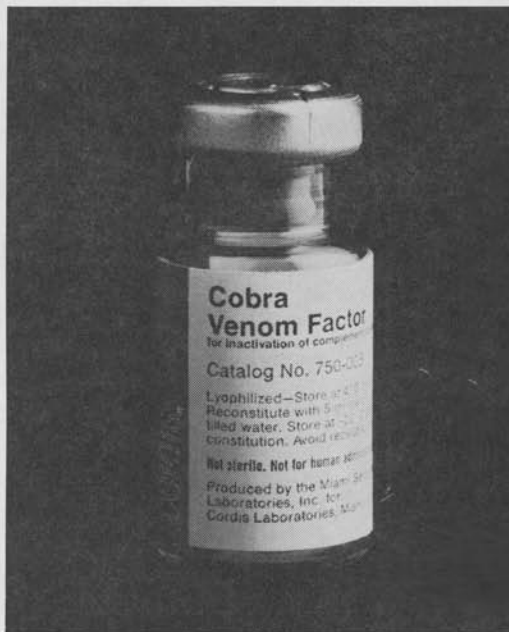
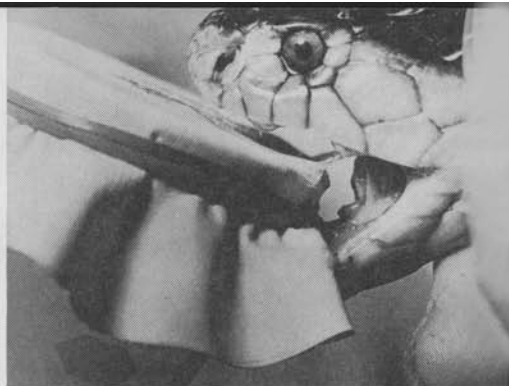
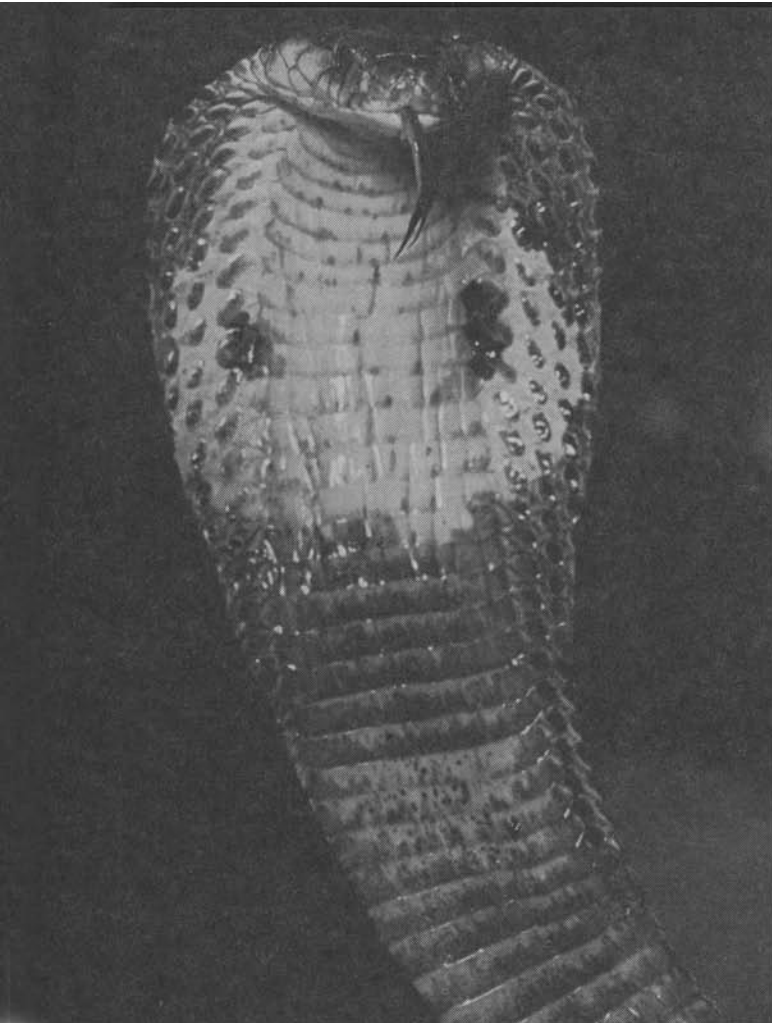
and heterografts; tissue transplantation, dental caries, studies in virology and bacteriology, aging, hibernation, cardiovascular research, pharmacology and nutritional studies.

Call or write for more details on availability and prices of this important addition to the ARS/Sprague-Dawley line of top quality laboratory animals.

**ARS SPRAGUE
DAWLEY**

laboratory animal division of the Mogul Corp.

P. O. Box 4220, Madison, Wisconsin 53711 • Telephone: (608) 221-2211



The Venom Factor.

Cordis Cobra Venom Factor.
CVF.

A non-toxic anticomplement
for use in experimental animals.

Optimum results can best be demonstrated
when used with the Cordis Complement
Component System.

cordis.

For complete literature on Cobra Venom Factor
and the Cordis Complement Component System,
please write to:

Cordis Laboratories / P.O. Box 428, Dept. L / Miami, Florida 33137

Photographs courtesy of the Miami Serpentarium.

CNBr-activated Sepharose[®] 4B

ready for use in affinity chromatography

CNBr-activated Sepharose is the material of choice for the preparation of biospecific adsorbents for affinity chromatography and for enzyme immobilization. Its use in the study of proteins, nucleic acids, polysaccharides etc. is already well documented. Sepharose provides a matrix which is stable, has a high capacity even for large molecules and displays very low non-specific adsorption.

Pharmacia Fine Chemicals is now introducing CNBr-activated Sepharose 4 B, a ready activated matrix to which proteins and other molecules containing primary amino groups may be coupled directly. The preparation is quick, easy and safe. The coupling procedure is particularly gentle and preserves the binding activity of sensitive ligands.

Freeze-dried CNBr-activated Sepharose 4B is available in packs of 15 g corresponding to a gel volume of 50 ml.

Con A-Sepharose[®]

Con A-Sepharose provides new possibilities in cell biology and biochemistry for the isolation of glycoproteins and carbohydrates by affinity chromatography. Concanavalin A has been coupled to Sepharose 4 B by the CNBr method and reacts specifically with terminal D-mannose-like residues.

Con A-Sepharose is available in packs containing 100 ml sedimented gel, 800 mg bound concanavalin A.

Con A

Concanavalin A from Pharmacia Fine Chemicals is prepared by affinity chromatography on Sephadex[®]. It is supplied as pure, freeze-dried protein containing less than 0.3% salt and less than 0.1% carbohydrate in packs of 500 mg at an advantageous price.